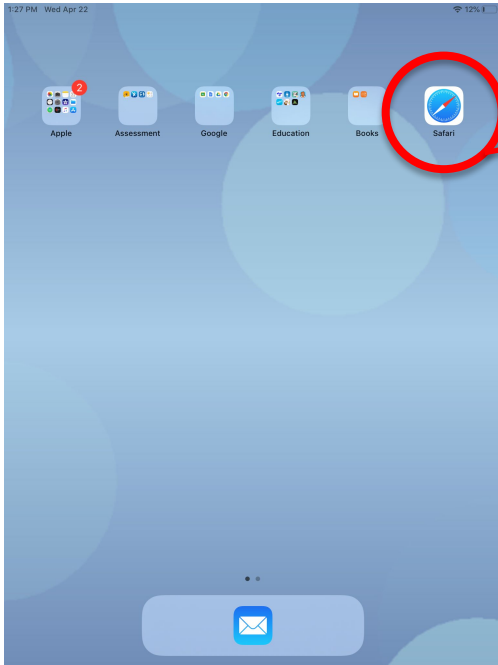
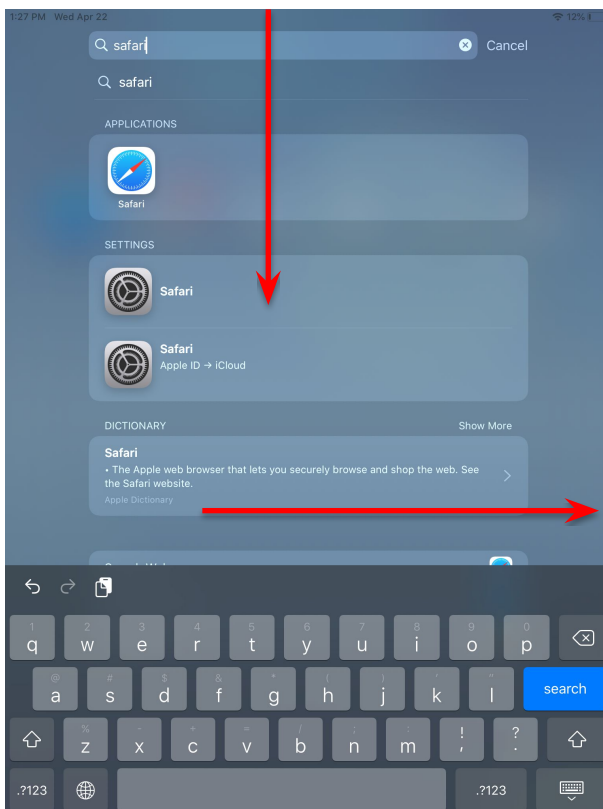


Connect to the server by doing a search in Safari

(Updated 9-4-20)

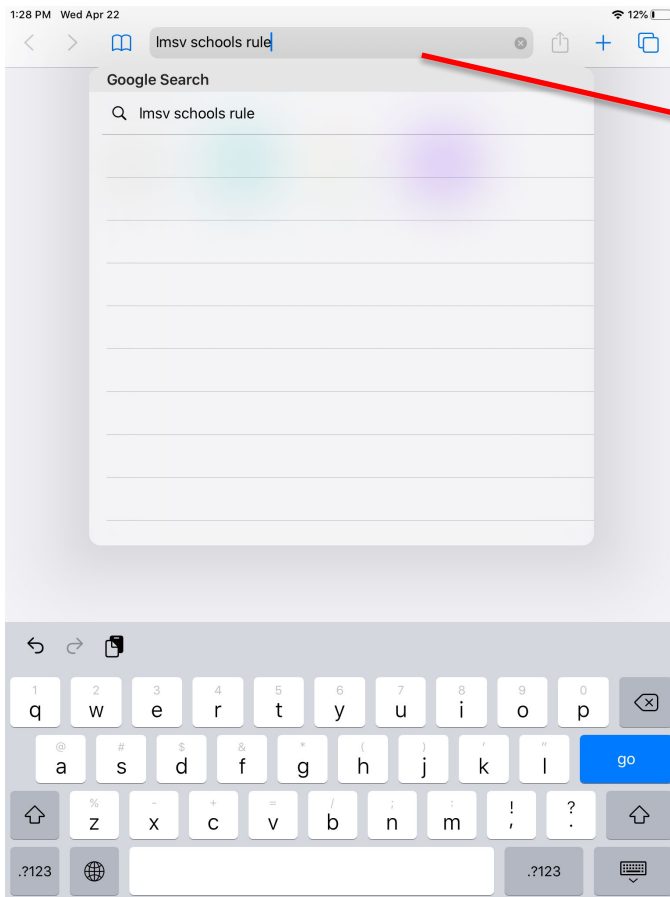


1. Click on the Safari icon
(Compass/ blue circle with red and white line in the middle)



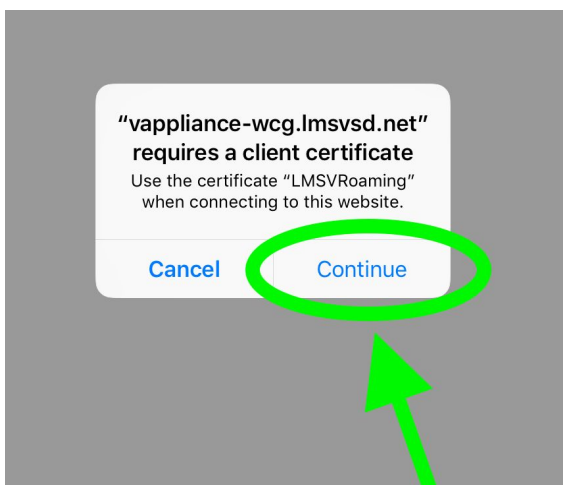
Can't find Safari?

- Swipe DOWN or Swipe RIGHT
- Type "Safari" in the search bar
- Click on Safari icon



2. Type anything in search bar

3. Click “go”



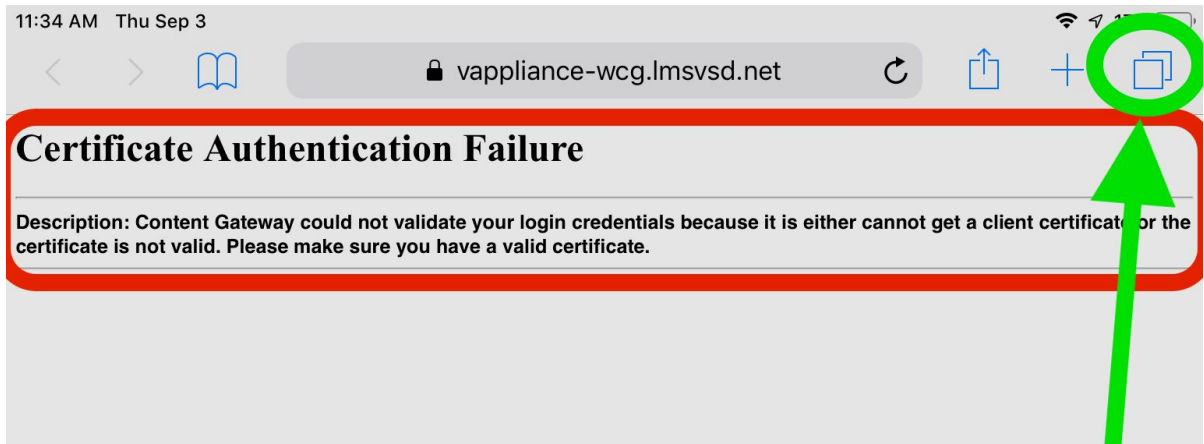
4. Click “Continue” on popup

**All done! Click Home button
(round button on the iPad) to exit.**

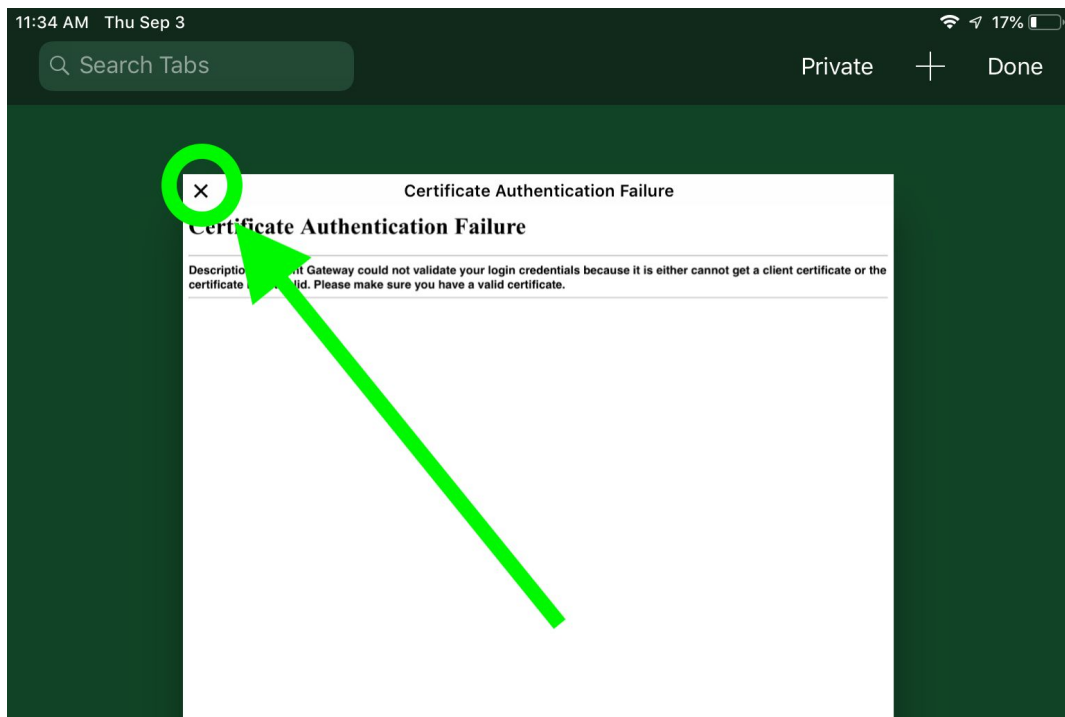
No popup / hit cancel by accident?? Keep reading...

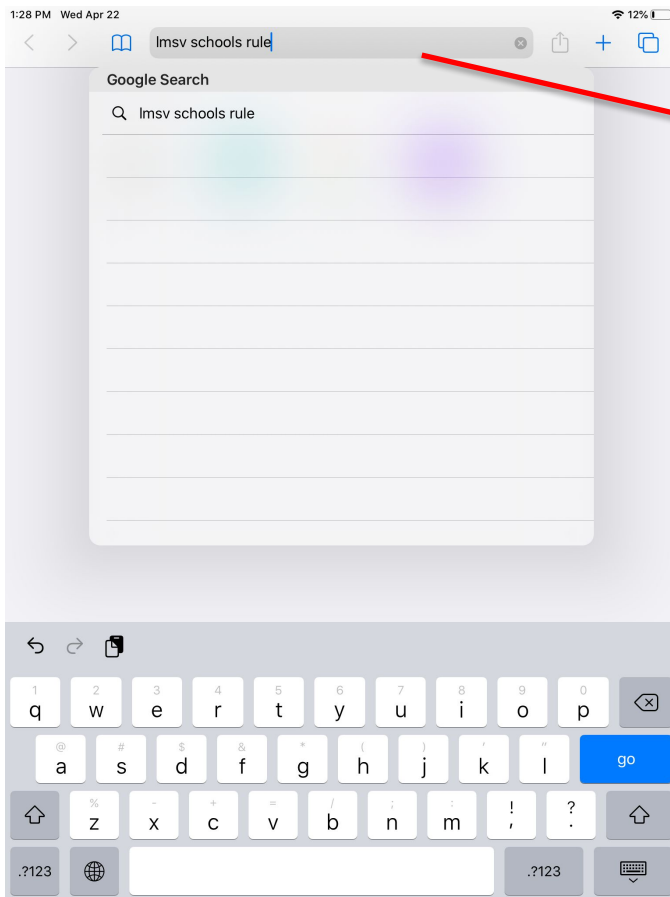
No popup? Hit cancel by accident? Keep reading to get the popup back...

A. In Safari, click on the tab icon



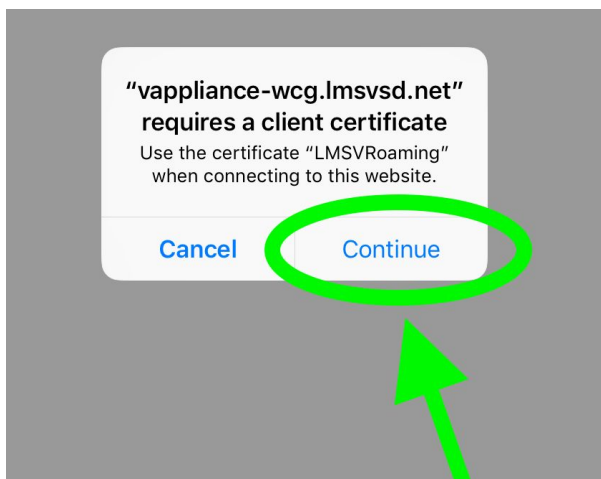
B. Press the x until all tabs are closed





C. Type anything in search bar

D. Click “go”



E. Click “Continue” on popup

**All done! Click Home button
(round button on the iPad) to exit.**