

Measure V Bond Program Update

La Mesa – Spring Valley Schools

Presentation to the Citizens' Bond Oversight Committee

May 18, 2022

Christina Becker, Executive Director Facilities Management
Mark Claussen, Bond Program Manager



Program Update Overview

- Current Project Status

May 10, 2022

- Project Grouping and Sequencing

La Mesa – Spring Valley Schools

- Budget Review
- Upcoming Activities



Current Project Status

- **Since Last Report November 2, 2021**
 - Completed security fencing at La Mesa Dale Elementary (replaced 4 ft. fence)
 - Completed abatement of LMAAC crawlspace
 - Completed selection of Bundles A and B project architects
 - Completing design of STEAM slope stabilization
 - Completing site topographic surveys
 - Completing draft facility design standards
 - Continuing assessments of play & shade structures
 - Continuing assessments of underground piping
 - Completing selection of first Lease Lease-Back (LLB) construction team
 - STEAM slope & middle school entrance modernizations
 - Completing Qualification selection of Inspectors of Record (IOR)

LMAAC Crawlspace Abatement



Condition Assessment
Industrial Hygienist



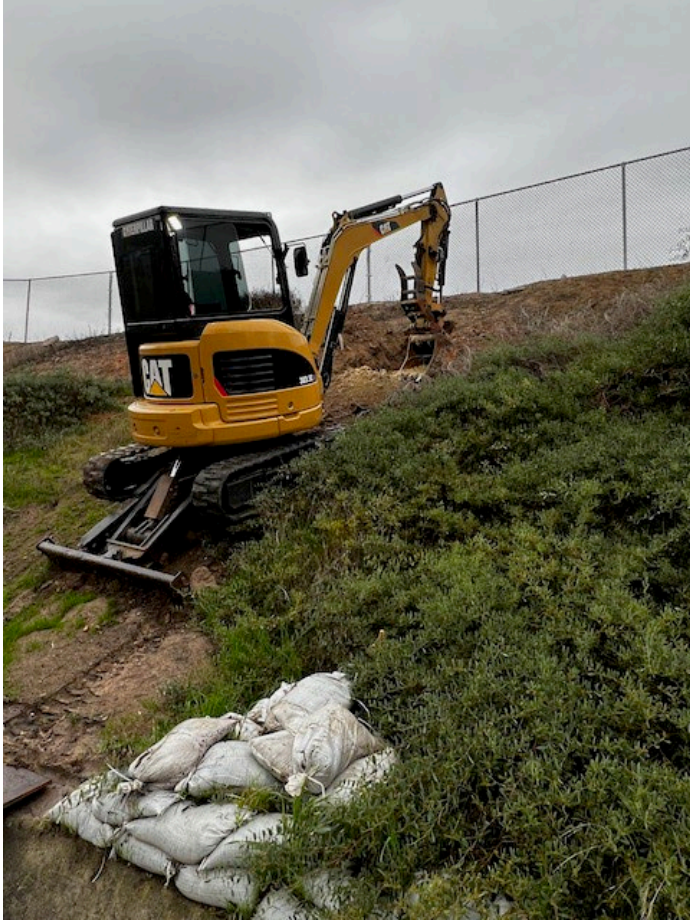
Abatement Teams Working Spring Break



Soil Removal, Soil Containment.
Completed on Schedule with Budget
Surplus

Air Test Passed for Occupancy by Industrial Hygienist.

STEAM Slope Stabilization



Investigation



Soil Testing



Evaluation
Geotechnical Engineer, NOVA

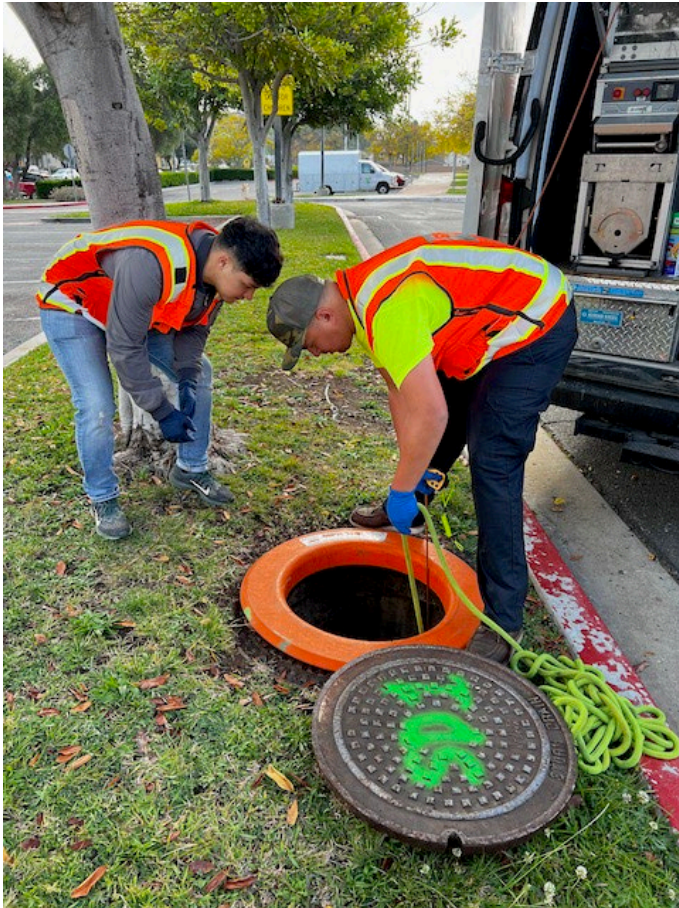
School Site Surveys and Topography



Site Surveys assist Project Architects and Engineers with data to support final design for fencing, path of travel improvements and infrastructure drainage improvements

Also confirms boundaries for site legal descriptions and Property Titles

Underground Pipe Assessments



Stormwater Drains

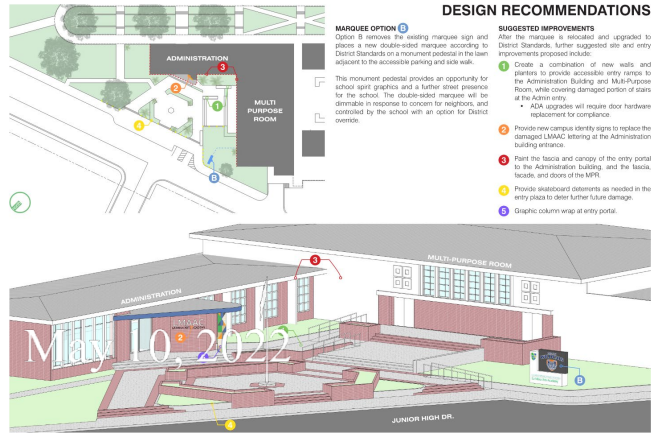


Camera Inspection

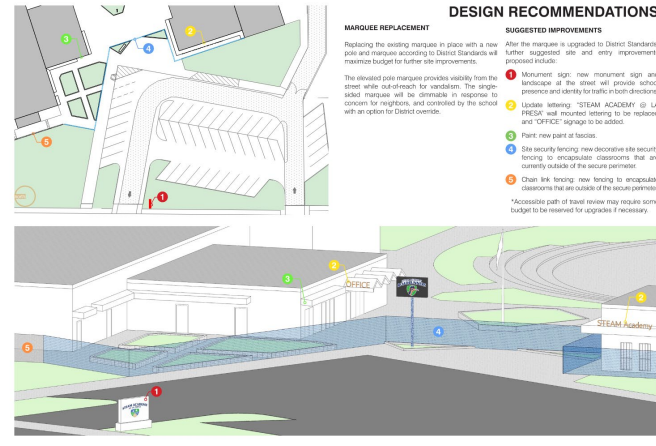


CB9 -
 CO7_cbf8a1f6-7ca3-492a-b1e9-f269475fa35d_20220414_134
 223_678.jpg, 00:00:18, 0.50
 Broken Soil Visible from 4 o'clock to 9 o'clock

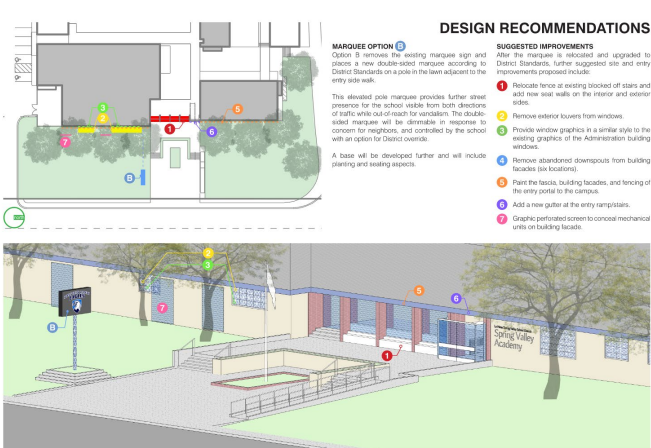
Middle School Entrance Modernization



SECTION 04
LA MESA - SPRING VALLEY SCHOOLS
MIDDLE SCHOOL ENTRANCE PROJECTS
ASSESSMENT BOOK
ARCHITECTS
MOSEY
DREY
April 2022



SECTION 04
LA MESA - SPRING VALLEY SCHOOLS
MIDDLE SCHOOL ENTRANCE PROJECTS
ASSESSMENT BOOK
ARCHITECTS
MOSEY
DREY
April 2022



SECTION 03
LA MESA - SPRING VALLEY SCHOOLS
MIDDLE SCHOOL ENTRANCE PROJECTS
ASSESSMENT BOOK
ARCHITECTS
MOSEY
DREY
April 2022



SECTION 04
LA MESA - SPRING VALLEY SCHOOLS
MIDDLE SCHOOL ENTRANCE PROJECTS
ASSESSMENT BOOK
ARCHITECTS
MOSEY
DREY
April 2022

Collaborative schematic design work with District Staff and Site Principals at each site:

La Mesa – Spring Valley Schools
LMAAC
Parkway
STEAM
Spring Valley Academy

DRAFT

Project Bundling and Sequencing

Guidelines

- Follow our program goals
- Begin in areas of highest need
- Address critical priority needs for infrastructure improvements
- Make efficient use of program funding
 - Bundle projects into groups for economy of scale in construction delivery
 - Bundle projects for geographic efficiency in construction coordination



Project Groupings and Sequencing

Bundle A

Middle School Entrance Modernization
STEAM Slope Stabilization

Bundle B AREA 3

Casa de Oro Elementary
Highlands Elementary
Loma Elementary
Murdock Elementary
Sweetwater Springs Elementary
Spring Valley Academy /Drop Off Safety at Ops Center

Bundle C AREA 2

La Mesa Dale Elementary
Lemon Avenue Elementary
Rolando Elementary
La Mesa Arts Academy
Maryland Ave. Elementary

Bundle D AREA 4

Avondale Elementary
Bancroft Elementary
Kempton Literacy Academy
La Presa Elementary
Rancho Elementary
STEAM

Bundle E AREA 1

Fletcher Hills Elementary
Murray Manor Elementary
Northmont Elementary
Parkway Middle School

Education Center Site Improvements

Infrastructure Improvements - Districtwide

Current Program Financials



La Mesa - Spring Valley
School Facilities Master
Plan Dashboard

Program Overview

Project Detail

Program Schedule

Project Groupings

Current Budget

\$136,000,000

Job to Date Costs

\$11,925,396

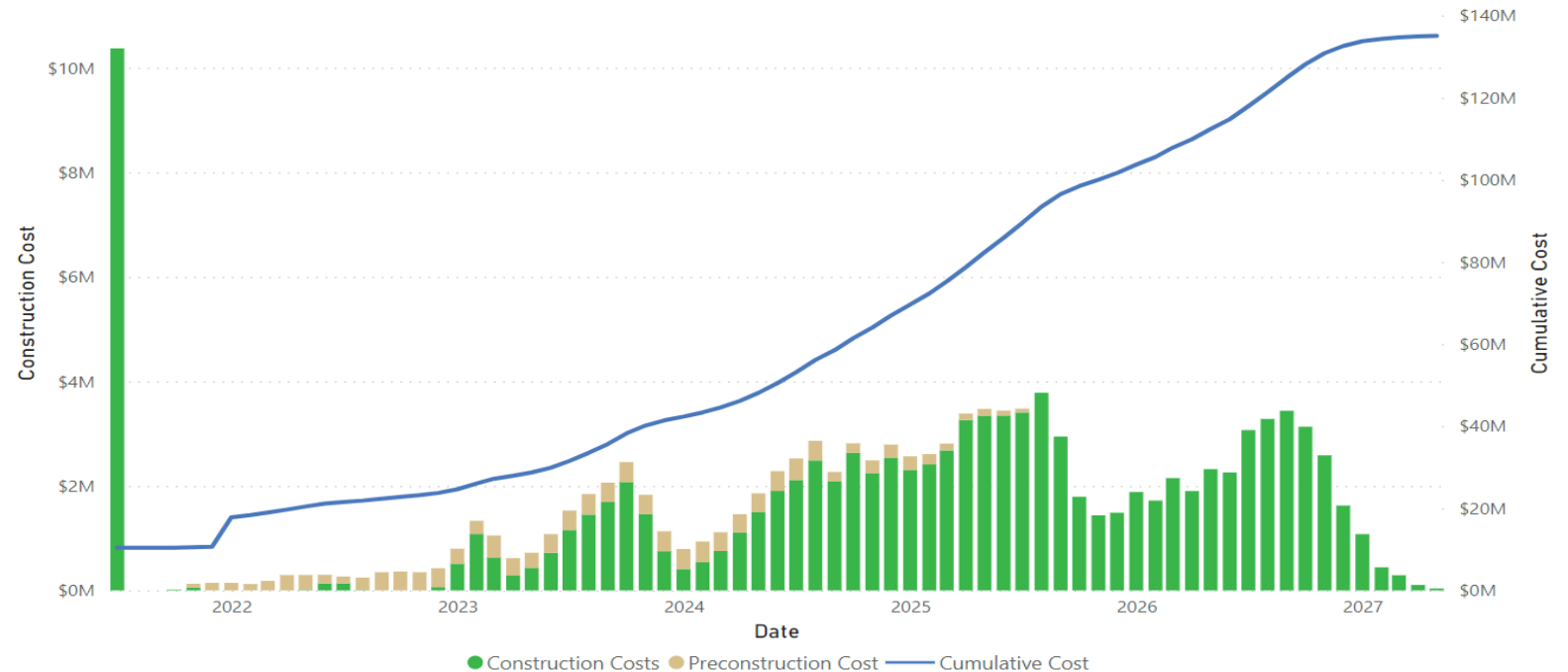
Remaining Budget

\$124,074,604



DETAIL

CASHFLOW



Current Program Financials

Row Labels	Current Budget	Committed Costs	Job to Date Costs	Remaining Budget
Bundle A	9,119,964	357,970	31,400	9,088,564
Bundle B	19,094,288	1,361,288	137,107	18,957,181
Bundle C	20,157,959	307,158	146,246	20,011,713
Bundle D	18,821,046	219,930	22,490	18,798,556
Bundle E	28,493,402	174,079	28,864	28,464,538
Education Center Site Improvements	6,248,616	-	-	6,248,616
Energy Efficiency Projects - Districtwide	10,371,056	10,371,056	10,371,056	-
Infrastructure Repairs - Districtwide	6,443,179	-	-	6,443,179
Operations Center Trailer Demolition	65,253	68,306	46,681	18,572
Portable Building	329,546	51,698	37,984	291,562
Program Common Costs	9,855,692	1,997,259	1,103,568	8,752,124
Contingency	3,000,000	-	-	3,000,000
Reserve	4,000,000	-	-	4,000,000
Grand Total	136,000,000	14,908,744	11,925,396	124,074,604

Upcoming Activities

- Complete design Bundle A, middle school entrance modernization
- Complete design of Bundles B & C school site improvements
- Start of construction at STEAM slope stabilization
- Start construction of middle school entrance modernizations





Measure V Bond Program Update

Dashboard Demonstration



Measure V Bond Program Update

Questions.....