



# Measure V

# Bond Program Update

La Mesa – Spring Valley Schools

Presentation to the Citizens' Bond Oversight Committee

August 10, 2022

Christina Becker, Executive Director Facilities Management  
Mark Claussen, Bond Program Manager



# Program Update Overview

- Campus Emergency Security Improvements
- Current Project Status
- Upcoming Activities
- Financial Summary
- Schedule Summary



# Program Guiding Principles

- Follow program goals with distribution of work across 21 schools
- Begin in areas of highest need
- Address critical priority needs for infrastructure improvements
- Make efficient use of program funding
  - Bundle projects into groups for economy of scale in construction delivery
  - Bundle projects for geographic efficiency in construction coordination



# Campus Emergency Security Improvements

- Fencing and Gates
  - Highlands Elementary
  - Maryland Ave Elementary
  - STEAM Academy
  - La Mesa Arts Academy (LMAAC)
- Single Point Access Video and Gate Control Systems
  - 19 schools (Spring Valley Academy and Parkway Middle have systems)



# Campus Emergency Security Improvements



Planning



Design



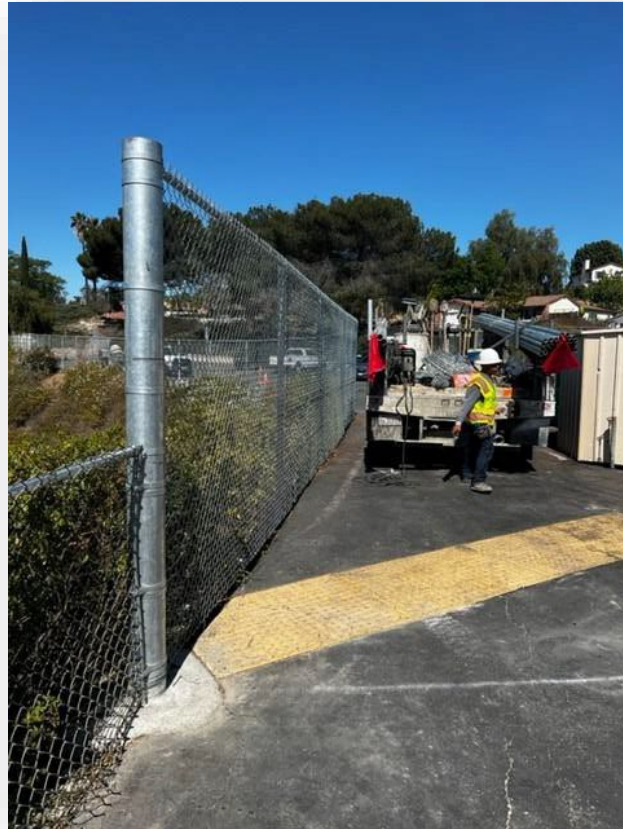
Construction



# Campus Emergency Security Improvements



Entrance Gate/Fence Additions  
Highlands Elementary



Extending Fence from 4 to 8 feet



Black Vinyl Coated Fencing  
Facing Public



# Current Project Status

- **Since Last Report May 18, 2022**

- Started Campus Emergency Security improvements
- Contracted with first Lease Lease-Back (LLB) development team
  - STEAM slope & middle school entrance modernizations
- Submitted Bundle A construction documents to Division of State Architect (DSA)
- Completed facility design standards
- Completed assessments of underground piping 6 sites (sewer and storm)
- Completed qualification-based selection of Inspectors of Record (IOR) and Special Inspection and Testing firms
- Completed assessments of play & shade structures
- Continuing site topographic surveys
- Continuing design of 7 school site improvement projects contained in Bundle B
- Started design of 11 school site improvement projects contained in Bundles C and D



# Current Project Status

- **Upcoming Activities**

- Complete campus emergency security improvements
- Start Bundle A Construction
  - Slope stabilization construction at STEAM Academy
  - Middle school entrance modernizations
- Continue design of Bundle B, C and D school site improvements
- Select next Lease Lease-Back (LLB) development team
- Select architect for Bundle E school site improvements  
(4 remaining school site improvement projects)



# Pipe Assessment Field Work Complete



Condition assessment data gathered via closed circuit video is provided to the Architect/Engineer teams for developing options for the scope of work for underground sewer and stormwater drain infrastructure improvements: Spring Valley Academy, Casa Del Oro, Sweetwater Springs, Parkway Middle, Northmont, La Presa.





Current Budget

\$136,000,000

Job to Date Costs

\$12,773,430

Remaining Budget

\$123,226,570

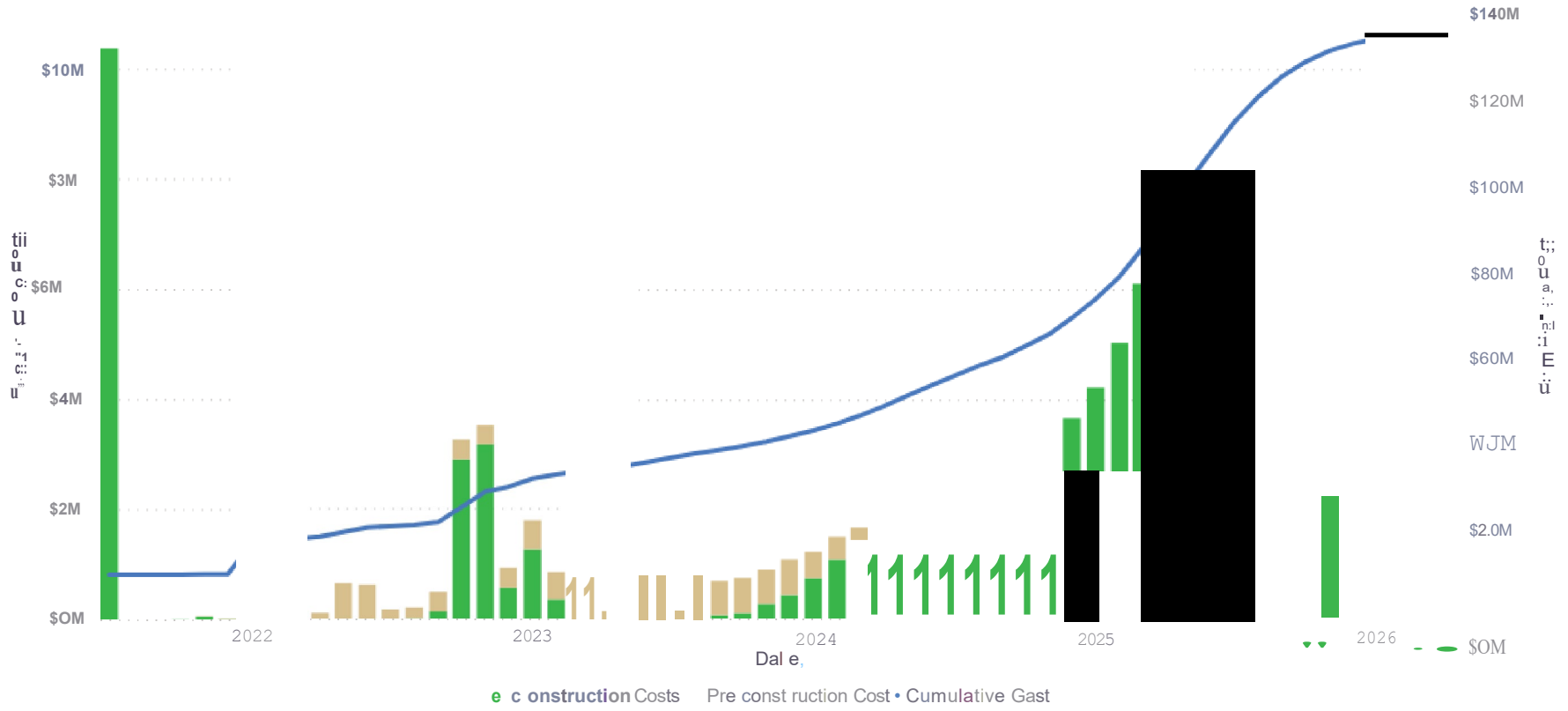
Spending Gauge

\$12.77M

\$0.00M

\$136.00M

Cumulative Cost, Construction Cost



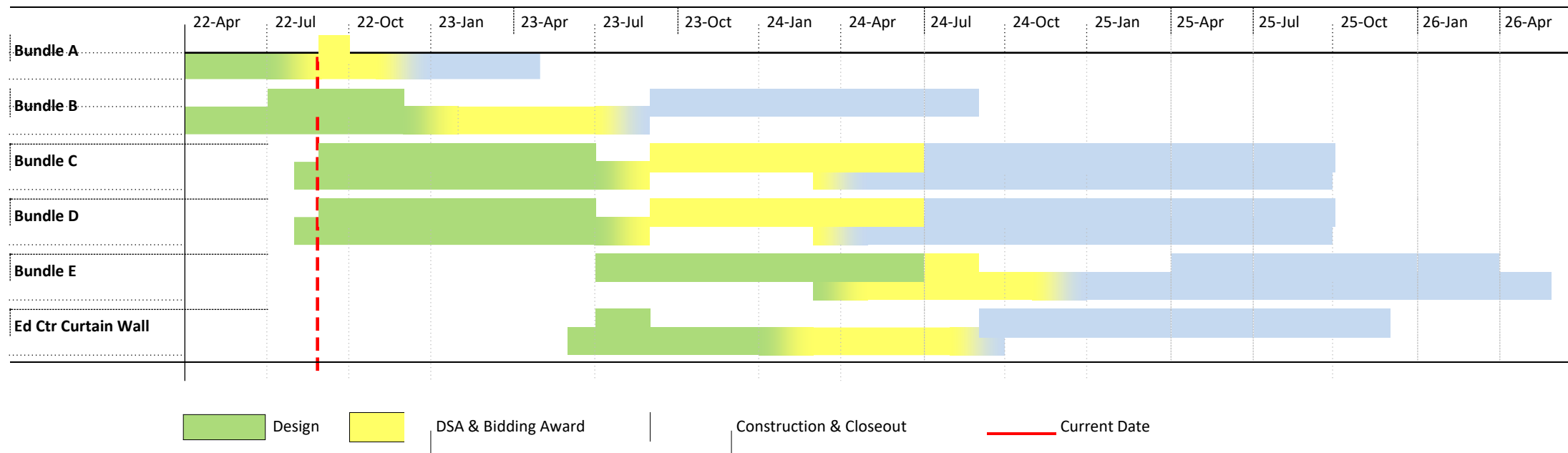
# Current Program Financial Summary

Project Description	Current Budget	Committed Costs	Job to Date Costs	Remaining Budget
Bundle A	\$9,119,964	\$448,719	\$129,626	\$8,990,338
Bundle B	\$19,094,288	\$1,602,699	\$283,331	\$18,810,957
Bundle C	\$20,157,959	\$1,568,148	\$253,362	\$19,904,597
Bundle D	\$18,821,046	\$1,494,990	\$106,173	\$18,714,873
Bundle E	\$28,493,402	\$184,175	\$62,085	\$28,431,317
Education Center Site Improvements	\$6,248,616	\$0	\$0	\$6,248,616
Energy Efficiency Projects - Districtwide	\$10,371,056	\$10,371,056	\$10,371,056	\$0
Infrastructure Repairs - Districtwide	\$6,443,179	\$572,819	\$0	\$6,443,179
Operations Center Trailer Demolition	\$65,253	\$62,106	\$62,106	\$3,147
Portable Building	\$329,546	\$51,891	\$38,177	\$291,369
Program Common Costs	\$9,855,692	\$3,284,651	\$1,467,514	\$8,388,177
Contingency	\$3,000,000	\$0	\$0	\$3,000,000
Reserve	\$4,000,000	\$0	\$0	\$4,000,000
<b>Total</b>	<b>136,000,000</b>	<b>19,641,253</b>	<b>12,773,429</b>	<b>123,226,570</b>





# Schedule





# Measure V Bond Program Update

Questions.....