



STEAM ACADEMY

ENTRY IMPROVEMENTS

PROJECT INFORMATION

| | |
|------------------|---------------------------------|
| PHASE/STATUS | DSA |
| PROJECT NUMBER | 9408 |
| PROJECT BUNDLE | A |
| PROJECT DELIVERY | Lease-Lease Back |
| SITE LOCATION | Online Map Link |

PROJECT TEAM

| | |
|--------------|---------------------------|
| PROJECT MGR. | Paul Cristilli (Kitchell) |
| ARCHITECT | Mosher-Drew |
| CONTRACTOR | Balfour Beatty |
| INSPECTOR | Pending Selection |

PROJECT SCOPE

Current scope to include monument signage, landscaping, hardscaping, marquee signage, and/or other general entrance improvements with the goal of ensuring the campus entry is safe and welcoming while honoring the architectural integrity and style of the existing buildings.

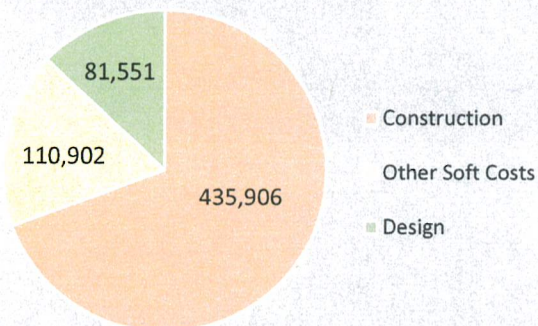
AREAS RECEIVING IMPROVEMENT



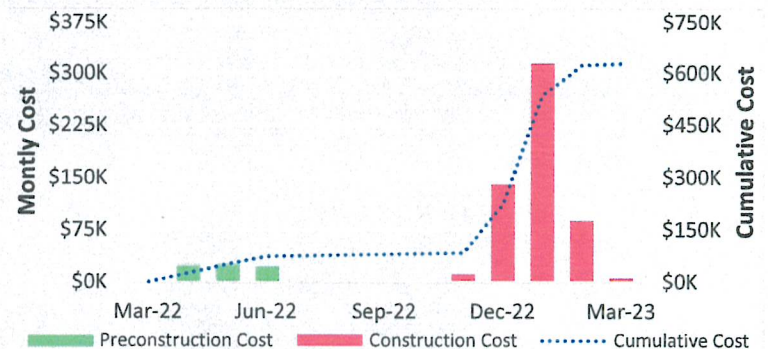
PROJECT FINANCIALS

| | | | | | |
|----------------|-------------|---------------------|---------|------------------|---------|
| PROGRAM FUND | 136,000,000 | PROJECT COMMITMENTS | 62,275 | COST TO DATE | 17,460 |
| PROJECT BUDGET | 628,359 | COMMITMENT BALANCE | 566,084 | REMAINING BUDGET | 610,900 |

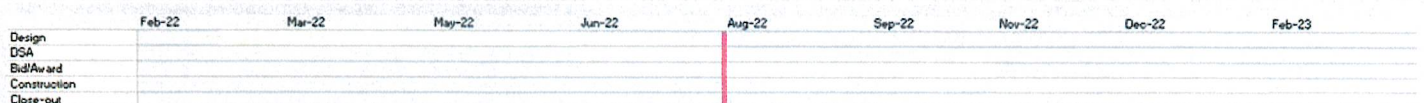
BUDGET COMPOSITION



MONTHLY/CUMULATIVE COST



PROJECT SCHEDULE





PROJECT INFORMATION

| | |
|------------------|---------------------------------|
| PHASE/STATUS | Design |
| PROJECT NUMBER | 9407 |
| PROJECT BUNDLE | A |
| PROJECT DELIVERY | Lease-Lease Back |
| SITE LOCATION | Online Map Link |

PROJECT TEAM

| | |
|--------------|---------------------------|
| PROJECT MGR. | Paul Cristilli (Kitchell) |
| ARCHITECT | Mosher-Drew |
| CONTRACTOR | Balfour Beatty |
| INSPECTOR | Pending Selection |

PROJECT SCOPE

Remediation of the slope as recommended in the geotechnical evaluation which includes the removal of existing clay soils replacing with stabilization to improve the slope stability. Repair existing distressed hardball courts.

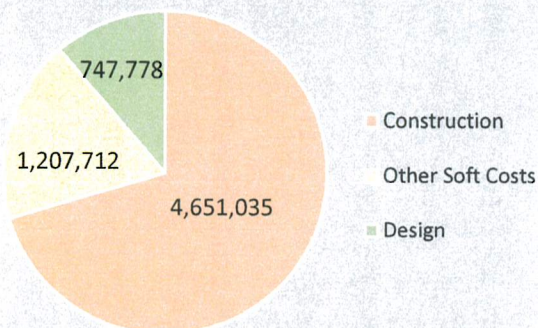
AREAS RECEIVING IMPROVEMENT



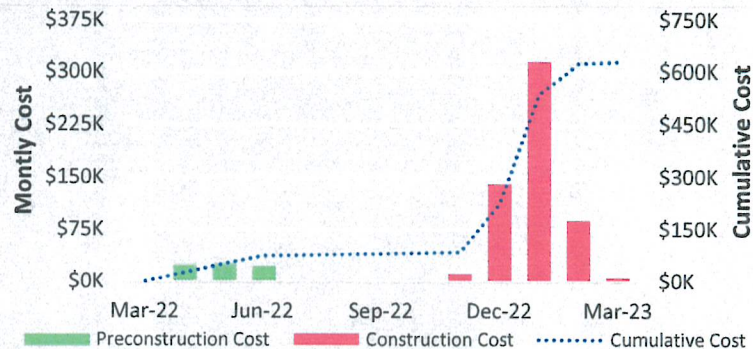
PROJECT FINANCIALS

| | | | | | |
|----------------|-------------|---------------------|-----------|------------------|-----------|
| PROGRAM FUND | 136,000,000 | PROJECT COMMITMENTS | 150,094 | COST TO DATE | 59,786 |
| PROJECT BUDGET | 6,606,525 | COMMITMENT BALANCE | 6,456,431 | REMAINING BUDGET | 6,546,739 |

BUDGET COMPOSITION



MONTHLY/CUMULATIVE COST



PROJECT SCHEDULE

| | Feb-22 | Mar-22 | May-22 | Jun-22 | Aug-22 | Sep-22 | Nov-22 | Dec-22 | Feb-23 |
|--------------|--------|--------|--------|--------|--------|--------|--------|--------|--------|
| Design | | | | | | | | | |
| DSA | | | | | | | | | |
| Bid/Award | | | | | | | | | |
| Construction | | | | | | | | | |
| Close-out | | | | | | | | | |