

Measure V Bond Program Update

La Mesa – Spring Valley Schools

Presentation to the Citizens' Bond Oversight Committee

March 15, 2023

Mark Claussen, Bond Program Manager



Program Update Overview

- **Current Project Status**
- **Upcoming Activities**
- **Financial Summary**
- **Schedule Summary**



Current Project Status

- **Since Last Report November 16, 2022**
 - Started Bundle A Construction (Entrance Improvements)
 - Completed STEAM slope remediation project
 - Completed campus-controlled access security improvements
 - Submitted Bundle B to Division of State Architect (7 school sites)
 - Selected Architect for Bundle E site improvements (4 school sites)
 - Continuing design for Bundle C and D (11 school sites)
 - Started design Bundle E (3 school sites)



LMAAC Entrance Modernization



Access Ramp

LMAAC Entrance Modernization



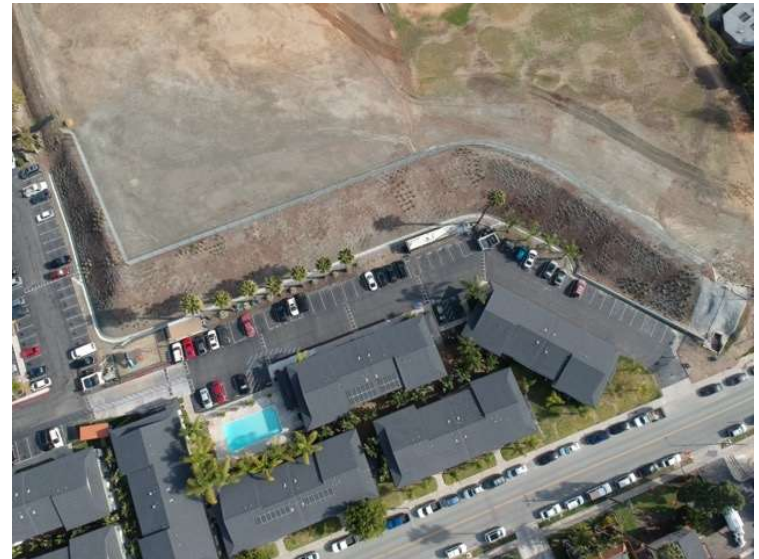
Fencing, New Marquee, Graphic Panels, Paint

STEAM Academy



Access Improvements, New Marquee, Fencing, Landscaping, Graphic Panels

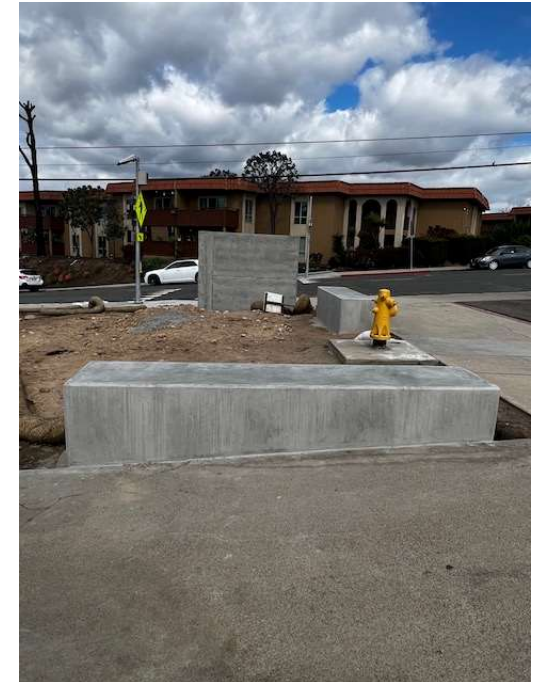
STEAM Academy Slope



Complete



Parkway Sports and Health Science Academy



New Marquee, Landscaping, Graphic Panels, Paint



Spring Valley Academy



New Marquee, Landscaping, Window Graphics, Paint



Upcoming Activities

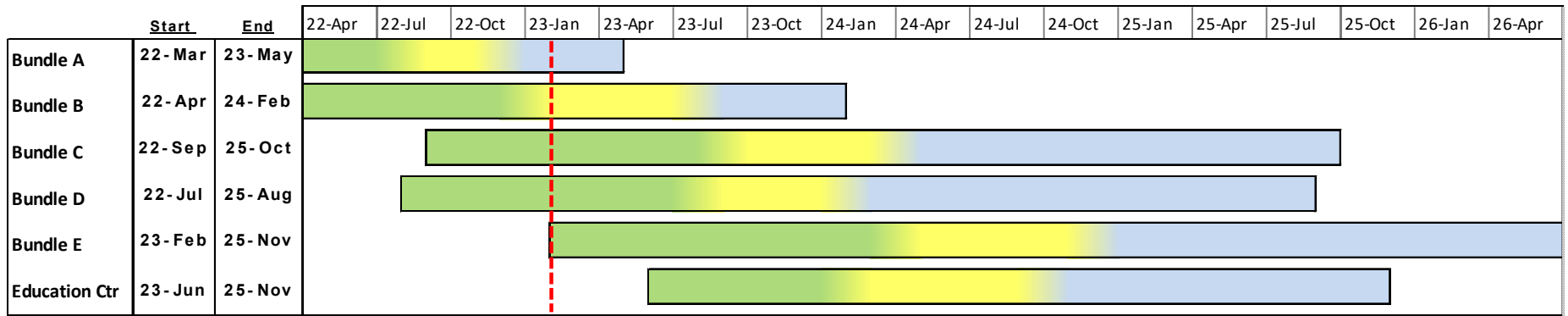
- Complete Bundle A Entrance Improvements four Middle Schools
- Start Bundle B construction, 7 School Site Improvements
- Continue Design of Bundle C, D, and E School Site Improvements
- Select Lease Lease-Back (LLB) development teams Bundles D and E
- Complete Semi-Annual Budget Review and Update (March 2023)

Current Program Financial Summary

Project Name	Original Budget	Current Budget	Budget Changes	Committed Costs	Expenditures	Remaining Budget	% Committed
Elementary Schools							
Avondale Site Improvements	\$2,640,853.53	\$2,640,853.53	\$0.00	\$222,794.90	\$39,234.50	\$2,418,058.63	8.44%
Bancroft Site Improvements	\$1,893,596.29	\$1,893,596.29	\$0.00	\$183,094.90	\$33,855.50	\$1,710,501.39	9.67%
Casa de Oro Site Improvements	\$4,121,685.39	\$4,121,685.39	\$0.00	\$429,298.09	\$179,509.41	\$3,692,387.30	10.42%
Fletcher Hills Elementary School	\$4,142,269.06	\$4,142,269.06	\$0.00	\$264,345.80	\$4,750.00	\$3,877,923.26	6.38%
Highlands Elementary Site Improvements	\$1,602,953.80	\$1,852,953.80	\$250,000.00	\$277,715.59	\$130,226.92	\$1,575,238.21	14.99%
Kempton Site Improvements	\$2,676,367.30	\$2,676,367.30	\$0.00	\$241,628.68	\$39,169.50	\$2,434,738.62	9.03%
La Mesa Dale Site Improvements	\$8,497,137.87	\$8,497,137.87	\$0.00	\$705,283.09	\$62,003.00	\$7,791,854.78	8.30%
La Presa Site Improvements	\$4,987,447.34	\$4,987,447.34	\$0.00	\$369,898.12	\$58,980.50	\$4,617,549.22	7.42%
Lemon Avenue Site Improvements	\$1,751,735.70	\$1,751,735.70	\$0.00	\$197,265.85	\$25,720.00	\$1,554,469.85	11.26%
Loma Elementary Site Improvements	\$782,071.17	\$1,007,071.17	\$225,000.00	\$149,491.22	\$60,311.75	\$857,579.95	14.84%
Maryland Avenue Site Improvements	\$1,584,913.59	\$1,584,913.59	\$0.00	\$66,845.51	\$25,719.50	\$1,518,068.08	4.22%
Murdock Site Improvements	\$1,659,839.77	\$2,199,839.77	\$540,000.00	\$228,052.58	\$94,729.27	\$1,971,787.19	10.37%
Murray Manor Site Improvements	\$2,273,753.02	\$2,273,753.02	\$0.00	\$167,845.00	\$11,988.00	\$2,105,908.02	7.38%
Northmont Site Improvements	\$5,408,296.52	\$5,408,296.52	\$0.00	\$345,147.00	\$26,299.48	\$5,063,149.52	6.38%
Rancho Site Improvements	\$2,001,411.81	\$2,001,411.81	\$0.00	\$181,401.65	\$36,514.00	\$1,820,010.16	9.06%
Rolando Site Improvements	\$2,755,932.66	\$2,755,932.66	\$0.00	\$255,090.34	\$25,719.50	\$2,500,842.32	9.26%
Sweetwater Springs Site Improvements	\$5,629,939.77	\$5,038,443.29	(\$591,496.48)	\$534,262.16	\$110,407.22	\$4,504,181.13	10.60%
Middle Schools							
Parkway Middle School Entrance Modernizations	\$628,359.69		\$0.00	\$628,892.54	\$43,749.94	(\$532.85)	
Parkway Middle School Improvements	\$16,669,083.19	\$16,669,083.19	\$0.00	\$1,050,637.24	\$53,462.69	\$15,618,445.95	6.30%
La Mesa Arts Academy Entrance Modernizations	\$628,359.70		\$147,887.99	\$974,135.31	\$48,185.18	(\$197,887.62)	
La Mesa Arts Academy Site Improvements	\$5,568,238.99	\$5,075,454.99	(\$492,784.00)	\$646,503.11	\$123,044.50	\$4,428,951.88	12.74%
Spring Valley Academy Entrance Modernizations	\$628,359.69		\$0.00	\$745,753.81	\$45,549.69	(\$117,394.12)	
Spring Valley Academy Site Improvements	\$3,389,591.21	\$3,389,591.21	\$0.00	\$381,855.81	\$79,395.26	\$3,007,735.40	11.27%
STEAM Academy Entrance Modernizations	\$628,359.69		\$91,599.00	\$769,192.31	\$48,053.69	(\$49,233.62)	
STEAM Academy Site Improvements	\$4,621,369.51	\$4,529,770.51	(\$91,599.00)	\$376,623.02	\$51,442.50	\$4,153,147.49	8.31%
Other District Sites							
STEAM Slope Stabilization	\$6,606,524.75	\$6,606,524.75	\$0.00	\$2,230,811.95	\$1,973,130.48	\$4,375,712.80	33.77%
Infrastructure Repairs - Districtwide	\$6,443,178.98	\$6,443,178.98	\$0.00	\$733,723.95	\$552,529.97	\$5,709,455.03	11.39%
Energy Efficiency Projects - Districtwide	\$10,371,056.42	\$10,371,056.42	\$0.00	\$10,371,056.42	\$10,371,056.42	\$0.00	100.00%
Operations Center							
Operations Center Trailer Demolition	\$65,252.63	\$62,106.00	(\$3,146.63)	\$62,106.00	\$62,106.00	\$0.00	100.00%
Portable Building	\$329,545.99	\$38,176.72	(\$291,369.27)	\$38,176.72	\$38,176.72	\$0.00	100.00%
Operations Center Site Improvements	\$1,908,207.11	\$1,908,207.11	\$0.00	\$203,459.86	\$16,330.00	\$1,704,747.25	10.66%
Education Service Center						\$0.00	
Education Center Site Improvements	\$6,248,616.17	\$6,248,616.17	\$0.00	\$0.00	\$0.00	\$6,248,616.17	0.00%
Program Common Costs & Contingencies							
Program Administration	\$9,855,691.69	\$9,855,691.69	\$0.00	\$2,088,691.14	\$2,283,709.35	\$7,767,000.55	21.19%
Program Contingency	\$3,000,000.00	\$3,451,281.00	\$451,281.00	\$0.00	\$0.00	\$3,451,281.00	0.00%
Program Reserve	\$4,000,000.00	\$4,000,000.00	\$0.00	\$0.00	\$0.00	\$4,000,000.00	0.00%
Program Totals	\$136,000,000.00	\$136,235,372.61	\$235,372.61	\$26,121,079.67	\$16,755,060.44	\$110,114,292.94	19.17%



Schedule



Design
 DSA & Bidding Award
 Construction & Closeout
 Current Date



Measure V Bond Program Update

Questions.....