



Measure V Bond Program Update

La Mesa – Spring Valley Schools

Presentation to the Citizens' Bond Oversight Committee

September 13, 2023

Dr. Robert Cochran, Director, Business Services and Chief Safety Officer

Mark Claussen, Bond Program Manager



Program Update Overview

- **Current Project Status**
- **Upcoming Activities**
- **Financial Summary**
- **Schedule Summary**



Current Project Status

- **Since Last Report May 17, 2022**
- Completed Bundle A Entrance Improvements Four Middle Schools
- Started Bundle B Work, Emphasis on Summer Underground Infrastructure
- Continue Design of Bundle C, D, and E School Site Improvements
 - Bundle D submitted to Division of State Architect (DSA) for review and approval
- Selected Lease Lease-Back (LLB) Development Team Bundles D and E
 - Lusardi Construction
- Completed Drainage Analysis of STEAM Fields

Completed Entrance Modernizations



LMAAC



Spring Valley Academy

Completed Entrance Modernizations



Parkway



STEAM



Bundle B Construction Start

- Summer 2023 Construction Start
 - Casa De Oro
 - Spring Valley Academy
 - Highlands Elementary
 - Loma Elementary
 - Murdock Elementary
 - Sweetwater Springs Elementary

Casa De Oro Elementary



Underground Infrastructure Summer Work

Casa De Oro Elementary



Underground Infrastructure Summer Work and New Entrances



Spring Valley Academy



New Access Ramp and Bus Drop-off



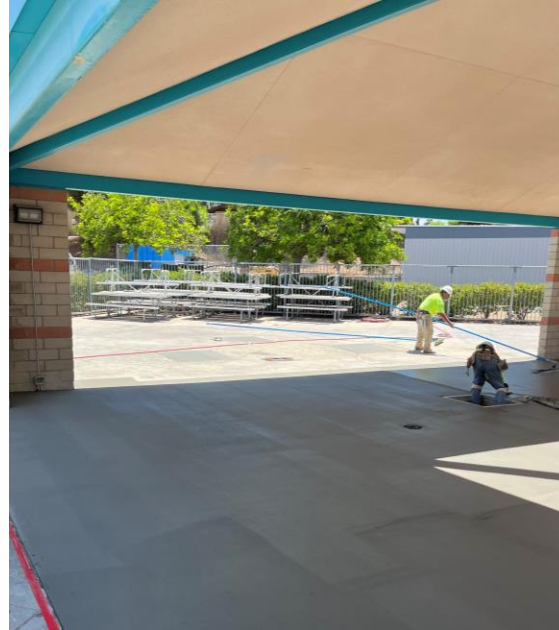
Spring Valley Academy



Underground Infrastructure Work



Sweetwater Springs Elementary



Underground Infrastructure Work, Palm Tree Removal, ADA Parking Improvements



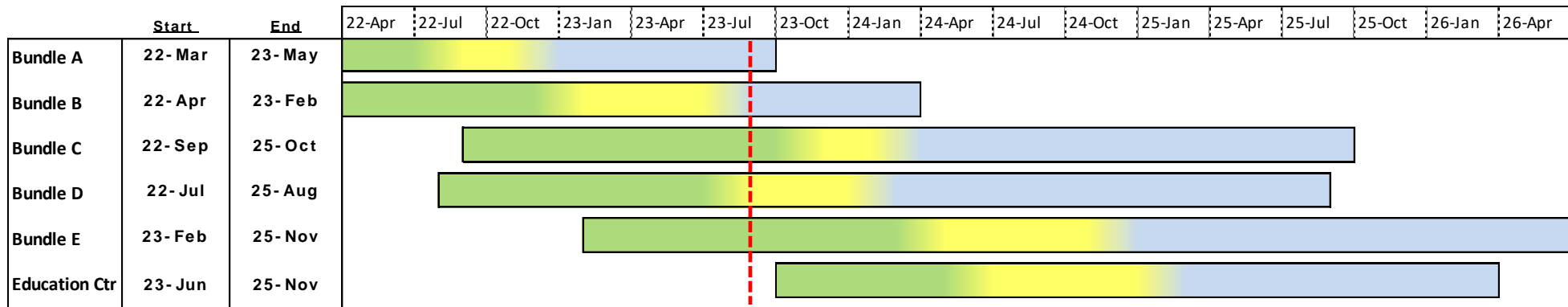
Upcoming Activities

- Complete Bundle B Construction, 7 School Site Improvements
 - Scheduling “Disruptive” work during October Break
- Continue Design of Bundles C, D and E School Site Improvements
 - Submit Bundle C to DSA
- Complete DSA Approval of Bundle D

Current Program Financial Summary

Project Name	Original Budget	Current Budget	Budget Changes	Committed Costs	Expenditures	Remaining Budget	% Committed
Elementary Schools							
Avondale Site Improvements	\$2,640,853.53	\$2,147,528.43	(\$493,325.10)	\$247,776.35	\$130,604.35	\$1,899,752.08	11.54%
Bancroft Site Improvements	\$1,893,596.29	\$1,850,271.19	(\$43,325.10)	\$199,891.98	\$108,740.98	\$1,650,379.21	10.80%
Casa de Oro Site Improvements	\$4,121,685.39	\$3,754,236.87	(\$367,448.52)	\$3,668,461.63	\$1,905,835.00	\$85,775.24	97.72%
Fletcher Hills Elementary School	\$4,142,269.06	\$4,145,479.86	\$3,210.80	\$267,396.95	\$72,500.23	\$3,878,082.91	6.45%
Highlands Elementary Site Improvements	\$1,602,953.80	\$2,071,531.58	\$468,577.78	\$1,615,053.84	\$449,663.56	\$456,477.74	77.96%
Kempton Site Improvements	\$2,676,367.30	\$2,284,825.98	(\$391,541.32)	\$266,883.17	\$147,138.42	\$2,017,942.81	11.68%
La Mesa Dale Site Improvements	\$8,497,137.87	\$9,883,280.07	\$1,386,142.20	\$739,434.06	\$352,025.30	\$9,143,846.01	7.48%
La Presa Site Improvements	\$4,987,447.34	\$4,880,365.46	(\$107,081.88)	\$413,987.00	\$228,884.50	\$4,466,378.46	8.48%
Lemon Avenue Site Improvements	\$1,751,735.70	\$1,646,141.21	(\$105,594.49)	\$206,354.04	\$102,694.39	\$1,439,787.17	12.54%
Loma Elementary Site Improvements	\$782,071.17	\$951,804.75	\$169,733.58		\$353,048.91		
Maryland Avenue Site Improvements	\$1,584,913.59	\$1,469,319.10	(\$115,594.49)	\$198,709.16	\$105,259.35	\$1,270,609.94	13.52%
Murdock Site Improvements	\$1,659,839.77	\$2,853,103.81	\$1,193,264.04	\$2,204,679.61	\$522,939.51	\$648,424.20	77.27%
Murray Manor Site Improvements	\$2,273,753.02	\$2,273,753.02	\$0.00	\$165,731.51	\$52,272.36	\$2,108,021.51	7.29%
Northmont Site Improvements	\$5,408,296.52	\$5,411,170.54	\$2,874.02	\$381,212.84	\$108,212.39	\$5,029,957.70	7.04%
Rancho Site Improvements	\$2,001,411.81	\$2,108,443.46	\$107,031.65	\$196,418.93	\$109,695.43	\$1,912,024.53	9.32%
Rolando Site Improvements	\$2,755,932.66	\$3,630,338.17	\$874,405.51	\$267,050.03	\$122,901.08	\$3,363,288.14	7.36%
Sweetwater Springs Site Improvements	\$5,629,939.77	\$3,958,261.57	(\$1,671,678.20)	\$2,201,798.68	\$900,535.84	\$1,756,462.89	55.63%
Middle Schools							
Parkway Middle School Entrance Modernizations	\$628,359.69	\$623,275.50	(\$5,084.19)		\$597,409.10		
Parkway Middle School Improvements	\$16,669,083.19	\$16,707,398.74	\$38,315.55	\$1,117,908.85	\$269,935.43	\$15,589,489.89	6.69%
La Mesa Arts Academy Entrance Modernizations	\$628,359.70	\$1,011,163.50	\$382,803.80		\$977,588.92		
La Mesa Arts Academy Site Improvements	\$5,568,238.99	\$4,860,487.38	(\$707,751.61)	\$674,862.79	\$414,368.57	\$4,185,624.59	13.88%
Spring Valley Academy Entrance Modernizations	\$628,359.69	\$768,275.50	\$139,915.81		\$735,731.48		
Spring Valley Academy Site Improvements	\$3,389,591.21	\$3,449,384.21	\$59,793.00	\$2,945,969.90	\$1,626,661.71	\$503,414.31	85.41%
STEAM Academy Entrance Modernizations	\$628,359.69	\$782,874.50	\$154,514.81		\$793,633.96		
STEAM Academy Site Improvements	\$4,621,369.51	\$4,781,863.53	\$160,494.02	\$420,132.27	\$227,408.37	\$4,361,731.26	8.79%
Other District Sites							
STEAM Slope Stabilization	\$6,606,524.75	\$6,560,840.70	(\$45,684.05)	\$2,488,431.25	\$2,334,084.25	\$4,072,409.45	37.93%
Infrastructure Repairs - Districtwide	\$6,443,178.98	\$6,443,178.98	\$0.00	\$5,000.00	\$5,000.00	\$6,438,178.98	0.08%
Energy Efficiency Projects - Districtwide	\$10,371,056.42	\$10,371,056.42	\$0.00	\$10,371,056.42	\$10,371,056.42	\$0.00	100.00%
Security Fencing	\$718,290.00	\$718,289.50			\$734,617.73		
Operations Center							
Operations Center Trailer Demolition	\$65,252.63	\$150,732.64	(\$3,146.63)	\$150,732.64	\$150,732.64	\$0.00	100.00%
Portable Building	\$329,545.99	\$92,655.75	(\$291,369.27)	\$92,655.75	\$92,655.75	\$0.00	100.00%
Operations Center Site Improvements	\$1,908,207.11	\$1,931,510.38	\$23,303.27	\$199,665.36	\$96,122.49	\$1,731,845.02	10.34%
Education Service Center							
Education Center Site Improvements	\$6,248,616.17	\$6,248,616.17	\$0.00	\$0.00	\$0.00	\$6,248,616.17	0.00%
Program Common Costs & Contingencies							
Program Administration	\$9,855,691.69	\$8,660,922.64	\$0.00	\$3,796,354.93	\$1,499,956.51	\$4,864,567.71	43.83%
Program Contingency	\$3,000,000.00	\$2,941,736.02	\$451,281.00	\$0.00	\$0.00	\$2,941,736.02	0.00%
Program Reserve	\$4,000,000.00	\$4,000,000.00	\$0.00	\$0.00	\$0.00	\$4,000,000.00	0.00%
Program Totals	\$136,000,000.00	\$136,424,117.13	\$1,267,035.99	\$40,824,190.96	\$26,699,914.93	\$95,599,926.17	29.92%

Schedule



Design
 DSA & Bidding Award
 Construction & Closeout
 Current Date



Measure V Bond Program Update

Questions.....