

Measure V

Bond Program Update

La Mesa – Spring Valley Schools

Presentation to the Citizens' Bond Oversight Committee

March 13, 2024

Dr. Robert Cochran, Executive Director, Business Services (Chief Safety & Operations Officer)
Mark Claussen, P.E. , Bond Program Manager



Program Update Overview

- Current Project Status
- Upcoming Activities
- Financial Summary
- Schedule Summary
- Local Labor Participation
- District Major Maintenance Project



Bundle B Construction

- | | |
|---------------------------------|------------------------|
| • Casa de Oro | Substantially Complete |
| • Spring Valley Academy | Substantially Complete |
| • Highlands Elementary | Substantially Complete |
| • Loma Elementary | Substantially Complete |
| • Sweetwater Springs Elementary | Substantially Complete |
| • Murdock Elementary | Complete Spring 2024 |
| • District Operations Center | Complete Spring 2024 |

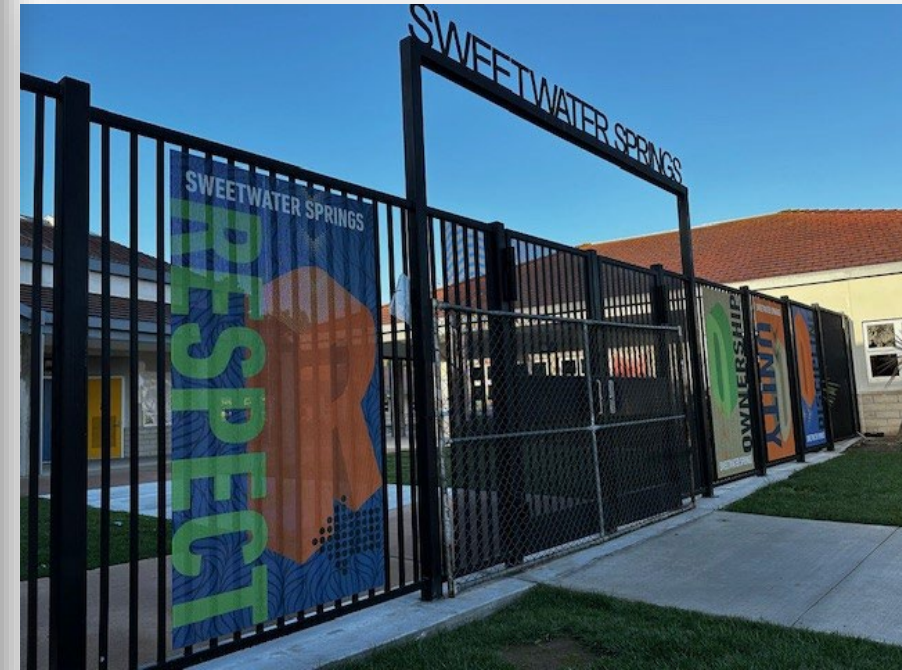
Bundle B Entrance Improvements Graphic Panels and Access Controls



Highlands Elementary



Murdock Elementary



Sweetwater Springs Elementary

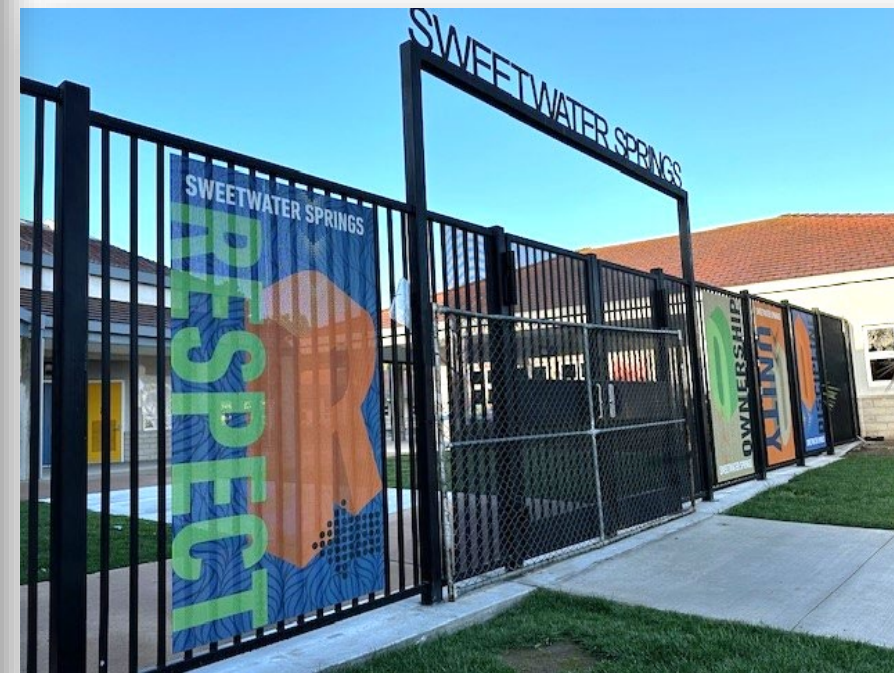
Bundle B Entrance Improvements Graphic Panels and Access Controls



Loma Elementary



Casa de Oro Elementary



Sweetwater Springs Elementary

HVAC Improvements Murdock Elementary



Demo Existing Tower Enclosure



New Cooling Tower Enclosure



Cooling Tower Installation

Bundle B Completed Marquees



Highlands



Sweetwater Springs



Casa de Oro



Murdock



Loma

Completed Trash Enclosures: Typical



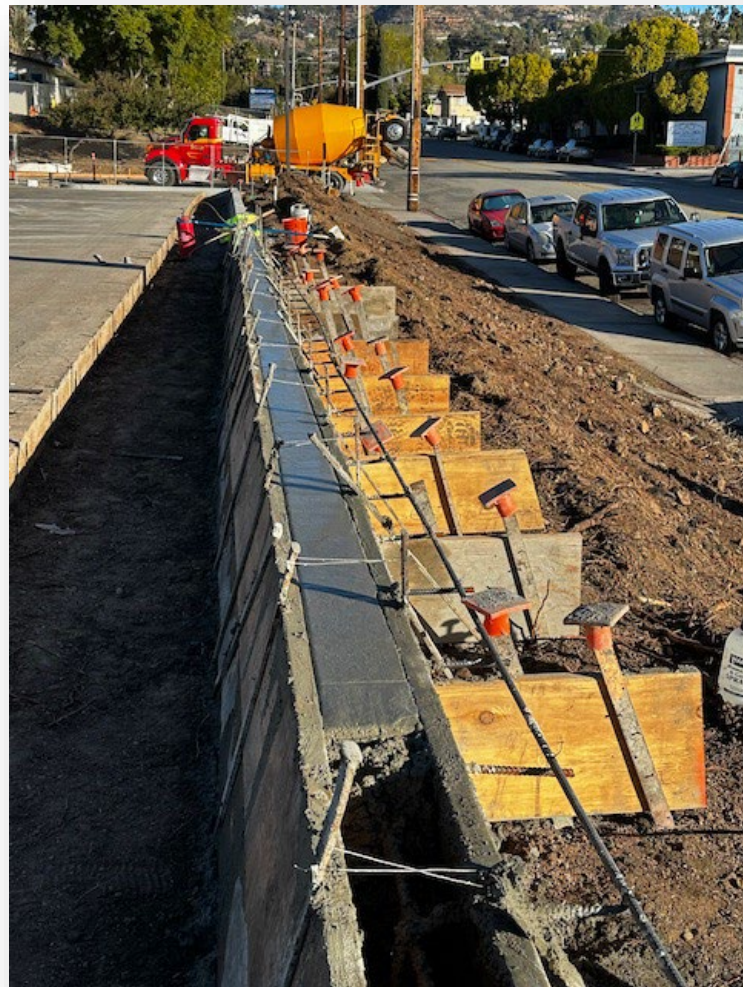
Completed Bundle B Schools
Six Sites



Operations Center Site Improvements



Rancho Elementary



Operations Center Site Improvements



Bundle D Construction

- STEAM Academy
- Avondale Elementary
- Rancho Elementary
- La Presa Elementary
- Kempton Elementary
- Bancroft Elementary



Student Drop off Improvements



Avondale Elementary



Rancho Elementary

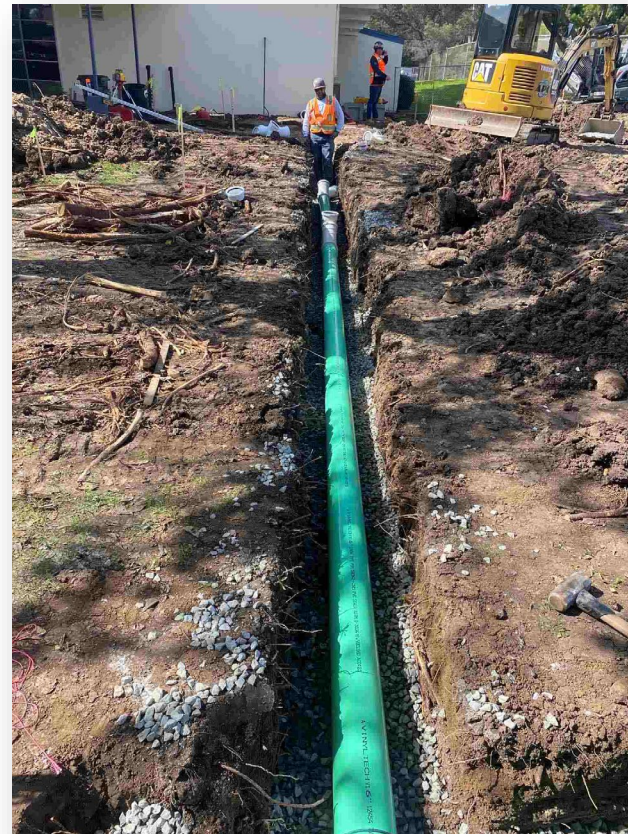
Infrastructure and Fencing



Rancho Elementary
Slope Drainage Improvements



Avondale Elementary
Security Fencing



Avondale Elementary
Storm Drains

Bundle C DSA Approval and Procurement

- La Mesa Arts Academy
- La Mesa Dale Site Improvements and New Administration Building
- Maryland Avenue Site Improvements
- Lemon Avenue Site Improvements
- Rolando Site Improvements



Bundle E Design and Construction Documents

- Parkway Sports and Health Science Academy
 - Includes New Office Building
- Fletcher Hills Elementary
- Murray Manor Elementary
- Northmont Elementary



Upcoming Activities

- **Bundle B**
 - Complete Murdock Elementary
 - Complete Operations Center
- **Bundle D**
 - Continue Construction
 - Planning/Spring and Summer Sprint Work
- **Bundle C**
 - DSA Approval
 - Start Construction
 - Planning Summer Sprint Work
- **Bundle E**
 - DSA Approval before Summer





District Major Maintenance Painting



Casa de Oro Elementary



Loma Elementary



Spring Valley Academy

Typical
21 schools

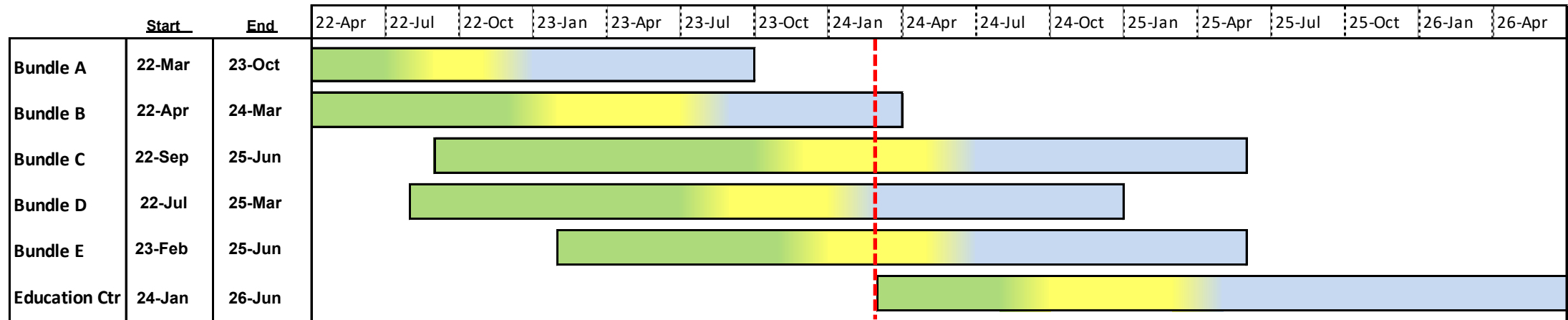
Standard
Colors

Current Program Financial Summary

Project Name	Original Budget	Current Budget	Budget Changes	Committed Costs	Expenditures	Remaining Budget	% Committed
Elementary Schools							
Avondale Site Improvements	\$2,640,853.53	\$2,147,528.43	(\$493,325.10)	\$350,593.58	\$201,793.87	\$1,796,934.85	16.33%
Bancroft Site Improvements	\$1,893,596.29	\$1,850,271.19	(\$43,325.10)	\$296,004.55	\$168,768.27	\$1,554,266.64	16.00%
Casa de Oro Site Improvements	\$4,121,685.39	\$3,904,236.87	(\$217,448.52)	\$3,735,909.37	\$3,324,324.62	\$168,327.50	95.69%
Fletcher Hills Elementary School	\$4,142,269.06	\$4,815,479.86	\$673,210.80	\$303,293.76	\$199,659.53	\$4,512,186.10	6.30%
Highlands Elementary Site Improvements	\$1,602,953.80	\$1,871,531.58	\$268,577.78	\$1,681,964.96	\$1,407,545.13	\$189,566.62	89.87%
Kempton Site Improvements	\$2,676,367.30	\$2,284,825.98	(\$391,541.32)	\$388,949.72	\$219,285.13	\$1,895,876.26	17.02%
La Mesa Dale Site Improvements	\$8,497,137.87	\$10,153,280.07	\$1,656,142.20	\$2,915,900.32	\$867,651.31	\$7,237,379.75	28.72%
La Presa Site Improvements	\$4,987,447.34	\$4,880,365.46	(\$107,081.88)	\$689,807.42	\$342,219.41	\$4,190,558.04	14.13%
Lemon Avenue Site Improvements	\$1,751,735.70	\$2,146,141.21	\$394,405.51	\$232,893.38	\$169,329.03	\$1,913,247.83	10.85%
Loma Elementary Site Improvements	\$782,071.17	\$1,251,804.75	\$469,733.58	\$1,208,701.05	\$1,012,839.58	\$43,103.70	96.56%
Maryland Avenue Site Improvements	\$1,584,913.59	\$1,669,319.10	\$84,405.51	\$224,968.15	\$156,149.71	\$1,444,350.95	13.48%
Murdock Site Improvements	\$1,659,839.77	\$2,653,103.81	\$993,264.04	\$2,320,132.06	\$1,289,372.20	\$332,971.75	87.45%
Murray Manor Site Improvements	\$2,273,753.02	\$3,273,753.02	\$1,000,000.00	\$188,666.17	\$128,134.95	\$3,085,086.85	5.76%
Northmont Site Improvements	\$5,408,296.52	\$4,751,170.54	(\$657,125.98)	\$425,749.06	\$281,064.44	\$4,325,421.48	8.96%
Rancho Site Improvements	\$2,001,411.81	\$2,108,443.46	\$107,031.65	\$295,765.52	\$162,989.64	\$1,812,677.94	14.03%
Rolando Site Improvements	\$2,755,932.66	\$4,430,338.17	\$1,674,405.51	\$324,161.46	\$231,237.58	\$4,106,176.71	7.32%
Sweetwater Springs Site Improvements	\$5,629,939.77	\$2,778,261.57	(\$2,851,678.20)	\$2,536,614.63	\$2,070,532.00	\$241,646.94	91.30%
Middle Schools							
Parkway Middle School Entrance Modernizations	\$628,359.69	\$708,585.50	\$80,225.81	\$666,620.00	\$662,467.00	\$41,965.50	94.08%
Parkway Middle School Improvements	\$16,669,083.19	\$15,307,398.74	(\$1,361,684.45)	\$1,184,006.85	\$653,574.33	\$14,123,391.89	7.73%
La Mesa Arts Academy Entrance Modernizations	\$628,359.70	\$1,080,735.50	\$452,375.80	\$1,034,801.82	\$1,032,775.82	\$45,933.68	95.75%
La Mesa Arts Academy Site Improvements	\$5,568,238.99	\$5,860,487.38	\$292,248.39	\$737,927.70	\$577,034.50	\$5,122,559.68	12.59%
Spring Valley Academy Entrance Modernizations	\$628,359.69	\$818,873.50	\$190,513.81	\$755,564.37	\$753,237.38	\$63,309.13	92.27%
Spring Valley Academy Site Improvements	\$3,389,591.21	\$3,249,384.21	(\$140,207.00)	\$2,959,545.36	\$2,598,370.48	\$289,838.85	91.08%
STEAM Academy Entrance Modernizations	\$628,359.69	\$1,487,264.50	\$858,904.81	\$1,455,009.85	\$1,453,175.86	\$32,254.65	97.83%
STEAM Academy Site Improvements	\$4,621,369.51	\$4,781,863.53	\$160,494.02	\$1,402,482.20	\$334,282.75	\$3,379,381.33	29.33%
Other District Sites							
STEAM Slope Stabilization	\$6,606,524.75	\$6,560,840.70	(\$45,684.05)	\$2,372,097.00	\$2,343,594.25	\$4,188,743.70	36.16%
Infrastructure Repairs - Districtwide	\$6,443,178.98	\$1,589,574.98	(\$4,853,604.00)	\$0.00	\$0.00	\$1,589,574.98	0.00%
Playground Improvements		\$4,853,604.00	\$4,853,604.00	\$693,847.00	\$87,882.00	\$4,159,757.00	14.30%
Energy Efficiency Projects - Districtwide	\$10,371,056.42	\$10,371,056.42	\$0.00	\$10,371,056.42	\$10,371,056.42	\$0.00	100.00%
Security Fencing		\$832,540.63	\$832,540.63	\$773,621.86	\$773,389.36	\$58,918.77	92.92%
Operations Center							
Operations Center Trailer Demolition	\$65,252.63	\$150,732.64	\$85,480.01	\$150,732.64	\$150,732.64	\$0.00	100.00%
Portable Building	\$329,545.99	\$92,655.75	(\$236,890.24)	\$92,655.75	\$92,655.75	\$0.00	100.00%
Operations Center Site Improvements	\$1,908,207.11	\$2,541,510.38	\$633,303.27		\$952,449.09		
Education Service Center							
Education Center Site Improvements	\$6,248,616.17	\$6,248,616.17	\$0.00	\$0.00	\$0.00	\$6,248,616.17	0.00%
Program Common Costs & Contingencies							
Program Administration	\$9,855,691.69	\$7,560,922.64	\$0.00	\$3,274,608.30	\$2,496,986.35	\$4,286,314.34	43.31%
Program Contingency	\$3,000,000.00	\$1,997,972.89	(\$1,002,027.11)	\$0.00	\$0.00	\$1,997,972.89	0.00%
Program Reserve	\$4,000,000.00	\$4,000,000.00	\$0.00	\$0.00	\$0.00	\$4,000,000.00	0.00%
Program Totals	\$136,000,000.00	\$137,064,475.13	\$1,064,475.13	\$48,799,648.64	\$37,566,560.38	\$88,264,826.49	35.60%



Schedule



Design
 DSA & Bidding Award
 Construction & Closeout
 Current Date



Local Labor Participation (Bundle B)

Company	City	County
Casper Company	Spring Valley	In Local County
Brady Company	La Mesa	In Local County
ACCO Engineered Systems	San Diego	In San Diego County
Western Rim	Escondido	In San Diego County
Inline Fence & Rail Company	Lakeside	In San Diego County
FenceCorp	Oceanside	In San Diego County
Pierre Landscaping	San Diego	In San Diego County
South Bay Fence	Chula Vista	In San Diego County
Kirk Paving	Lakeside	In San Diego County
Ace Electric	San Diego	In San Diego County
Precision Electric	Lakeside	In San Diego County
Elite Earthworks	Murietta	Out of County



Local Labor Participation (Bundle D)

Company	City	County
New Dimension Masonry	San Diego	San Diego County
Pacific Flagpole Service	San Diego	San Diego County
Advance Plumbing	El Cajon	San Diego County
Brady West	La Mesa	In Local County
Cement Cutting	San Diego	San Diego County
Core Contracting	Vista	San Diego County
Pierre Landscaping	San Diego	San Diego County
Premier Sign	Riverside	Out of County
Sylvester Roofing Company	Escondido	San Diego County
Ace Electric	San Diego	San Diego County
Team West	Bloomington	Out of County
West Coast Iron	Spring Valley	In Local County
Western Sign & Awning	Chula Vista	San Diego County
MC Painting	Oceanside	San Diego County
Johnston Tractor	Alpine	San Diego County
HSCC	Lakeside	San Diego County



Measure V Bond Program Update

Questions.....