

LA MESA-SPRING VALLEY SCHOOL DISTRICT

Business Services Department

4750 Date Avenue

La Mesa CA 91942

BID NUMBER FB #24/25-009

DISTRICTWIDE PLUMBING

ADDENDUM 1

May 23, 2025

THIS ADDENDUM IS ISSUED AS ADDITIONAL INFORMATION AND/OR AS A CHANGE IN SPECIFICATIONS OR INSTRUCTIONS TO ALL PROSPECTIVE BIDDERS INTERESTED IN THE ABOVE-MENTIONED REQUEST FOR PROPOSAL.

ITEM 1 Responses to requested information.

No questions or responses were received during the bid process.

ITEM 2 Additional specifications

DOUBLE CHECK VALVES ONLY

The district is specifying that ONLY double check valves should be installed. No backflow preventers. See the brand or equal specification in the original bid documents.

UNION

A union should be added at the location of each double check valve installation.

CONCRETE PAD AND CAGE

A concrete pad and a cage with rounded edges should be installed at the location of each double check valve installation.

LIMITED THRUST BLOCK INSTALLATIONS

Whenever a double check valve is installed after a main backflow preventer (1 per school), a thrust block should be added and the thrust block should measure 1 foot by 1 foot by 1 foot.

At only Casa De Oro Elementary School, a 1 foot by 1 foot by 1 foot thrust block should be installed at each of the 5 double check valves listed for Casa De Oro in the bid documents.

SIZING UP IF NECESSARY

On occasion, the District may have a pipe that is measured in a ¼ inch interval. Whenever that is the case, the double check valve installation should size up. For example, a 1 and ¼ inch pipe should be sized up to a 1

LA MESA-SPRING VALLEY SCHOOL DISTRICT

Business Services Department

4750 Date Avenue

La Mesa CA 91942

BID NUMBER FB #24/25-009

DISTRICTWIDE PLUMBING

and ½ inch double check valve; a 2 and ¼ inch pipe should be sized up to a 2 and ½ inch double check valve, and so on.

20 MM TAPE OR INSULATION

If either the thrust block or any concrete slab touches copper pipe, then (a 20 millimeter or more) tape / insulation should be wrapped around the pipe.

PUNCHWALK

Contractors will be required to engage in a punchwalk with the project manager.

ITEM 3 Bid Form

Three sites were removed from the bid and are identified below. Bidders should submit the original bid form and leave the three removed schools blank.

Site / Location	Bid Price
Avondale	
Bancroft	
Casa De Oro	
Fletcher Hills	
Highlands	
La Mesa Dale	
La Presa	

LA MESA-SPRING VALLEY SCHOOL DISTRICT

Business Services Department

4750 Date Avenue

La Mesa CA 91942

BID NUMBER FB #24/25-009

DISTRICTWIDE PLUMBING

Lemon Ave	
Loma	DO NOT BID
Murdock	
Rancho	
Sweetwater Springs	DO NOT BID
La Mesa Arts Academy	
STEAM Academy	DO NOT BID
Spring Valley Academy	

ITEM 4

Conditions Involving Concrete

Although these double check valves will be placed typically in landscape areas, the following locations involve concrete:

Casa De Oro Double Check Valve Location 4 (on map) - To install a double check valve in this location, the contractor must reroute pipe outside of an 8 inch thick concrete vault and install the double check valve, concrete slab and cage next to the vault.

Highlands Double Check Valve Location 4 (on map) - To install a double check valve in this location, the contractor must excavate below a current concrete slab to install the double check valve and cage and must also re-pour any area of the concrete slab that was damaged.

Highlands Double Check Valve Location 15 (on map) - To install a double check valve in this location, the contractor must located the double check valve in a safe, out-of-the-way location at the base of a hill, many feet away from the irrigation boxes.

LA MESA-SPRING VALLEY SCHOOL DISTRICT

Business Services Department

4750 Date Avenue

La Mesa CA 91942

BID NUMBER FB #24/25-009

DISTRICTWIDE PLUMBING

ITEM 5 Line Maps and Double Check Valve Installation Locations

See attached.

ITEM 6 Sign In Sheet

See attached.

END OF DOCUMENT

Highland Elementary - 3131 S. Barcelona, Spring Valley, CA 91941

FIELD SURVEY DATE:
April 16, 2025

FIELD SURVEY ATTENDEES:
Miguel Gonzalez — NVS
Mario Lopez — LMSV
Lee Cirket — LMSV
Jason Junker — LMSV

NOTES:

1. Vegetated areas shown in purple dashed line are supplied by irrigation system. All other vegetated areas are supplied by potable system.

2. All buildings are confirmed to be supplied by potable system.

3. Numbers and/or numbers with letters shown within irrigation zones represent the control zones per the irrigation control boxes (ex. 1 or 1A). Letter 'M' represents local manual control for the zone and no corresponding control control box.

LEGEND

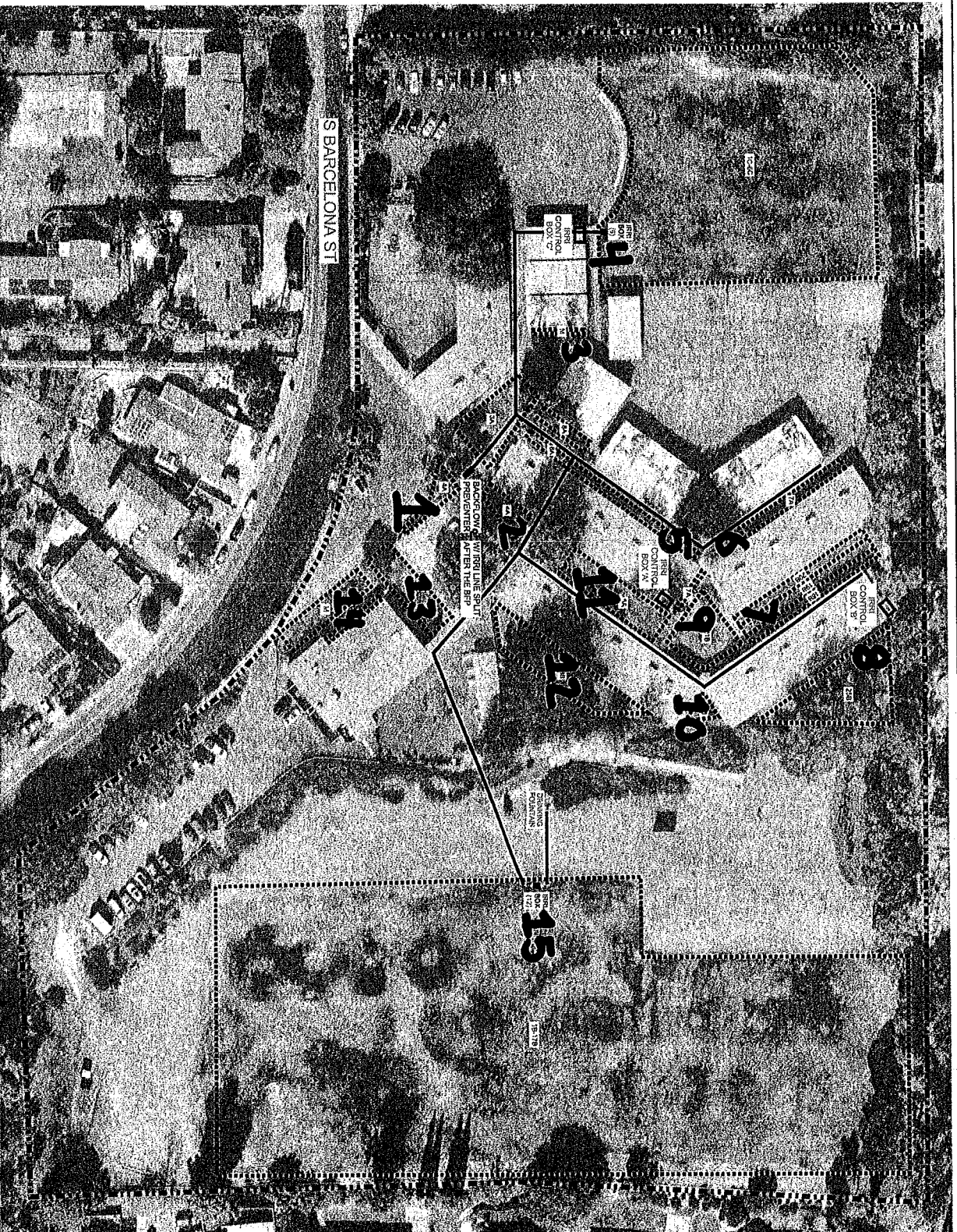
POTABLE LINE
IRRIGATION LINE
IRRIGATED BY POTABLE
IRRIGATED BY IRRIGATION
POTABLE BACKFLOW
IRRIGATION BACKFLOW
IRRIGATION BOX
APPROX. PROPERTY LINE



DATE: 04/17/2025

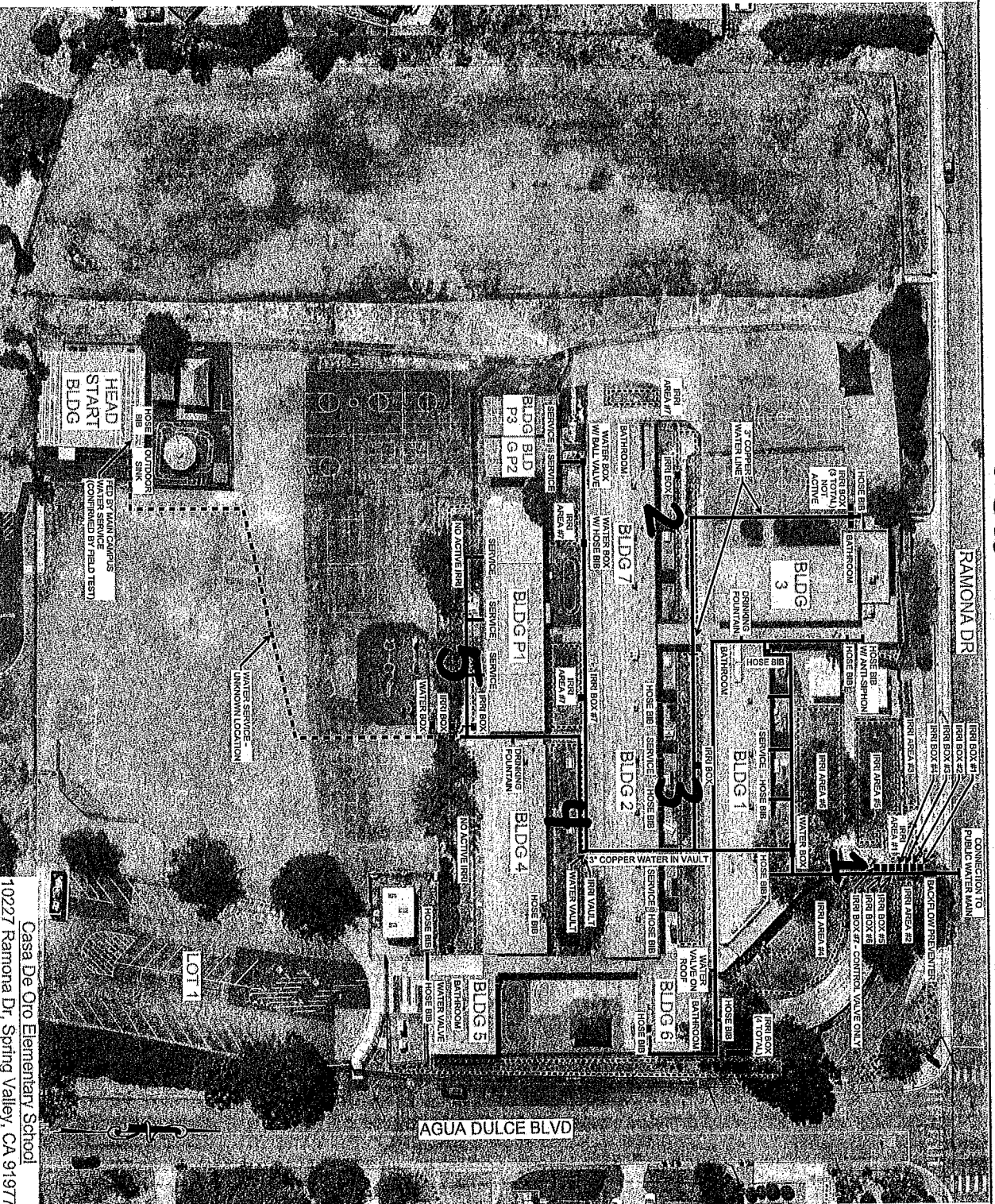
NVS

NOTE: WATER AND IRRIGATION LINES ARE SHOWN SCHEMATICALLY ONLY. NVS DOES NOT GUARANTEE THE LOCATIONS SHOWN.



5

Casa de Oro ES



Casa De Oro Elementary School
10227 Ramona Dr, Spring Valley, CA 91977

LEGEND
POTABLE WATER
IRRIGATION

FIELD SURVEY
ATTENDEES:
JON ROWLAND
MIGUEL GONZALEZ
LEE
SALVATORE MARINO
JASON JABBER

FIELD SURVEY
DATE:
JULY 16, 2024

DATE: 07/18/2024
N V 5

15

Spring Valley Academy - 3900 Conrad Drive, Spring Valley, CA 91977



FIELD SURVEY DATE:
April 16, 2025

FIELD SURVEY ATTENDEES:
Miguel Gonzalez — NV/S
Mario Lopez — LMSV
Lee Cirket — LMSV
Jason Junker — LMSV

NOTES:

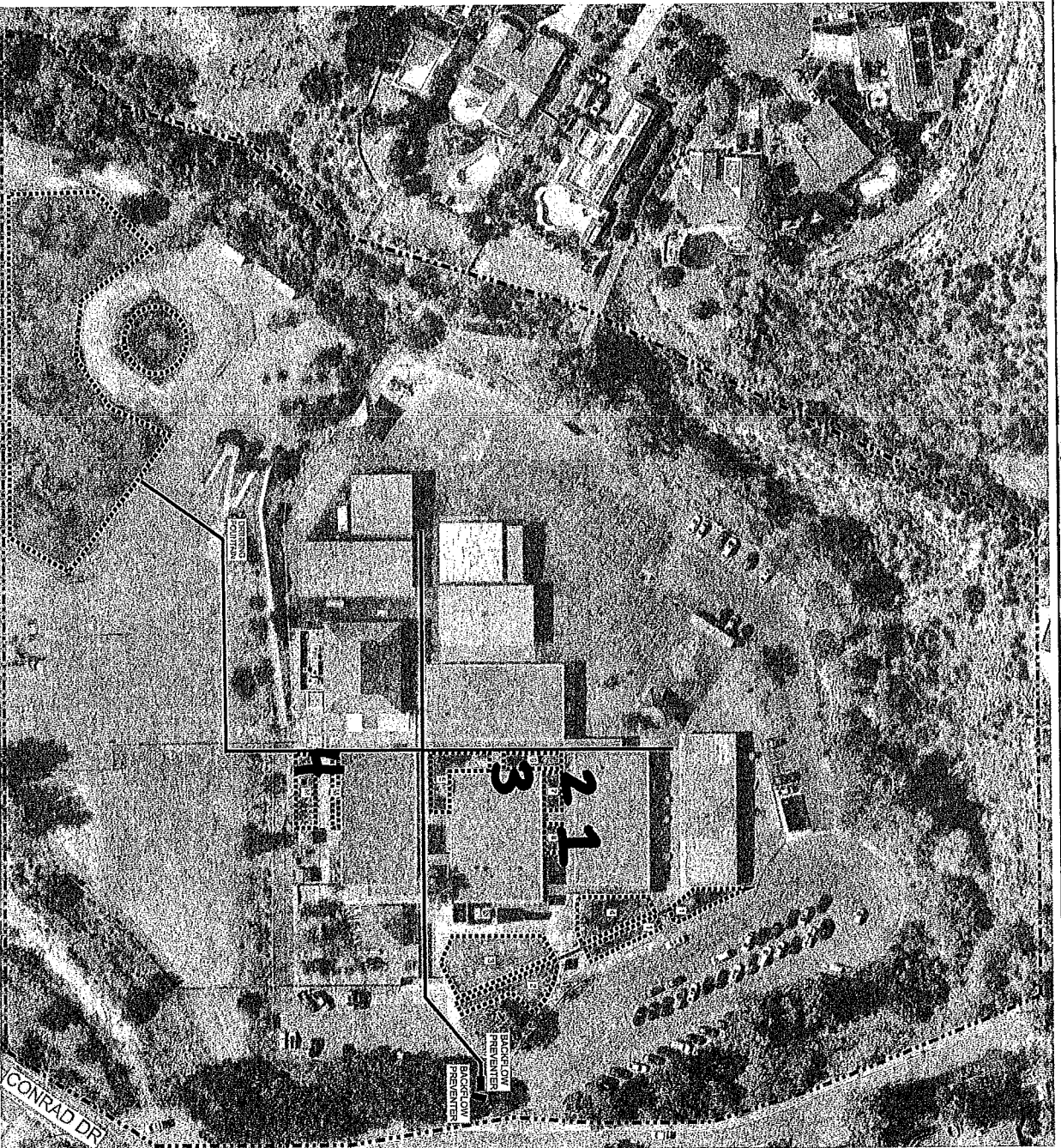
1. All other irrigated areas are supplied by potable system.
2. All buildings are supplied by potable system.

LEGEND

POTABLE LINE	—
IRRIGATION LINE	—
IRRIGATED BY POTABLE	—
POTABLE BACKFLOW	—
IRRIGATION BACKFLOW	—
IRRIGATION BOX	—
APPROX. PROPERTY LINE	---

NOTE: WATER AND IRRIGATION LINES ARE SHOWN SCHEMATICALLY ONLY. NV/S DOES NOT GUARANTEE THE LOCATIONS SHOWN.

Murdock Elementary - 4354 Conrad Drive, La Mesa, CA 91941



NOTE: WATER AND IRRIGATION LINES ARE SHOWN SCHEMATICALLY ONLY. NV6 DOES NOT GUARANTEE THE LOCATIONS SHOWN.

FIELD SURVEY DATE:
April 16, 2025

FIELD SURVEY ATTENDEES:
Miguel Gonzalez — NV5
Mario Lopez — LMSV
Lee Cirkel — LMSV
Jason Junker — LMSV

NOTES:

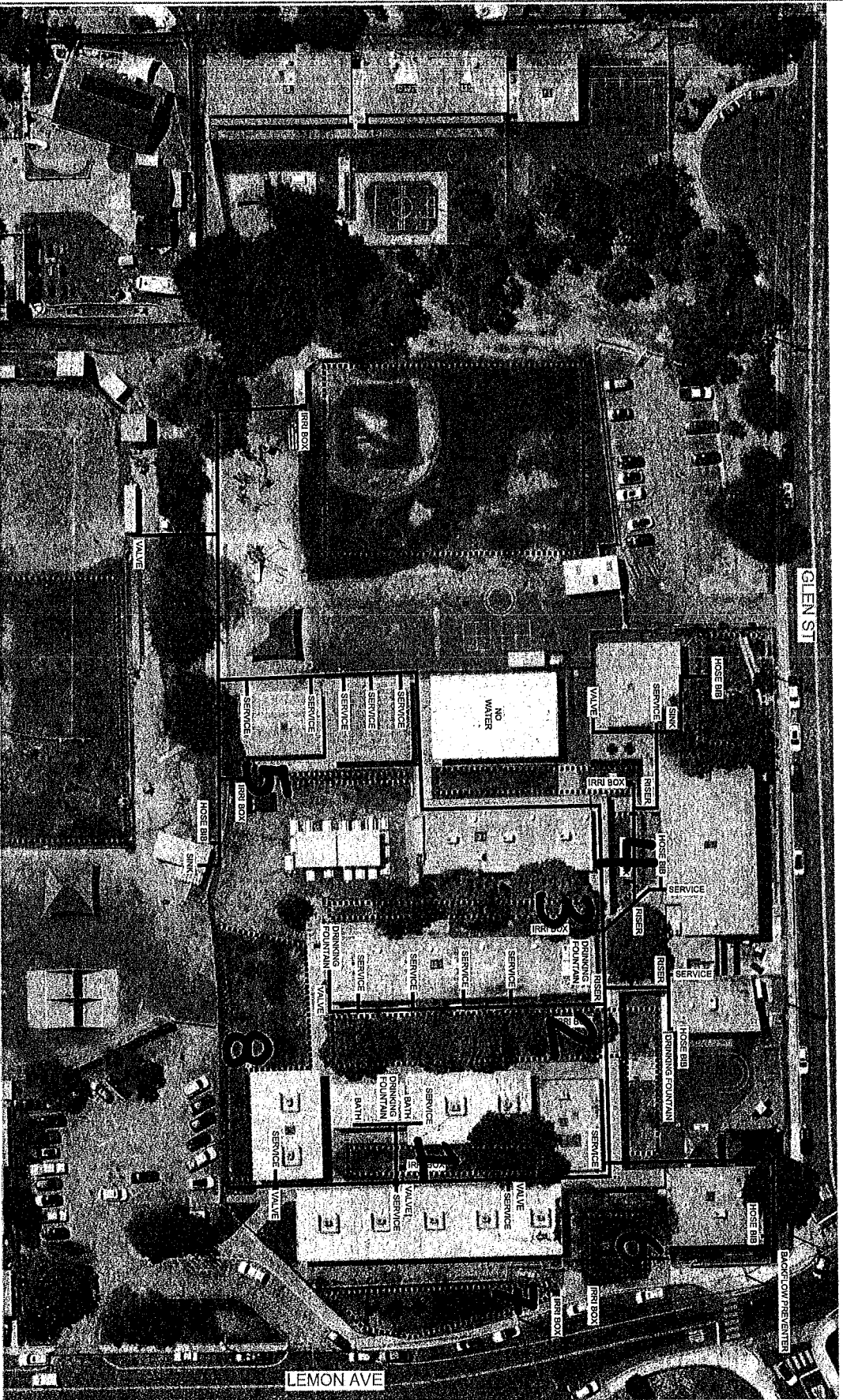
1. Vegetated areas shown in purple dashed line are supplied by irrigation system. All other vegetated areas are supplied by potable system.
2. All buildings are confirmed to be supplied by potable system.

LEGEND

POTABLE LINE	—
IRRIGATION LINE	—
IRRIGATED BY POTABLE	—
POTABLE BACKFLOW	—
IRRIGATION BACKFLOW	—
IRRIGATION BOX	■
APPROX. PROPERTY LINE	---



● Lemon Ave Elementary - 8787 Lemon Ave, La Mesa, CA. 91941



NOTE: WATER AND IRRIGATION LINES ARE SHOWN SCHEMATICALLY ONLY. NVG DOES NOT GUARANTEE THE LOCATIONS SHOWN.

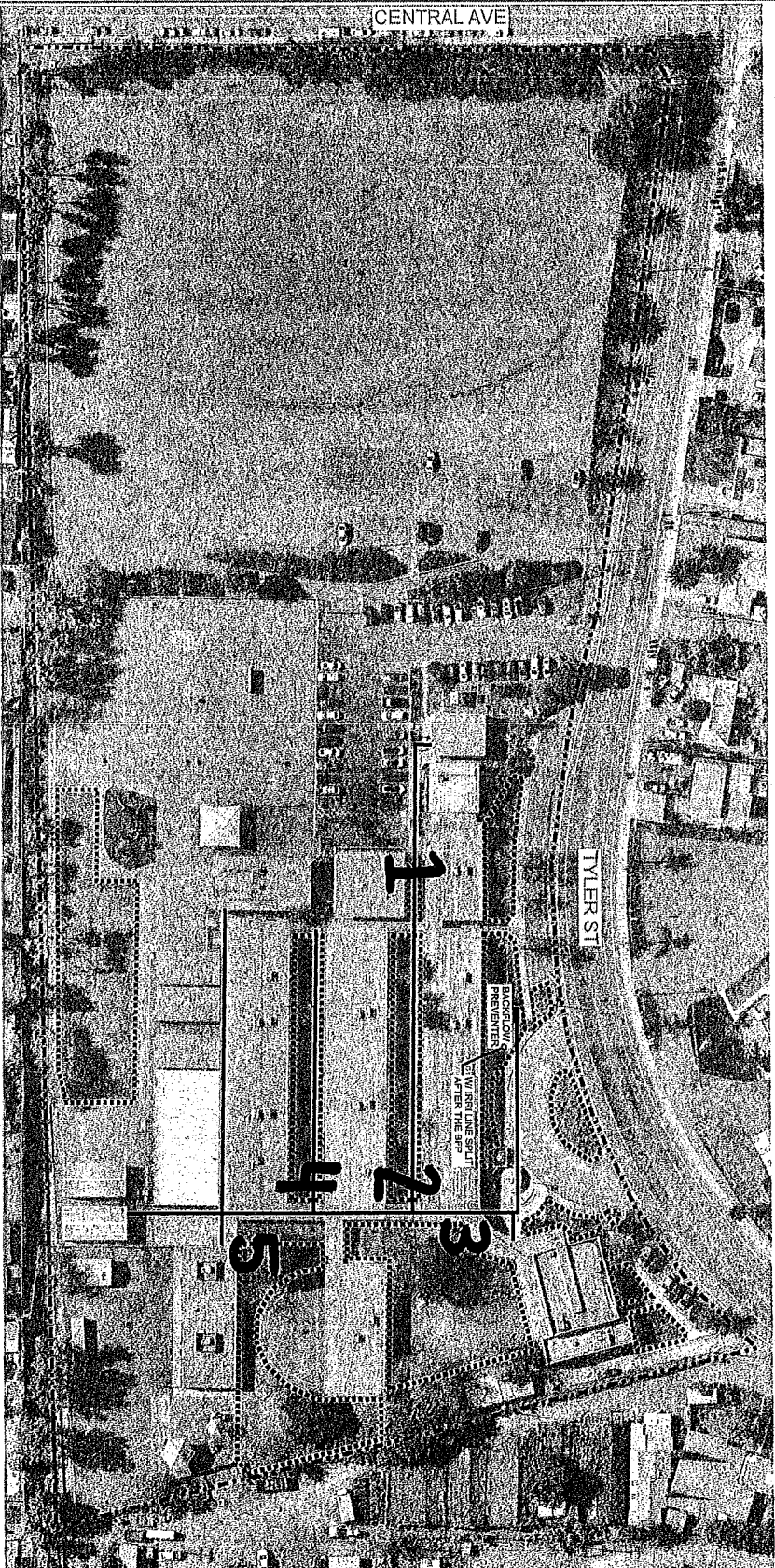
LEGEND
POTABLE LINE
IRRIGATION LINE
IRRIGATED AREA

FIELD SURVEY
ATTENDEES:
Miguel Gonzalez
Jason Junker

FIELD SURVEY DATE:
October 9, 2024

Bancroft Elementary - 8805 Tyler St. Spring Valley, CA 91977

5



FIELD SURVEY DATE:
April 7, 2025

FIELD SURVEY ATTENDEES:
Miguel Gonzalez — NVS
Lee Cirket — LMSV
Jason Junker — LMSV

NOTES:

1. Vegetated areas shown in purple dashed line are supplied by irrigation system. All other vegetated areas are supplied by potable system.
2. All buildings are confirmed to be fed by potable system.

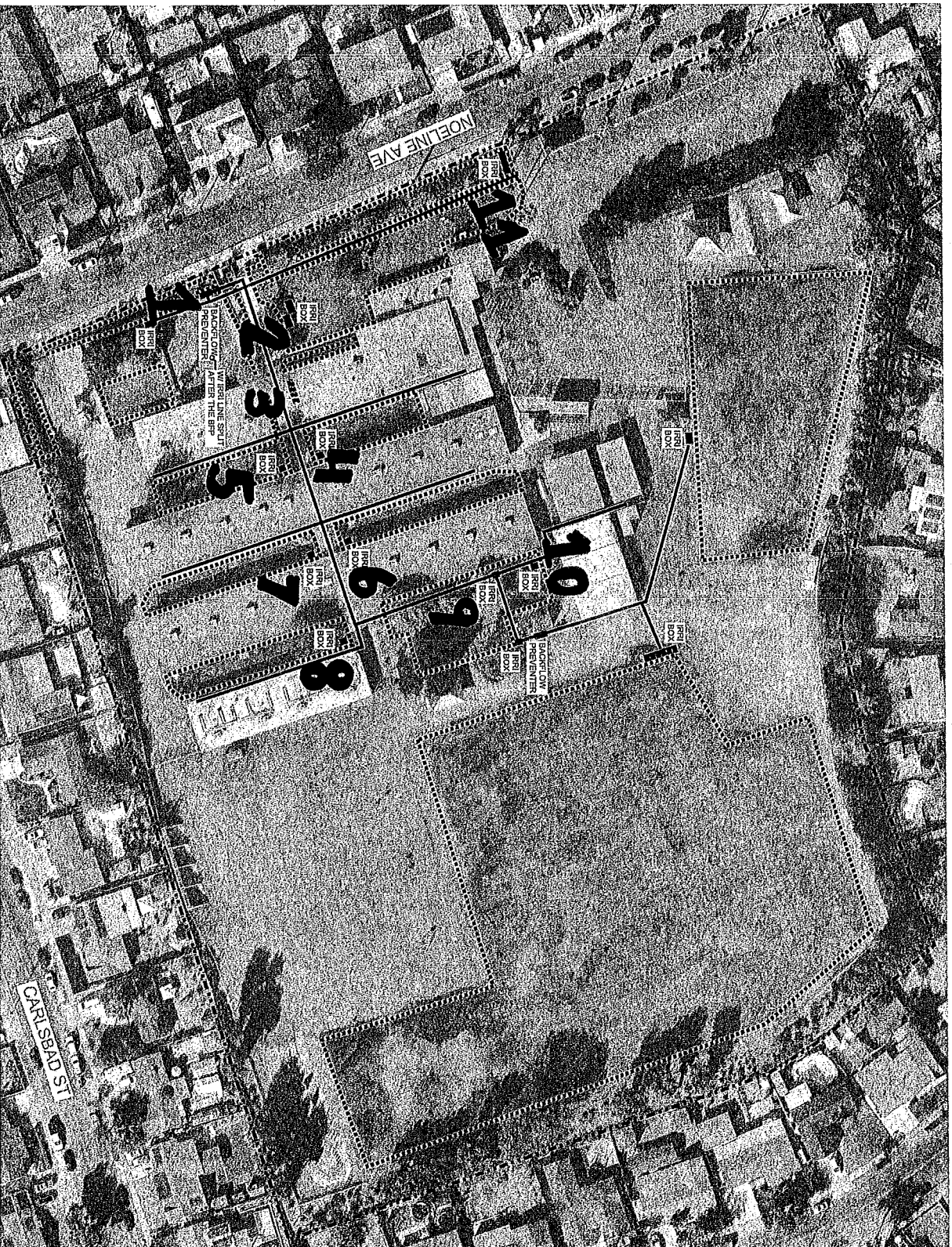
LEGEND

- POTABLE LINE ———
- IRRIGATION LINE - - - - -
- IRRIGATED BY POTABLE ———
- IRRIGATED BY IRRIGATION - - - - -
- POTABLE BACKFLOW ———
- IRRIGATION BACKFLOW - - - - -
- IRRIGATION BOX ■ ■ ■
- APPROX. PROPERTY LINE - - - - -

NOTE: WATER AND IRRIGATION LINES ARE SHOWN SCHEMATICALLY ONLY. NVS DOES NOT GUARANTEE THE LOCATIONS SHOWN.

DATE: 04/11/2025
NVS

Rancho Elementary - 8845 Noeline Ave. Spring Valley, CA 91977



NOTE: WATER AND IRRIGATION LINES ARE SHOWN SCHEMATICALLY ONLY. NVS DOES NOT GUARANTEE THE LOCATIONS SHOWN.

FIELD SURVEY DATE:
April 7, 2025

FIELD SURVEY ATTENDEES:
Miguel Gonzalez — NVS
Lee Clirket — LMSV
Jason Junker — LMSV

NOTES:

1. Vegetated areas shown in purple dashed line are supplied by irrigation system. All other vegetated areas are supplied by potable system.
2. All buildings are confirmed to be fed by portable system.

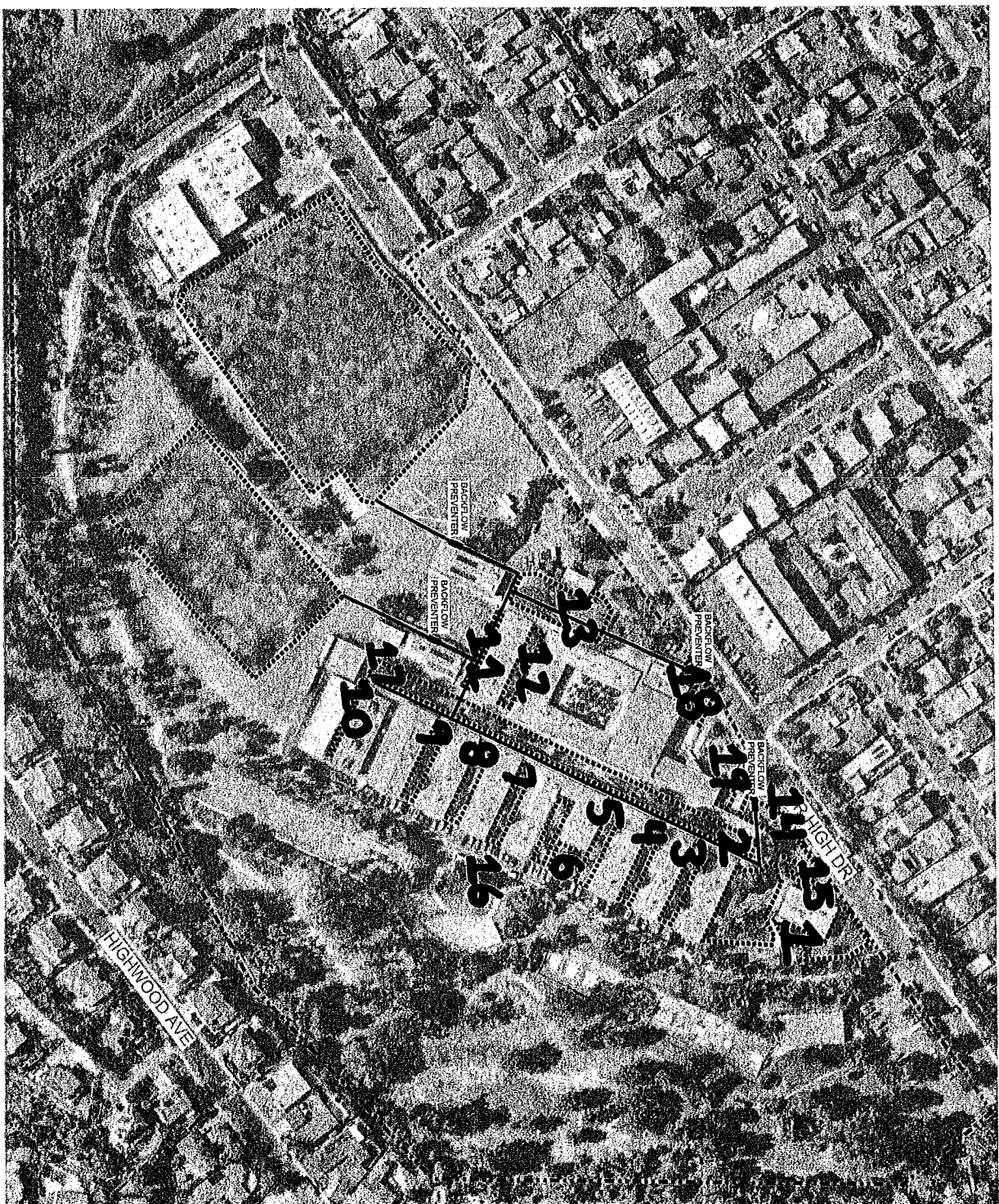
LEGEND

- POTABLE LINE
- IRRIGATION LINE
- IRRIGATED BY POTABLE
- IRRIGATED BY IRRIGATION
- POTABLE BACKFLOW
- IRRIGATION BACKFLOW
- IRRIGATION BOX
- APPROX. PROPERTY LINE

DATE: 04/11/2025

NVS

La Mesa Arts Academy - 4200 Parks Ave, La Mesa, CA 91941



FIELD SURVEY DATE:
April 16, 2025

FIELD SURVEY ATTENDEES:
Miguel Gonzalez — NVS
Mario Lopez — LMSV
Lee Cirket — LMSV
Jason Junker — LMSV

NOTES:

1. Vegetated areas shown in purple dashed line are supplied by irrigation system. All other vegetated areas are supplied by potable system.
2. All buildings are confirmed to be supplied by potable system.

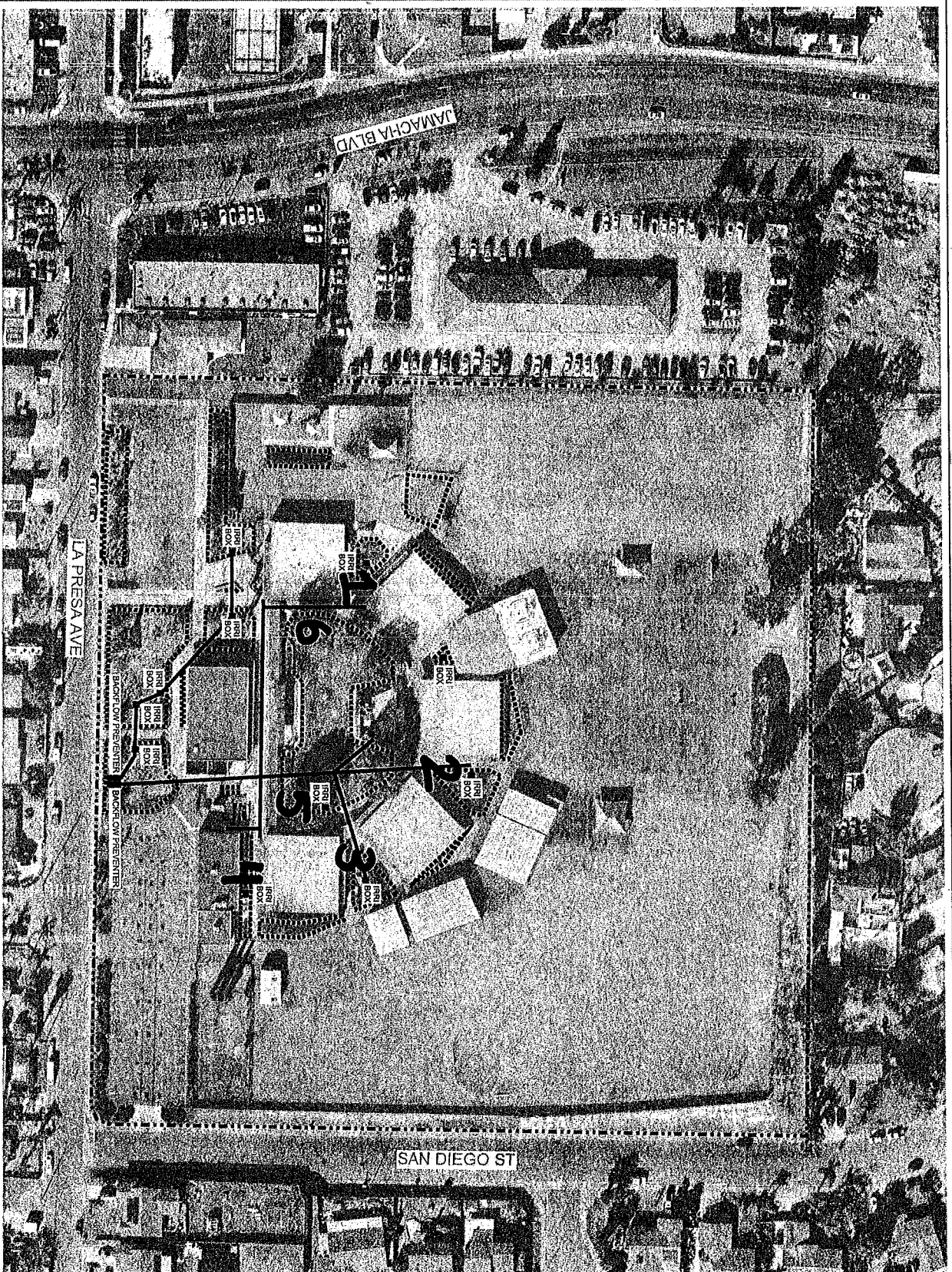
LEGEND

- POTABLE LINE —————
- IRRIGATION LINE - - - - -
- IRRIGATED BY POTABLE ————
- IRRIGATED BY IRRIGATION - - - - -
- POTABLE BACKFLOW ————
- IRRIGATION BACKFLOW - - - - -
- IRRIGATION BOX ■■■■
- APPROX. PROPERTY LINE - - - - -

NOTE: WATER AND IRRIGATION LINES ARE SHOWN SCHEMATICALLY ONLY. NVS DOES NOT GUARANTEE THE LOCATIONS SHOWN.

6

La Presa Elementary - 519 La Presa Ave. Spring Valley, CA 91977



NOTE: WATER AND IRRIGATION LINES ARE SHOWN SCHEMATICALLY ONLY. NVS DOES NOT GUARANTEE THE LOCATIONS SHOWN.

FIELD SURVEY DATE:
April 7, 2025

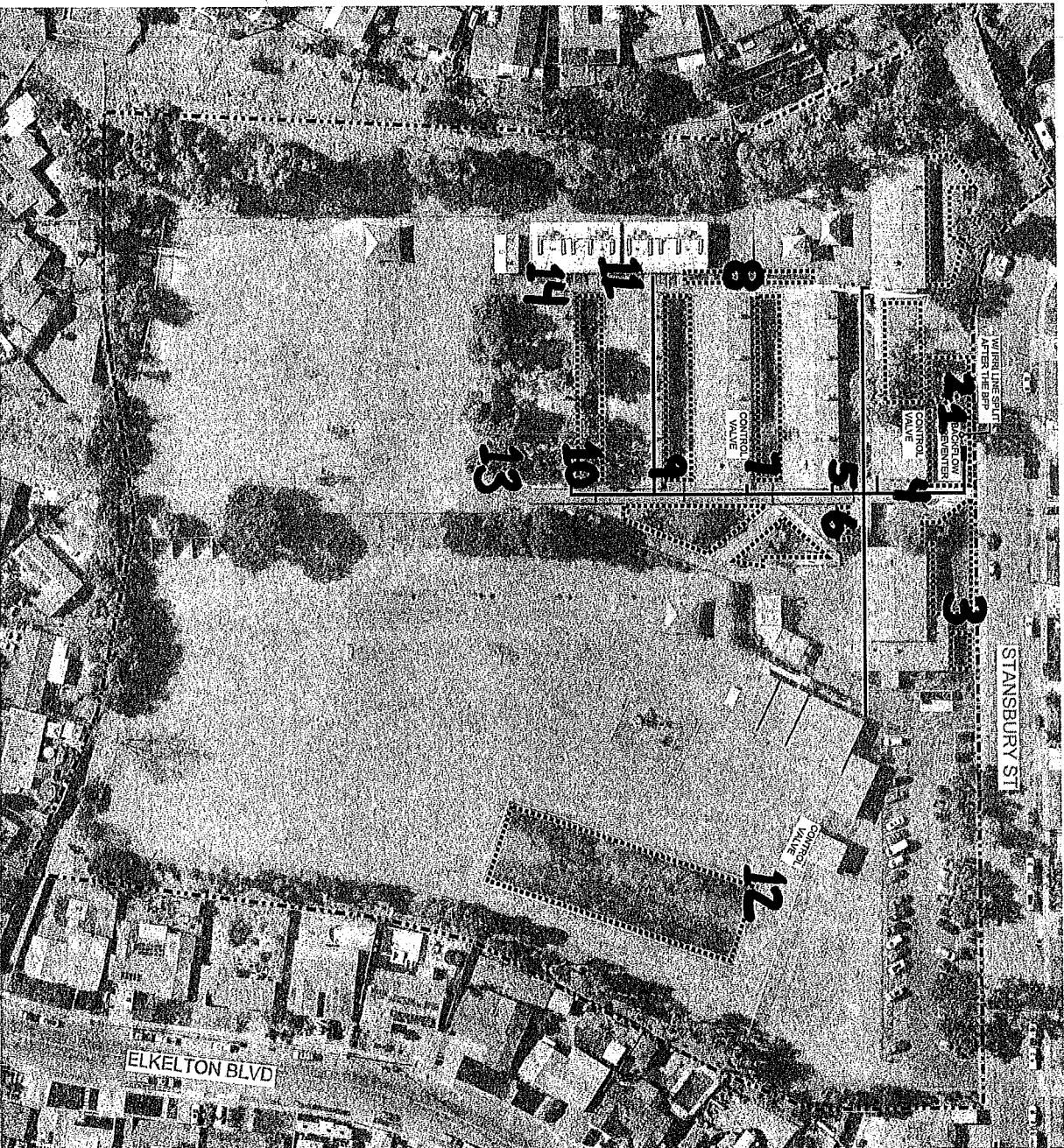
FIELD SURVEY ATTENDEES:
Miguel Gonzalez — NVS
Lee Cirket — LMSV
Jason Junker — LMSV

NOTES:
1. Vegetated areas shown in purple dashed line are supplied by irrigation system. All other vegetated areas are supplied by potable system.
2. All buildings are confirmed to be fed by potable system.

LEGEND
POTABLE LINE
IRRIGATION LINE
IRRIGATED BY POTABLE
IRRIGATED BY IRRIGATION
POTABLE BACKFLOW
IRRIGATION BACKFLOW
IRRIGATION BOX
APPROX. PROPERTY LINE

DATE: 04/11/2025
NVS

Avondale Elementary - 8401 Stansbury St. Spring Valley, CA 91977



FIELD SURVEY DATE:
April 7, 2025

FIELD SURVEY ATTENDEES:
Miguel Gonzalez — NVS
Lee Cirket — LMSV
Jason Junker — LMSV

- NOTES:
1. Vegetated areas shown in purple dashed line are supplied by irrigation system. All other vegetated areas are supplied by potable system.
 2. All buildings are confirmed to be fed by potable system.

LEGEND

- POTABLE LINE ———
- IRRIGATION LINE - - - - -
- IRRIGATED BY POTABLE
 - IRRIGATION BACKFLOW ———
 - IRRIGATION BACKFLOW - - - - -
 - IRRIGATION BOX ■ ■ ■
 - APPROX. PROPERTY LINE - · - · -

NOTE: WATER AND IRRIGATION LINES ARE SHOWN SCHEMATICALLY ONLY. NVS DOES NOT GUARANTEE THE LOCATIONS SHOWN.

La Mesa Date - 4370 Parks Ave, La Mesa, CA 91941

FIELD SURVEY DATE:
April 16, 2025

FIELD SURVEY ATTENDEES:

Miguel Gonzalez — NV5
Mario Lopez — LMSV
Lee Cirket — LMSV
Jason Junker — LMSV

NOTES:

1. Vegetated areas shown in purple dashed line are supplied by irrigation system. All other vegetated areas are supplied by potable system.

2. All buildings are confirmed to be supplied by potable system.

LEGEND

POTABLE LINE	=====
IRRIGATION LINE	-----
IRRIGATED BY POTABLE
IRRIGATED BY IRRIGATION
POTABLE BACKFLOW	■
IRRIGATION BACKFLOW	■
IRRIGATION BOX	■ ■
APPROX. PROPERTY LINE	- - - - -

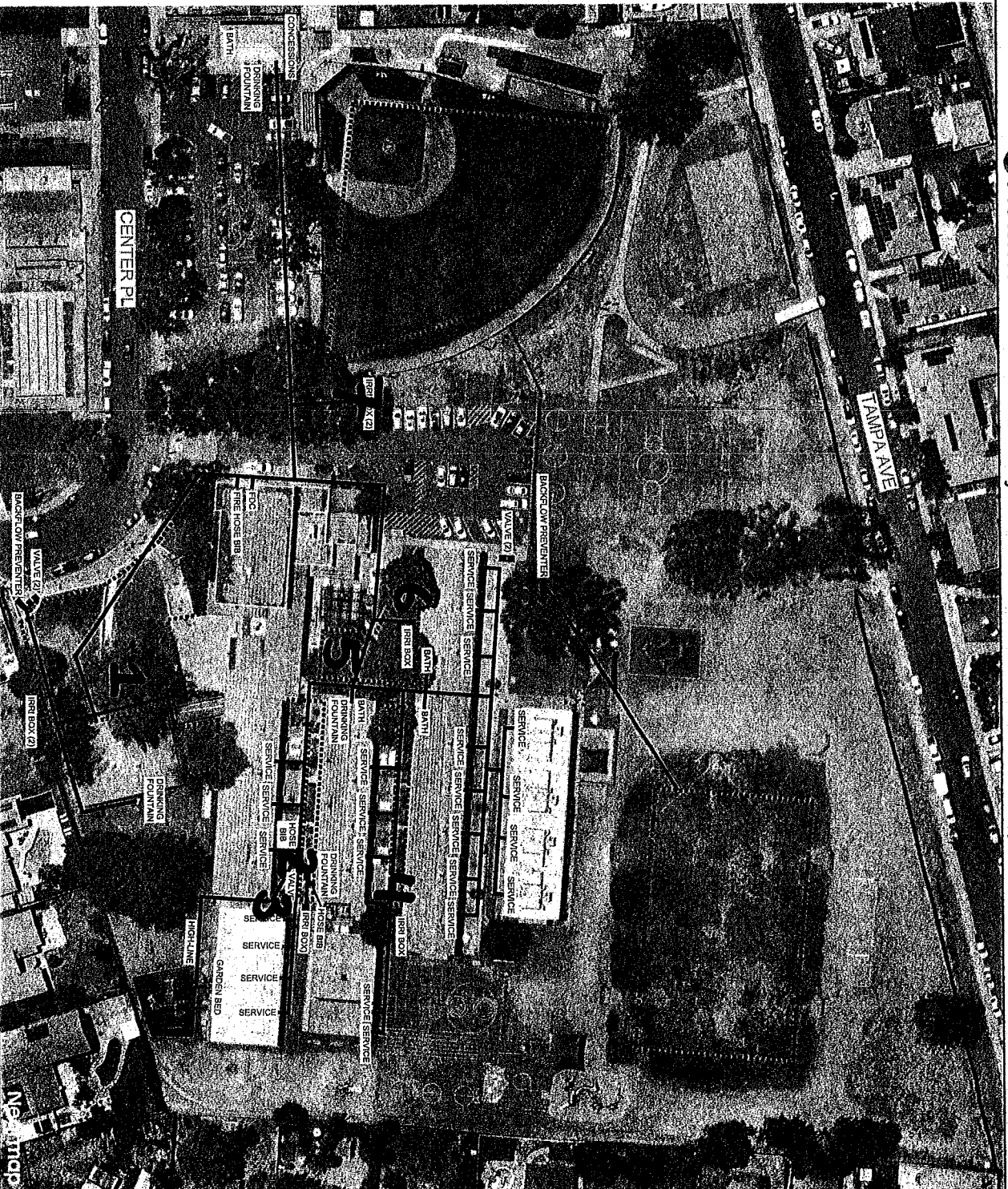


NOTE: WATER AND IRRIGATION LINES ARE SHOWN SCHEMATICALLY ONLY. NV5 DOES NOT GUARANTEE THE LOCATIONS SHOWN.



DATE: 04/17/2025

Fletcher Hills Elementary - 2330 Center Place, El Cajon, CA 92020



NOTE: WATER AND IRRIGATION LINES ARE SHOWN SCHEMATICALLY ONLY. NGS DOES NOT GUARANTEE THE LOCATIONS SHOWN.

- LEGEND
- POTABLE LINE ———
 - IRRIGATION LINE ———
 - IRRIGATED AREA

FIELD SURVEY
ATTENDEES:
Miguel Gonzalez
Jason Junker

FIELD SURVEY DATE:
October 8, 2024



DATE: 10/22/2024

NV5

SigninSheet

name

email

company

1. ART MORALES

AMERIMEXPL.AOL.COM

AMERI-MEX PLS

2. Michael Castro

Planroom@hpsmechanical.com

HPS

3. Grant Eitzer

M. Castro@hpsmechanical.com

vermeltzerplumbing.com

Eitzer Plumbing

4 JESUS MORALES

JESUS.MORALES

JAMERIMEXPL.COM AMERI-MEX