

Measure V Bond Program Update

La Mesa-Spring Valley Schools

Presentation to the Citizens' Bond Oversight Committee

August 20, 2025

Daniel Young

Executive Director, Facilities Planning and Construction

Program Update Overview

- Current Project Status
- Projects In Planning
- Financial Summary
- Schedule Summary
- Local Labor Participation





Bundle A Construction

- **Bundle A** (*Complete*)
 - Parkway - Entry Improvements
 - Spring Valley Academy - Entry Improvements
 - STEAM Academy - Entry Improvements
 - La Mesa Arts Academy - Entry Improvements
 - Steam Slope Stabilization
 - STEAM Plaster Work



Bundle B Construction

- **Bundle B** (*Complete*)
 - Casa de Oro
 - Spring Valley Academy
 - Highlands Elementary
 - Sweetwater Springs Elementary
 - Murdock Elementary
 - Operations Center Improvements
 - Loma Elementary

Bundle C Construction

- **Bundle C:**

- | | |
|-------------------|---------------------------|
| • Lemon Avenue | Construction 85% Complete |
| • La Mesa Dale | Construction 90% Complete |
| • Maryland Avenue | Construction 92% Complete |
| • Rolando | Construction 94% Complete |
| • LMAAC | Construction 97% Complete |



La Mesa Dale Elementary – Administration Bldg.



Bundle C Construction Lemon Ave

6



New Perimeter Fencing



New Play Structure



Secure Fencing



Bundle C Construction La Mesa Dale

7



New Monument Sign



Pickup/Drop off lane and new parking lot

Bundle D Construction

- Projects

- | | |
|---------------------------|------------------------------------|
| • Avondale | Complete |
| • Rancho | Complete |
| • Bancroft | Complete |
| • Kempton | Complete |
| • La Presa | Complete |
| • STEAM Site Improvements | |
| • Phase 1 | Complete |
| • Phase 2 | Construction Started:
June 2025 |



STEAM Academy
Upper Field



Bundle D Construction STEAM Academy Phase 2

9



New ADA-compliant restrooms



New ADA-compliant path of travel

Bundle E Construction

- Parkway Portables Complete
- Fletcher Hills Complete
- Northmont Complete
- Murray Manor Complete
- Parkway Academy 80% Complete



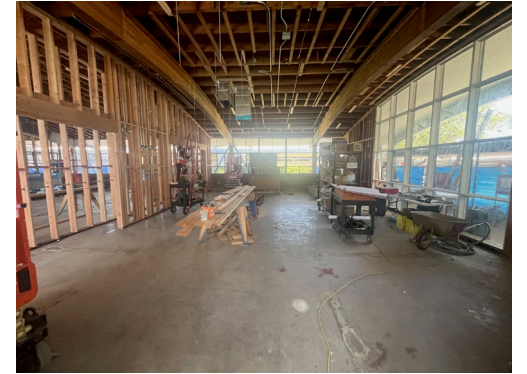
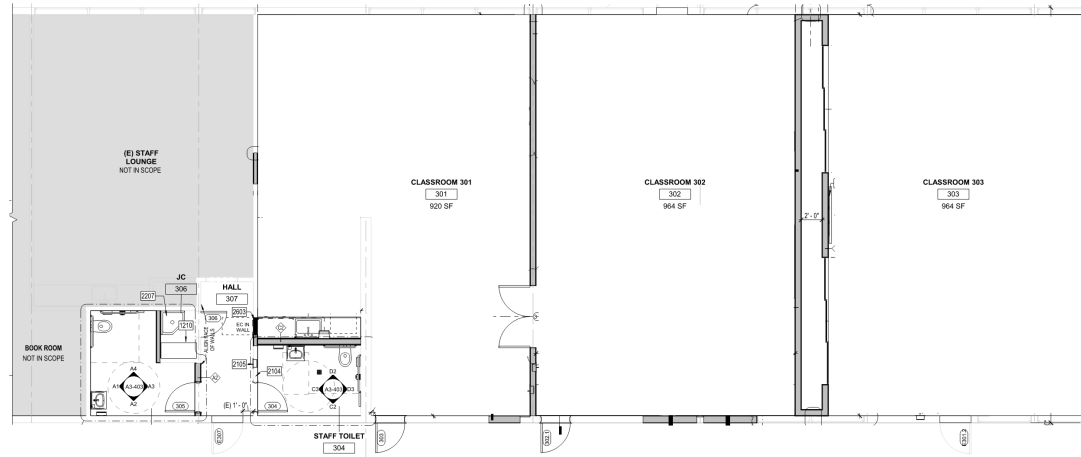
Parkway Administration Workroom



Bundle E Construction Parkway Academy

11

New Administration Building, Single Point of Entry, and Classroom Modernization



Play Structure/Shade Safety Improvements

New Playgrounds

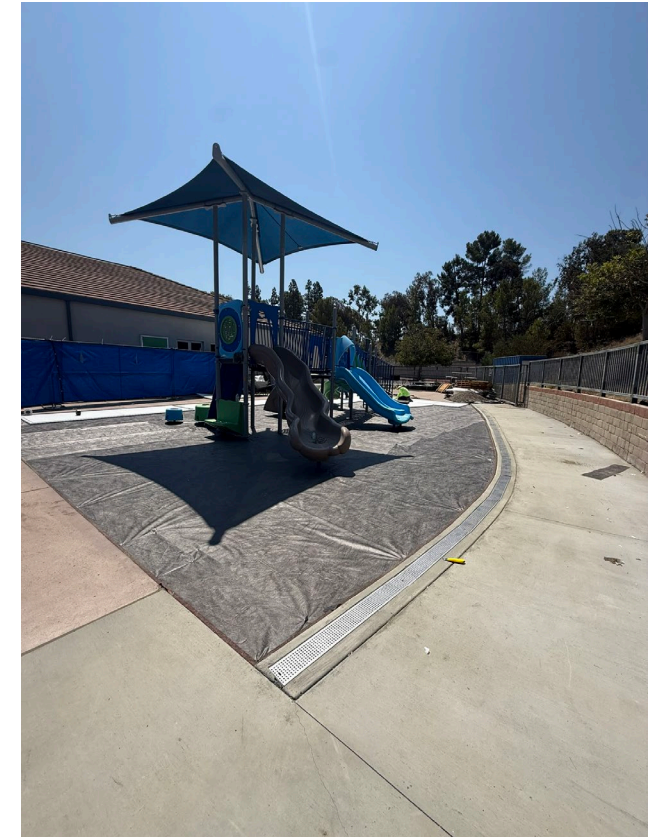
- Casa de Oro
- Sweetwater Springs

In Planning:

- Fletcher Hills
- Turf overlays
 - Avondale
 - Fletcher
 - Lemon
 - Murdock
 - Murray Manor
 - Rancho



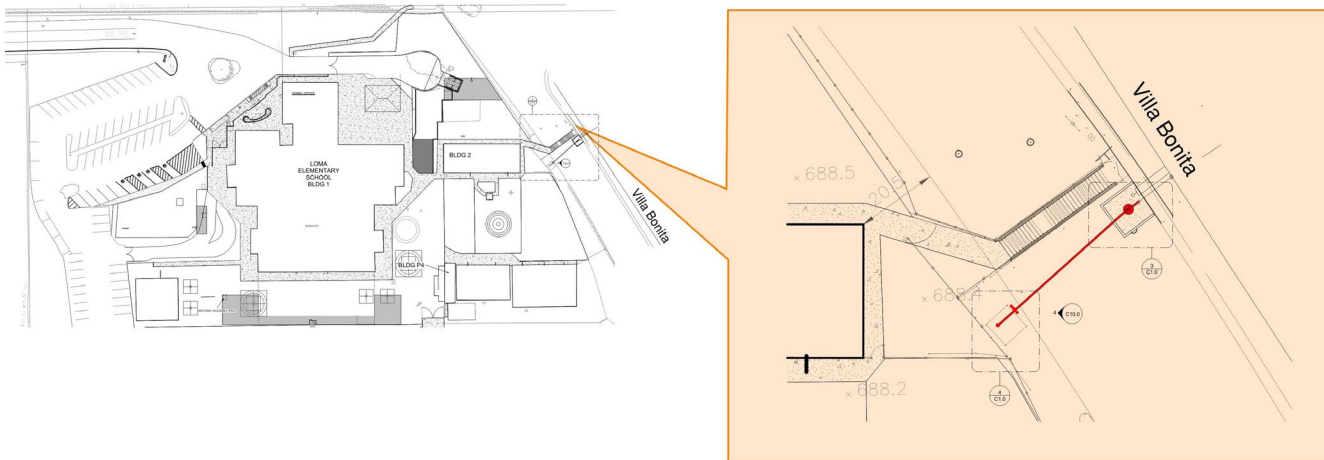
Casa de Oro



Sweetwater Springs

Loma Fire Main Backflow Preventer

New Fire Main Backflow Preventer at Point of Connection



Contractor: Blue Pacific Engineering Construction

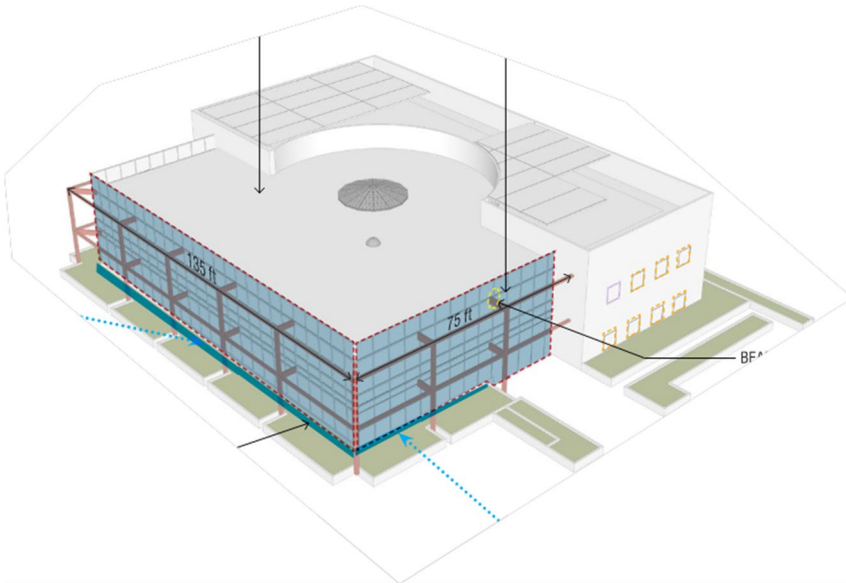
Architect: Studio WC

Start: June 2025

Estimate Completion: August 2025

Projects in Planning

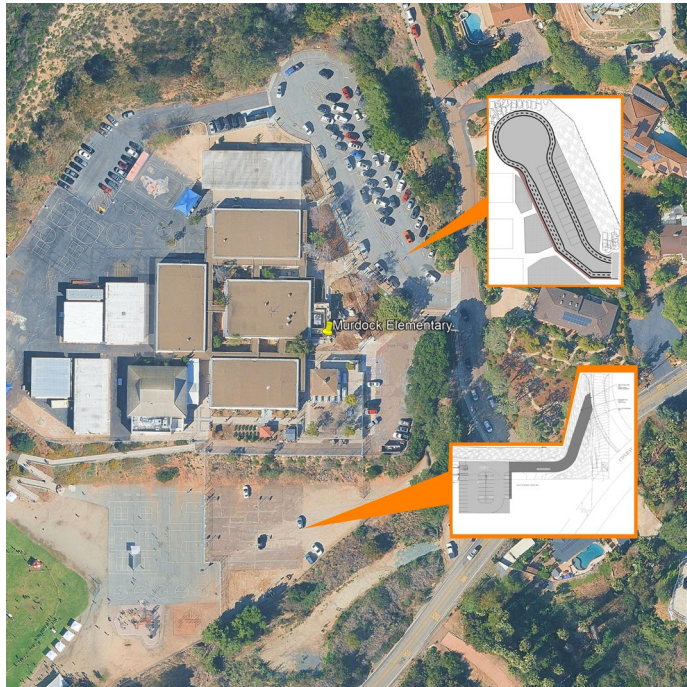
Education Center – Programming - (on hold)



District-Wide

- Room Signage (All School Sites)
- Playgrounds and Surfacing (Turf Overlay)
 - ADA and Safety
- Upgraded Irrigation Controls

Projects in Planning



Murdock Elementary School

Parking Lot Improvement Projects

- Improve pick-up and drop-off safety
- Enhance vehicle circulation
- Increase parking



Loma Elementary School

Program Revenue Summary

Fund 21 Revenue

General Obligation Bonds

August 2021	Actual	48,000,000	General Obligation Bonds, Series A
September 2023	Actual	50,000,000	General Obligation Bonds, Series B
August 2024	Actual	38,000,000	General Obligation Bonds, Series C
Total		136,000,000	<i>*Cost of Issuance is expensed in Common Costs</i>

Earned Interest

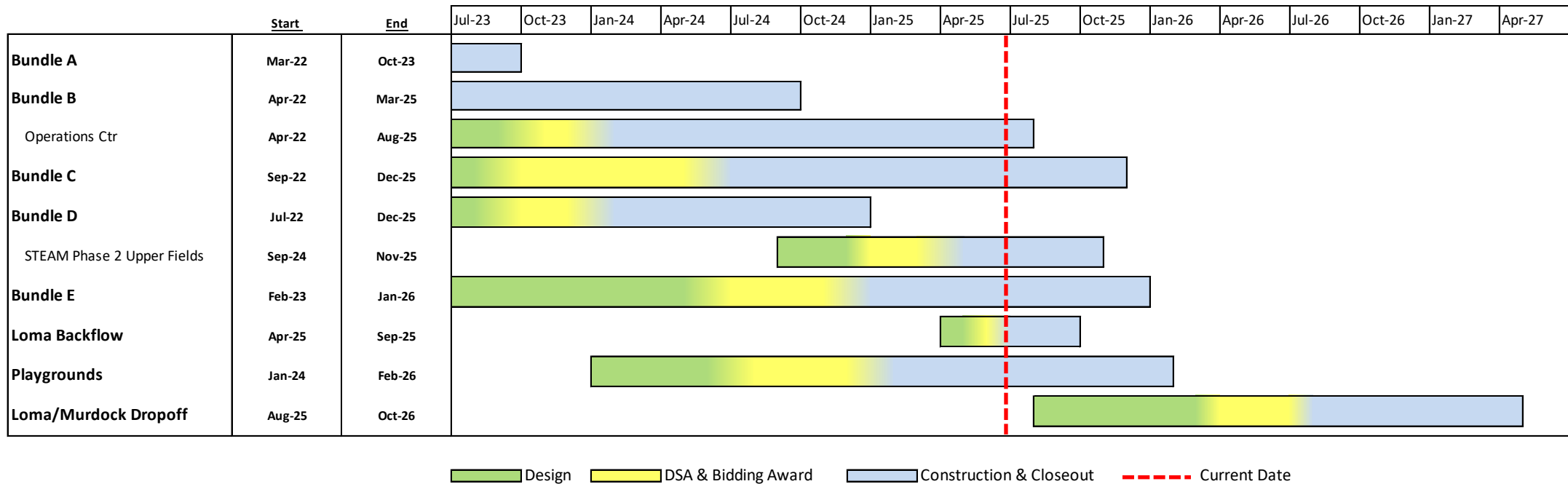
June 2022	Actual	235,372.61	FY 21/22 Earned Interest
October 2022	Actual	75,865.64	Q1 FY 22/23 Earned Interest
December 2022	Actual	59,068.40	Q1 FY 22/23 Earned Interest
February 2023	Actual	53,810.48	Q2 FY 22/23 Earned Interest
April 2022	Actual	141,251.95	Q2 FY 22/23 Earned Interest
April 2023	Actual	38,167.08	Q3 FY 22/23 Earned Interest
June 2023	Actual	210,987.68	Q3 FY 22/23 Earned Interest
June 2023	Actual	88,508.95	Q4 FY 22/23 Earned Interest
June 2023	Actual	146,003.72	Q4 FY 22/23 Earned Interest
June 2023	Actual	15,438.62	Q4 FY 22/23 Earned Interest
October 2023	Actual	33,461.56	Q1 FY 23/24 Earned Interest
December 2023	Actual	272,137.92	Q1 FY 23/24 Earned Interest
January 2024	Actual	97,618.00	Q1 FY 23/24 Earned Interest
January 2024	Actual	68,518.54	Q2 FY 23/24 Earned Interest
March 2024	Actual	406,688.35	Q2 FY 23/24 Earned Interest
April 2024	Actual	193,829.42	Q2 FY 23/24 Earned Interest
April 2024	Actual	24,692.45	Q3 FY 23/24 Earned Interest
June 2024	Actual	447,359.23	Q3 FY 23/24 Earned Interest
July 2024	Actual	163,074.83	Q3 FY 23/24 Earned Interest
July 2024	Actual	209,257.56	Q4 FY 23/24 Earned Interest
July 2024	Actual	365,557.87	Q4 FY 23/24 Earned Interest
October 2024	Actual	112,929.95	Q1 FY 24/25 Earned Interest
December 2024	Actual	382,636.81	Q1 FY 24/25 Earned Interest
January 2025	Actual	181,441.24	Q1 FY 24/25 Earned Interest
January 2025	Actual	109,345.52	Q2 FY 24/25 Earned Interest
February 2025	Actual	286,038.35	Q2 FY 24/25 Earned Interest
April 2025	Actual	232,595.78	Q2 FY 24/25 Earned Interest
April 2025	Actual	21,722.23	Q3 FY 24/25 Earned Interest
June 2025	Actual	245,148.99	Q3 FY 24/25 Earned Interest
Interest Since last adoption		245,148.99	
Total Interest To Date		4,918,529.73	
Current Revenue		140,918,529.73	



Current Program Financial Summary

Project Name	Original Budget	Current Budget	Budget Changes	Committed Costs	Expenditures	Remaining Budget	% Committed
Elementary Schools							
Avondale Site Improvements	\$2,640,853.53	\$2,168,977.60	(\$471,875.93)	\$2,137,948.34	\$2,109,790.75	\$31,029.26	98.57%
Bancroft Site Improvements	\$1,893,596.29	\$2,327,829.16	\$434,232.87	\$2,278,740.64	\$2,267,987.94	\$49,088.52	97.89%
Casa de Oro Site Improvements	\$4,121,685.39	\$3,684,236.87	(\$437,448.52)	\$3,675,187.18	\$3,643,257.18	\$9,049.69	99.75%
Fletcher Hills Elementary School	\$4,142,269.06	\$5,265,479.86	\$1,123,210.80	\$5,146,072.86	\$4,663,775.53	\$119,407.00	97.73%
Highlands Elementary Site Improvements	\$1,602,953.80	\$1,651,531.58	\$48,577.78	\$1,612,298.95	\$1,578,689.95	\$39,232.63	97.62%
Kempton Site Improvements	\$2,676,367.30	\$2,817,162.12	\$140,794.82	\$2,757,239.62	\$2,751,529.11	\$59,922.50	97.87%
La Mesa Dale Site Improvements	\$8,497,137.87	\$9,653,280.07	\$1,156,142.20	\$8,515,603.24	\$8,080,770.60	\$1,137,676.83	88.21%
La Presa Site Improvements	\$4,987,447.34	\$3,977,808.71	(\$1,009,638.63)	\$3,826,980.57	\$3,786,250.19	\$150,828.14	96.21%
Lemon Avenue Site Improvements	\$1,751,735.70	\$2,157,538.31	\$405,802.61	\$1,609,307.83	\$1,441,004.18	\$548,230.48	74.59%
Loma Elementary Site Improvements	\$782,071.17	\$1,248,484.75	\$466,413.58	\$1,234,024.24	\$1,208,219.24	\$14,460.51	98.84%
Loma Fire Main Backflow Preventor Project		\$530,701.32	\$530,701.32	\$307,628.88	\$36,941.38	\$223,072.44	57.97%
Loma Parking Lot Improvements		\$3,394,466.98	\$3,394,466.98			\$3,394,466.98	0.00%
Maryland Avenue Site Improvements	\$1,584,913.59	\$1,539,319.10	(\$45,594.49)	\$1,406,507.43	\$1,355,626.00	\$132,811.67	91.37%
Murdock Site Improvements	\$1,659,839.77	\$2,423,103.81	\$763,264.04	\$2,400,698.73	\$2,378,032.73	\$22,405.08	99.08%
Murdock Parking Lot Improvements		\$4,500,000.00	\$4,500,000.00	\$12,800.00		\$4,487,200.00	0.28%
Murray Manor Site Improvements	\$2,273,753.02	\$2,733,753.02	\$460,000.00	\$2,634,585.03	\$2,447,490.43	\$99,167.99	96.37%
Northmont Site Improvements	\$5,408,296.52	\$4,476,170.54	(\$932,125.98)	\$4,409,711.47	\$4,005,517.11	\$66,459.07	98.52%
Rancho Site Improvements	\$2,001,411.81	\$2,116,350.66	\$114,938.85	\$2,036,023.14	\$2,031,659.94	\$80,327.52	96.20%
Rolando Site Improvements	\$2,755,932.66	\$4,380,338.17	\$1,624,405.51	\$4,063,936.23	\$3,771,412.55	\$316,401.94	92.78%
Sweetwater Springs Site Improvements	\$5,629,939.77	\$2,488,261.57	(\$3,141,678.20)	\$2,447,280.31	\$2,407,615.65	\$40,981.26	98.35%
Middle Schools							
Parkway Middle School Entrance Modernizations	\$628,359.69	\$665,153.51	\$36,793.82	\$665,153.51	\$665,153.51	\$0.00	100.00%
Parkway Middle School Improvements	\$16,669,083.19	\$20,016,144.74	\$3,347,061.55	\$18,575,615.47	\$16,030,150.36	\$1,440,529.27	92.80%
La Mesa Arts Academy Entrance Modernizations	\$628,359.70	\$1,039,781.32	\$411,421.62	\$1,039,781.32	\$1,039,781.32	\$0.00	100.00%
La Mesa Arts Academy Site Improvements	\$5,568,238.99	\$3,589,258.38	(\$1,978,980.61)	\$3,196,487.72	\$2,862,184.82	\$392,770.66	89.06%
Spring Valley Academy Entrance Modernizations	\$628,359.69	\$760,549.93	\$132,190.24	\$760,549.93	\$760,549.93	\$0.00	100.00%
Spring Valley Academy Site Improvements	\$3,389,591.21	\$3,049,949.21	(\$339,642.00)	\$2,984,122.75	\$2,933,316.70	\$65,826.46	97.84%
STEAM Academy Entrance	\$628,359.69	\$1,473,233.18	\$844,873.49	\$1,473,233.18	\$1,473,233.18	\$0.00	100.00%
STEAM Academy Site Improvements	\$4,621,369.51	\$5,430,411.53	\$809,042.02	\$5,365,989.35	\$5,330,020.94	\$64,422.18	98.81%
STEAM Upper Fields		\$4,190,816.51	\$4,190,816.51	\$3,507,249.84	\$817,160.55	\$683,566.67	83.69%
Other District Sites							
STEAM Slope Stabilization	\$6,606,524.75	\$2,370,024.19	(\$4,236,500.56)	\$2,370,024.19	\$2,370,024.19	\$0.00	100.00%
Infrastructure Repairs - Districtwide	\$6,443,178.98	\$2,156,897.98	(\$4,286,281.00)	\$1,038,042.49	\$972,861.92	\$1,118,855.49	48.13%
Playground Improvements		\$6,973,731.93	\$6,973,731.93	\$4,317,408.45	\$3,572,472.48	\$2,656,323.48	61.91%
Energy Efficiency Projects - Districtwide	\$10,371,056.42	\$10,371,056.42	\$0.00	\$10,371,056.42	\$10,371,056.42	\$0.00	100.00%
Security Fencing		\$773,389.36	\$773,389.36	\$773,389.36	\$773,389.36	\$0.00	100.00%
Operations Center							
Operations Center Trailer Demolition	\$65,252.63	\$150,732.64	\$85,480.01	\$150,732.64	\$150,732.64	\$0.00	100.00%
Portable Building	\$329,545.99	\$92,655.75	(\$236,890.24)	\$92,655.75	\$92,655.75	\$0.00	100.00%
Operations Center Site Improvements	\$1,908,207.11	\$2,817,155.23	\$908,948.12	\$2,817,154.82	\$2,683,416.75	\$0.41	100.00%
Education Service Center							
Education Center Site Improvements	\$6,248,616.17	\$61,250.00	(\$6,187,366.17)	\$53,799.62	\$53,799.62	\$7,450.38	87.84%
Program Common Costs & Contingencies							
Program Administration	\$9,855,691.69	\$7,560,922.64	(\$2,294,769.05)	\$3,696,909.45	\$3,576,259.08	\$3,864,013.19	48.89%
Program Contingency	\$3,000,000.00	\$2,087,752.33	(\$912,247.67)	\$0.00	\$0.00	\$2,087,752.33	0.00%
Program Reserve	\$4,000,000.00	\$1,752,868.75	(\$2,247,131.25)	\$0.00	\$0.00	\$1,752,868.75	0.00%
Program Totals	\$136,000,000.00	\$140,918,529.73	\$4,918,529.73	\$115,761,930.95	\$106,493,789.98	\$25,156,598.78	82.15%

Schedule



Local Labor Participation (BBC)

Company	City	County	Bundle A	Bundle B & Ops Center	Bundle C	Total
Casper Company	Spring Valley	San Diego County		525,000	\$316,505	841,505
Brady Company	La Mesa	San Diego County	1,070,268	787,000	\$449,366	2,306,634
ACCO Engineered Systems	San Diego	San Diego County		1,650,000	\$1,057,700	2,707,700
Western Rim	Escondido	San Diego County	750,000	2,300,000	\$2,080,700	5,130,700
Inline Fence & Rail Company	Lakeside	San Diego County		2,150,000		2,150,000
FenceCorp	Oceanside	San Diego County		830,000	\$1,595,921	2,425,921
Pierre Landscaping	San Diego	San Diego County	255,000	390,000	\$121,370	766,370
South Bay Fence	Chula Vista	San Diego County	60,000			60,000
Kirk Paving	Lakeside	San Diego County		472,000	\$645,298	1,117,298
Ace Electric	San Diego	San Diego County		290,000	\$151,260	441,260
Precision Electric	Lakeside	San Diego County	210,000	564,000	\$1,416,000	2,190,000
Elite Earthworks	Murieta	Out of County	1,800,000			1,800,000
Marina Landscaping	San Diego	San Diego County			\$536,670	536,670

Local Labor Participation (Lusardi)

Company	City	County	Bundle D	Bundle E	STEAM UF
A Good Roofer, Inc. (Lakeside, CA)	Lakeside	San Diego		204,553	
Ace Electric, Inc. (San Diego, CA)	San Diego	San Diego	651,635	1,999,926	
Adair Striping, Inc. (Vista, CA)	Vista	San Diego		10,153	7,950
Alcorn Fence Company	San Diego	San Diego			40,020
Brady West, Inc. (So CA & Central CA)	La Mesa	San Diego	105,500	975,787	
Brian Cox Mechanical, Inc. BCM (So Cal (no LA))	Poway	San Diego	2,417,016	637,927	
Buxcon Sheetmetal, Inc. (So Cal)	Santee	San Diego		160,200	
Cement Cutting, Inc. (SD, Riverside & Imperial Counties)	San Diego	San Diego	703,428	1,151,683	149,937
Centex Glazing, Inc. (La Mesa, CA)	La Mesa	San Diego		307,241	
Complete Playground Maintenance	Vista	San Diego		15,768	258,429
Comprehensive Glass Works (Santee, CA)	Santee	San Diego		15,768	
Construction Cleaning Services, Inc. (Bonita, CA)	Bonita	San Diego		33,077	10,929
Control Air Enterprises, LLC	San Marcos	San Diego			18,517
D and D Concrete Construction, Inc. (Poway, CA)	Poway	San Diego		1,367,762	
Demcon Concrete Contractors, Inc. (Poway, CA)	Poway	San Diego		281,949	
DFS Flooring LP	San Diego	San Diego			60,970
FenceCorp, Inc. (So Cal)	Oceanside	San Diego		1,141,778	
Heartland Acoustics and Interiors of California, Inc. (Carlsbad, CA)	Lakeside	San Diego		19,080	
His Construction Company	Carlsbad	San Diego		19,080	91,413
HSCC, Inc.	Lakeside	San Diego	1,711,564		262,178
Johnston Tractor, Inc. (SD County)	Alpine	San Diego	431,840	482,989	495,562
Kier & Wright Civil Engineers & Surveyors, Inc. (NorCal, SoCal)	Livermore	Alameda		55,911	
Kyne Construction, Inc. (El Cajon, CA)	El Cajon	San Diego		1,697,017	
MC Painting aka MC Contracting (Oceanside, CA)	Oceanside	San Diego	158,765	253,762	

Local Labor Participation (Lusardi)

Company	City	County	Bundle D	Bundle E	STEAM UF
Neal Electric Corp	Carlsbad	San Diego			59,500
New Dimension Masonry, Inc. (SD, OC, Rlv., San Bern, Vent., Imp Counties)	San Diego	San Diego	159,244	60,405	
Nicholas De Graaf dba Pacific Flagpole Service (San Diego, CA)	San Diego	San Diego	61,995	33,055	
OFS Flooring, LP (So Cal)	San Diego	San Diego		185,946	
Pacific Coast Cleaning, Inc. (So Cal)	El Cajon	San Diego		8,051	
PAL General Engineering, Inc.	Carlsbad	San Diego		581,557	154,196
Park West Rescom (So Cal)	Rancho Santa Margarita	Orange		581,557	
Pierre Landscape	Irwindale	Los Angeles	717,608		
Premier Sign Service, Inc. (Riverside, CA)	Riverside	Riverside	318,040	148,870	
RAP Engineering, Inc. (San Diego ONLY)	San Marcos	San Diego	195,548	386,464	
Robertson Industries, Inc.	Tempe	Maricopa, AZ	195,548		64,714
Rocky Coast Builders, Inc. (Escondido, CA)	Escondido	San Diego		600,995	
Sherwood Mechanical, Inc. (So Cal)	San Diego	San Diego		402,396	77,128
Southwest Construction Services, Inc. (Lakeside, CA)	Lakeside	San Diego		24,988	15,208
Spooners Woodworks, Inc. (So Cal)	Poway	San Diego		81,625	9,950
Standford Sign & Awning, Inc.	Chula Vista	San Diego			5,414
Strelc Plumbing Inc. DBA Advance Plumbing Company	El Cajon	San Diego	521,240		
Sylvester Roofing Company, Inc.	Escondido	San Diego	17,000		
Systems Waterproofing, Inc. (So Cal)	Orange	Orange		51,499	
Team West Contracting Corporation	Corona	Riverside	2,018,975		
Trinity Grading	Temecula	Riverside			226,323
Vorwaller & Brooks Inc. (Poway)	Poway	San Diego		167,490	23,700
West Coast Iron, Inc. WCI (Spring Valley, CA)	Spring Valley	San Diego	445,744	472,968	13,848
Western Sign & Awning (San Marcos, CA)	San Marcos	San Diego	83,910	76,569	
XYZ Consulting, Inc. (So Cal)	San Diego	San Diego	121,500	56,173	24,000

Questions?

Thank you for your time
and attention.

