

Maryland Avenue Elementary - 5400 Maryland Ave, La Mesa, CA 91942, Spring Valley, CA 91977



FIELD SURVEY DATE:
July 21, 2025

FIELD SURVEY ATTENDEES:
Miguel Gonzalez — NV5
Mario Lopez — LMSV
Lee Cirket — LMSV
Jason Junker — LMSV

NOTES:
1. One existing BFP.

2. The whole campus water system is cross connected.

LEGEND

POTABLE LINE	(Existing)
IRRIGATION LINE	(Existing)
IRRIGATED BY POTABLE	(Existing)
IRRIGATED BY IRRIGATION	(Existing)
POTABLE BACKFLOW	(Existing)
IRRIGATION BACKFLOW	(Existing)
IRRIGATION BOX	(Existing)
CAMPUS BOUNDARY	(Existing)

New Back Flow, cage and concrete pad location ■

N.I.C - Not In Contract

(10) New back flow, cages and concrete pad locations. Back flows must be certified after installation

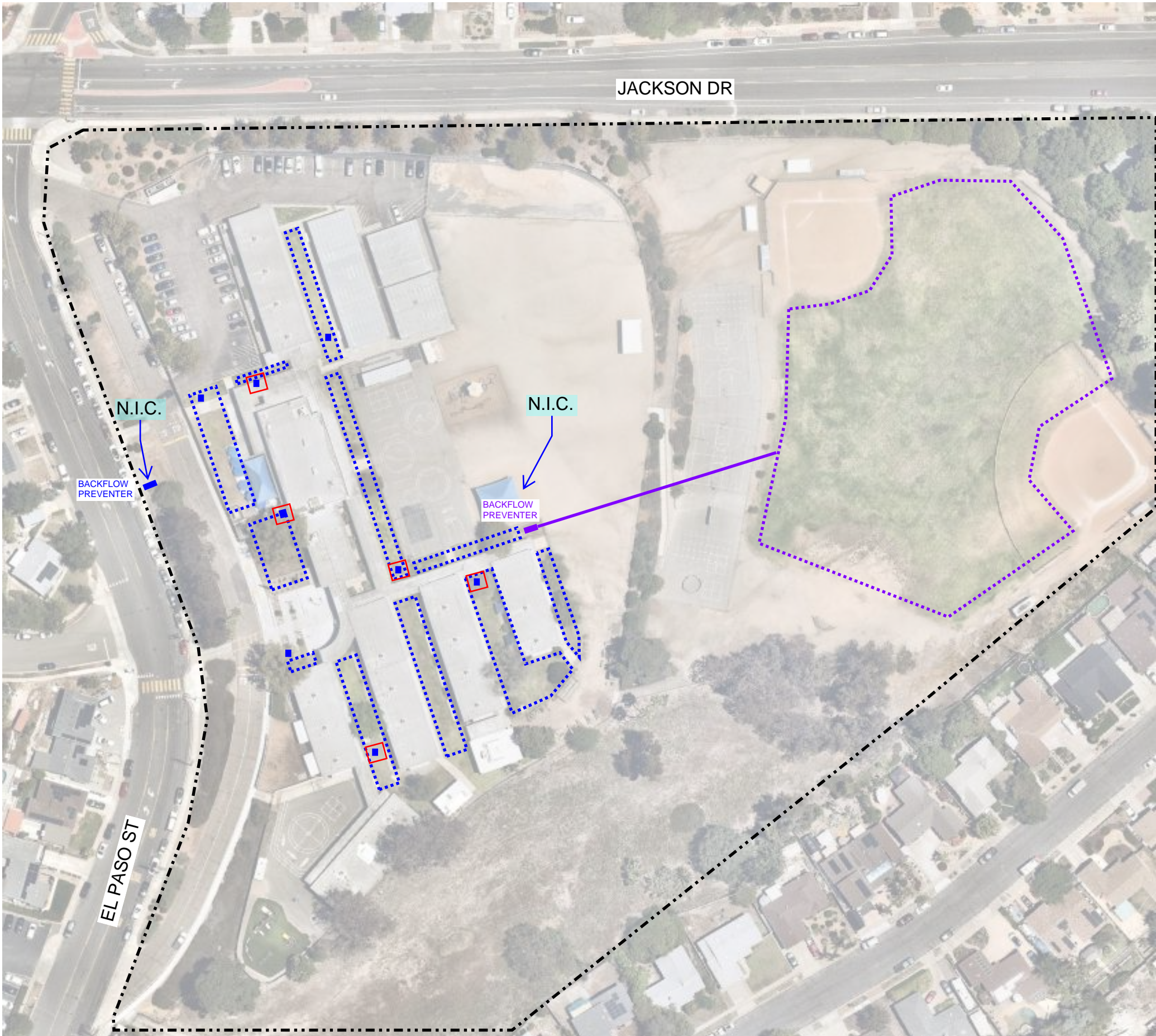


DATE: 08/01/2025



NOTE: WATER AND IRRIGATION LINES ARE SHOWN SCHEMATICALLY ONLY. NV5 DOES NOT GUARANTEE THE LOCATIONS SHOWN.

Murray Manor Elementary School - 8305 El Paso St, La Mesa, CA 91942, Spring Valley, CA 91977



FIELD SURVEY DATE:
July 21, 2025

FIELD SURVEY ATTENDEES:
Miguel Gonzalez — NV5
Mario Lopez — LMSV
Lee Cirket — LMSV
Jason Junker — LMSV

NOTES:
1. One existing potable BFP and one existing irrigation BFP.

2. The whole campus water system is cross connected.

LEGEND

POTABLE LINE	(Existing)
IRRIGATION LINE	(Existing)
IRRIGATED BY POTABLE	(Existing)
IRRIGATED BY IRRIGATION	(Existing)
POTABLE BACKFLOW	(Existing)
IRRIGATION BACKFLOW	(Existing)
IRRIGATION BOX	(Existing)
CAMPUS BOUNDARY	(Existing)

Back Flow, cage and concrete pad Location

N.I.C - Not In Contract

(5) New back flow, cages and concrete pad locations. Back flows must be certified after installation

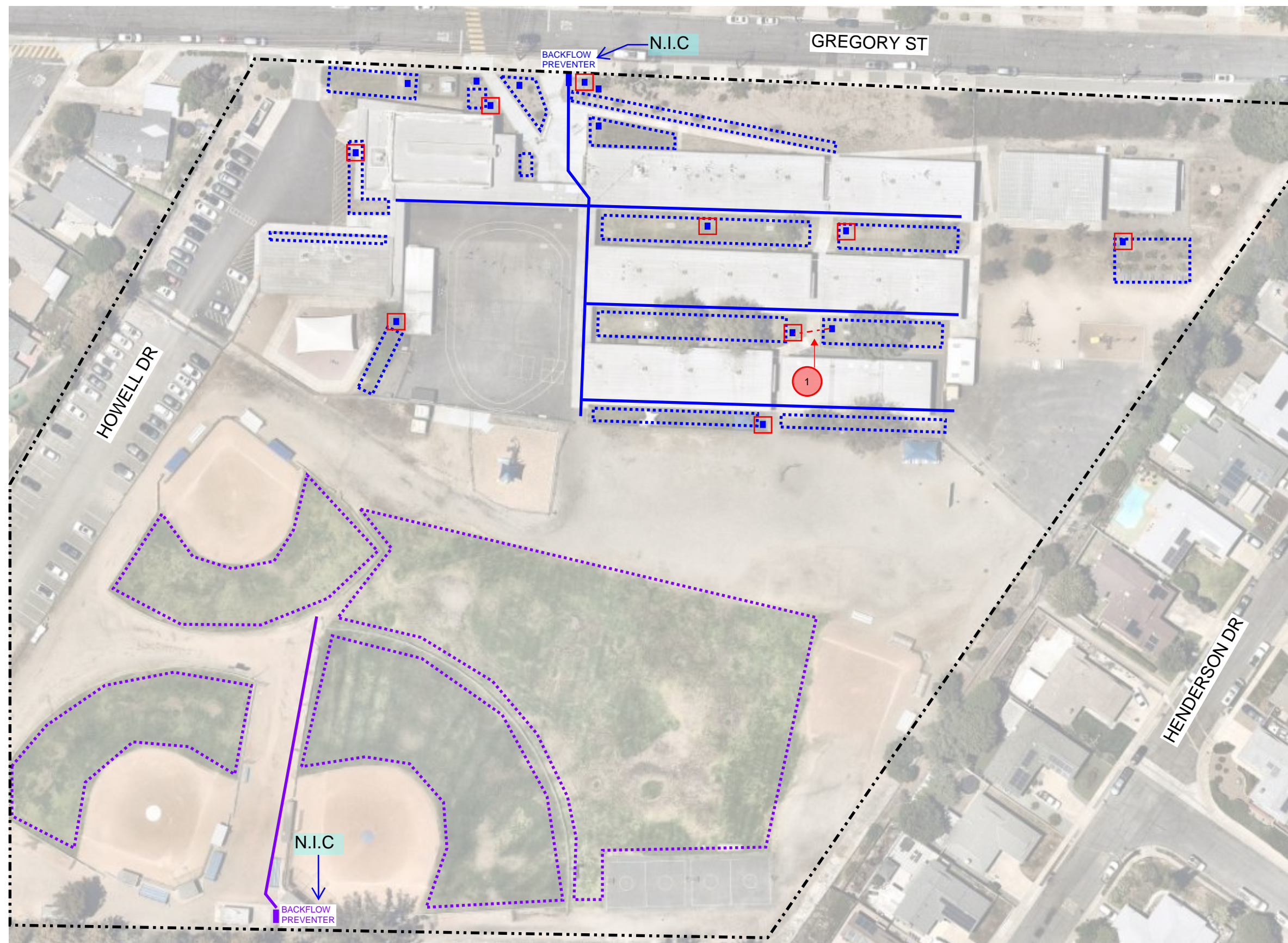


DATE: 08/01/2025



NOTE: WATER AND IRRIGATION LINES ARE SHOWN SCHEMATICALLY ONLY. NV5 DOES NOT GUARANTEE THE LOCATIONS SHOWN.

Northmont Elementary School - 9405 Gregory St, La Mesa, CA 91942, Spring Valley, CA 91977



FIELD SURVEY DATE:
July 21, 2025

FIELD SURVEY ATTENDEES:
Miguel Gonzalez — NV5
Mario Lopez — LMSV
Lee Cirket — LMSV
Jason Junker — LMSV

NOTES:
1. One existing potable BFP and one existing irrigation BFP.

2. The whole campus water system is cross connected.

LEGEND

POTABLE LINE	(Existing)
IRRIGATION LINE	(Existing)
IRRIGATED BY POTABLE	(Existing)
IRRIGATED BY IRRIGATION	(Existing)
POTABLE BACKFLOW	(Existing)
IRRIGATION BACKFLOW	(Existing)
IRRIGATION BOX	(Existing)
CAMPUS BOUNDARY	(Existing)

New Back Flow, cage and concrete pad Location [Red Square]

N.I.C - Not In Contract

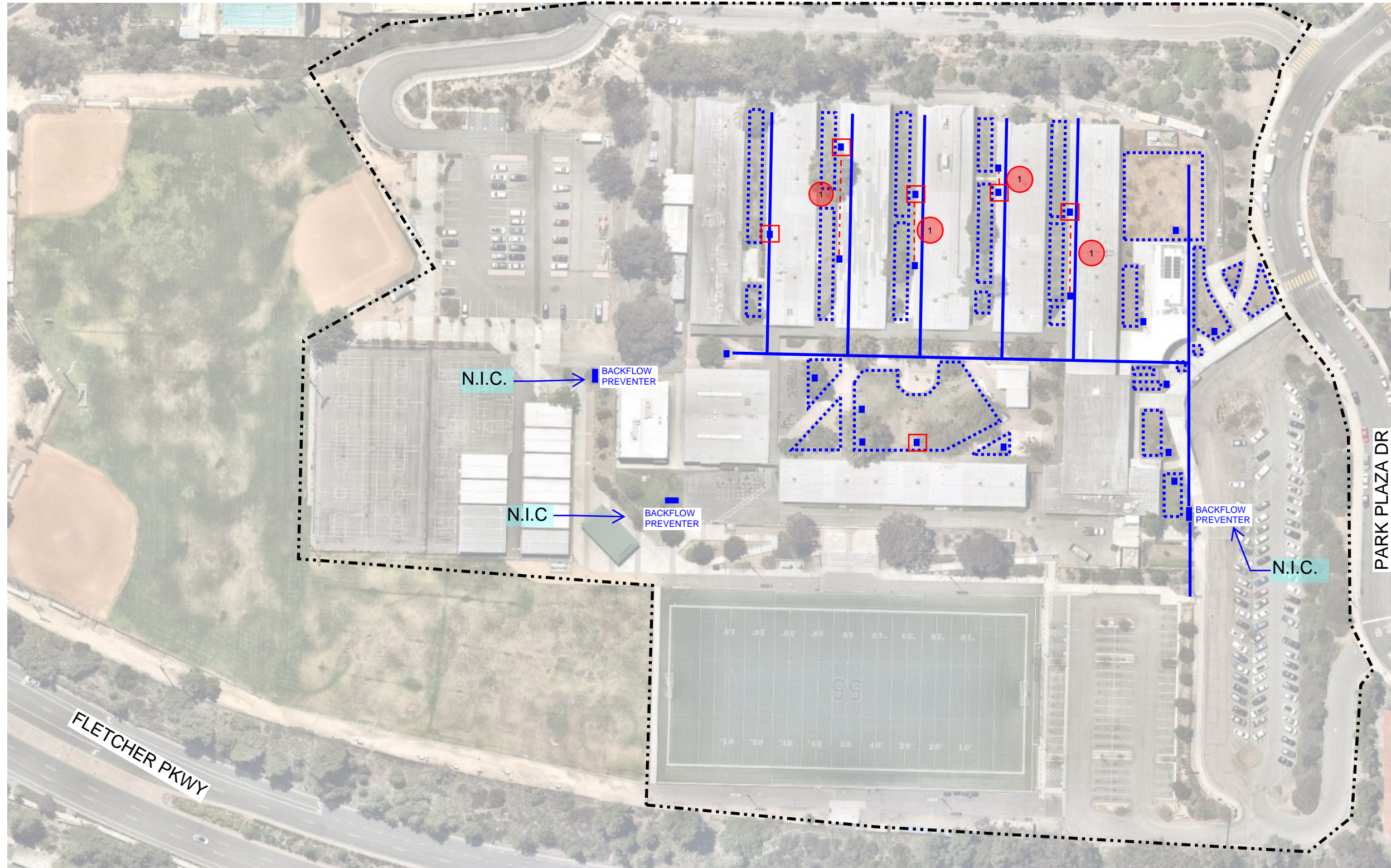
Saw cut concrete to tie the irrigation valves together to be fed from (1) back flow device. Saw cut is to be concrete panel to concrete panel. Replace full panel of concrete. [Red Circle 1]

DATE: 08/01/2025

(9) New back flow, cages and concrete pad locations. Back flows must be certified after installation

NOTE: WATER AND IRRIGATION LINES ARE SHOWN SCHEMATICALLY ONLY. NV5 DOES NOT GUARANTEE THE LOCATIONS SHOWN.

Parkway Sports & Health Science Academy - 9009 Park Plaza Dr, La Mesa, CA 91942, Spring Valley, CA 91977



FIELD SURVEY DATE:
July 21, 2025

FIELD SURVEY ATTENDEES:
Miguel Gonzalez — NV5
Mario Lopez — LMSV
Lee Cirket — LMSV
Jason Junker — LMSV

NOTES:
1. Three existing BFPs.
2. The whole campus water system is cross connected and is likely looped.

LEGEND

POTABLE LINE	(Existing)
IRRIGATION LINE	(Existing)
IRRIGATED BY POTABLE	(Existing)
IRRIGATED BY IRRIGATION	(Existing)
POTABLE BACKFLOW	(Existing)
IRRIGATION BACKFLOW	(Existing)
IRRIGATION BOX	(Existing)
CAMPUS BOUNDARY	(Existing)

- New irrigation line -----
- Back Flow, cage and concrete pad Location ■
- N.I.C - Not In Contract
- Intercept existing irrigation line from existing valve box and route through new back flow location to add back flow protection to both valves ①

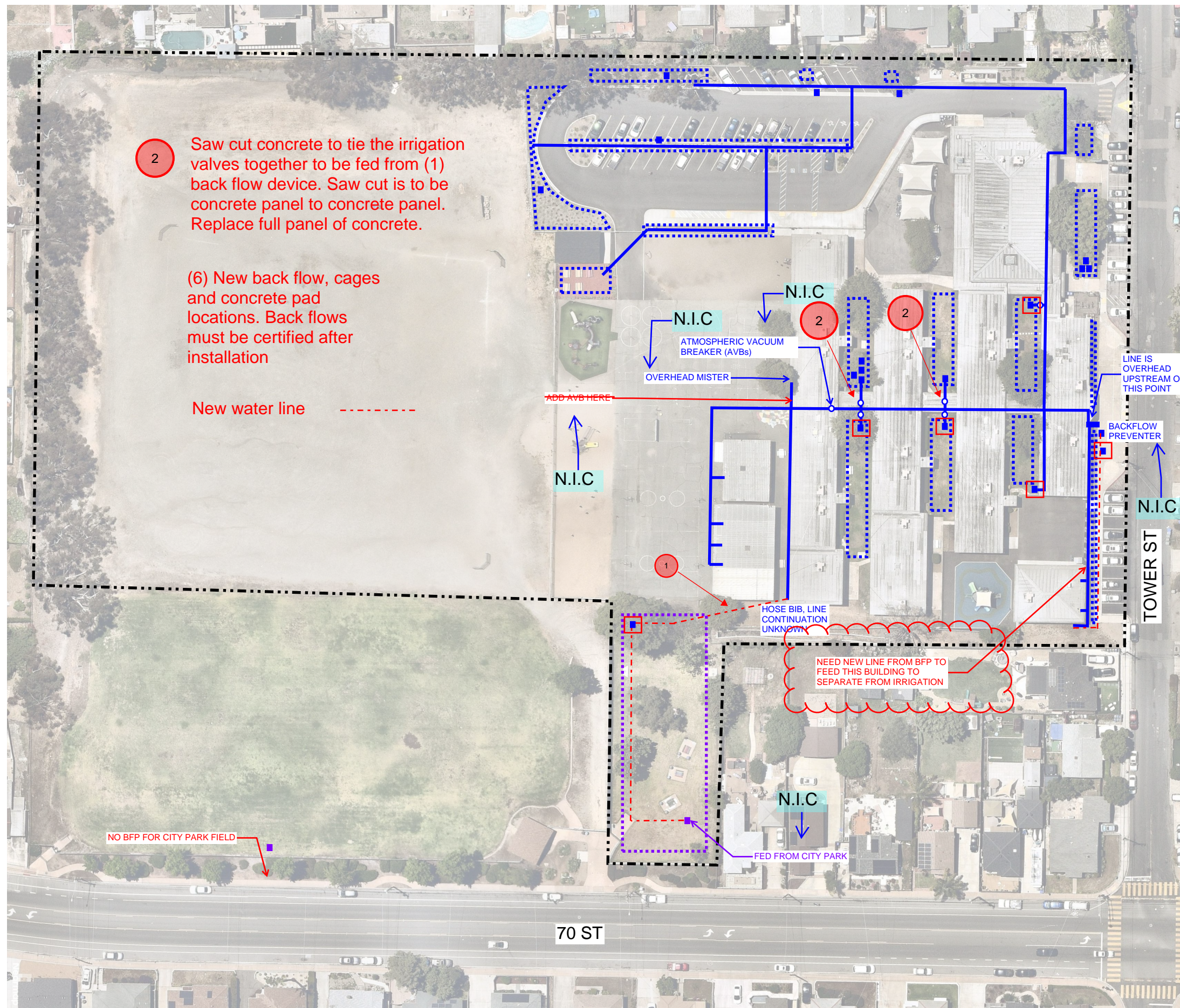
(6) New back flow, cages and concrete pad locations. Back flows must be certified after installation



DATE: 08/01/2025



Rolando Elementary School- 6925 Tower St, La Mesa, CA 91942, Spring Valley, CA 91977



FIELD SURVEY DATE:

July 21, 2025

FIELD SURVEY ATTENDEES:

Miguel Gonzalez — NV5

Mario Lopez — LMSV

Lee Cirket — LMSV

Jason Junker — LMSV

NOTES:

1. One existing BFP.

2. The whole campus water system is cross connected.

LEGEND

POTABLE LINE	(Existing)
IRRIGATION LINE	(Existing)
IRRIGATED BY POTABLE	(Existing)
IRRIGATED BY IRRIGATION	(Existing)
POTABLE BACKFLOW	(Existing)
IRRIGATION BACKFLOW	(Existing)
IRRIGATION BOX	(Existing)
CAMPUS BOUNDARY	(Existing)

New Back Flow, cage and concrete pad Location

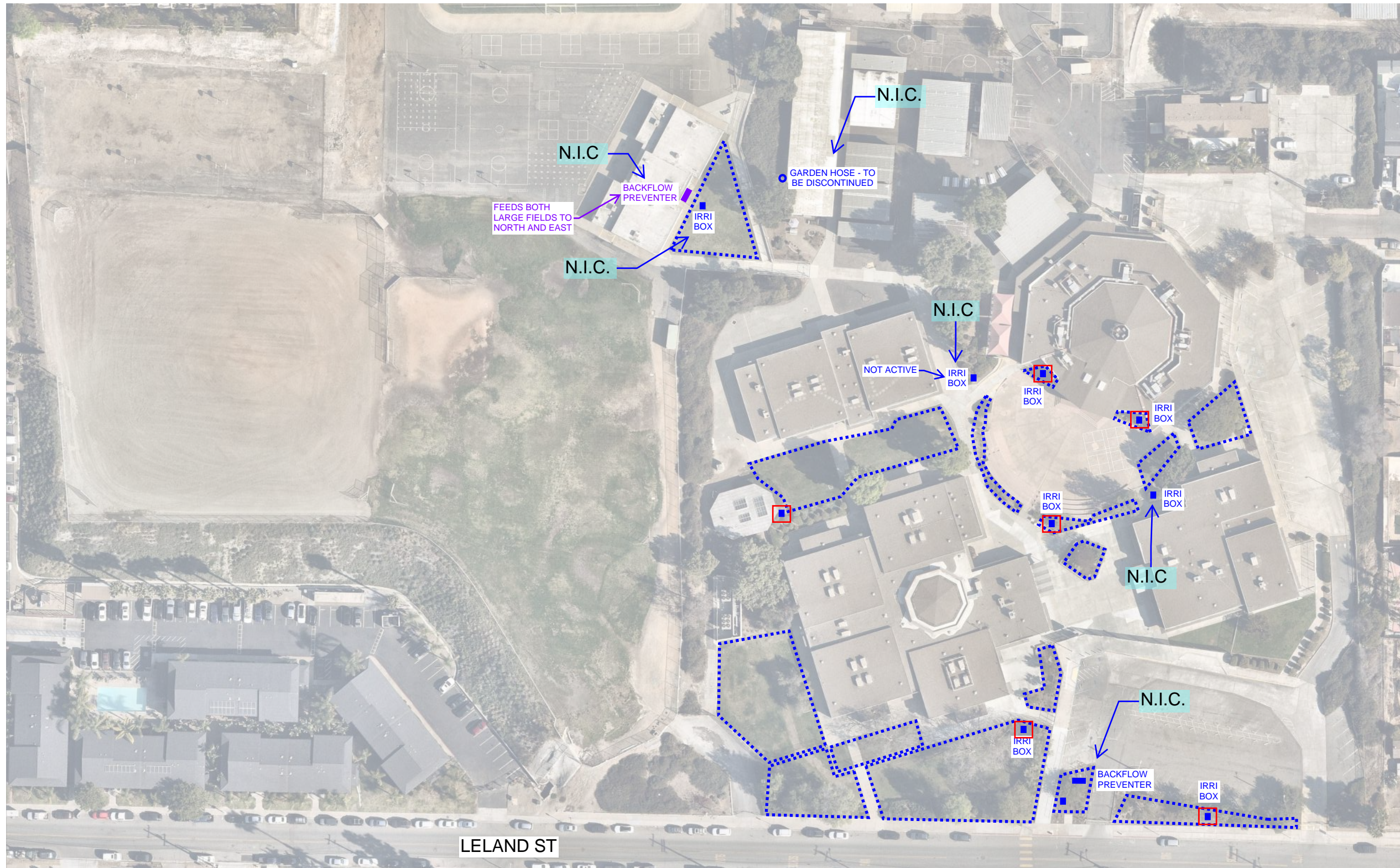
N.I.C - Not In Contract

Connect to existing water surface mounted water line in corridor and route line to existing valves in grass area. Provide new back flow device, cage and concrete pad.

DATE: 08/01/2025



STEAM Academy - 101 Leland St. Spring Valley, CA 91977



FIELD SURVEY DATE:

November 25, 2025

FIELD SURVEY ATTENDEES:

Miguel Gonzalez — NV5

Mario Lopez — LMSV

Lee Cirket — LMSV

Jason Junker — LMSV

NOTES:

1. Vegetated areas shown in purple dashed line are supplied by irrigation system. All other vegetated areas are supplied by potable system.

2. All buildings are confirmed to be fed by portable system.

3. Total number of irrigation boxes needing backflow = 10

LEGEND

POTABLE LINE	(Existing)
IRRIGATION LINE	(Existing)
IRRIGATED BY POTABLE	(Existing)
IRRIGATED BY IRRIGATION	(Existing)
POTABLE BACKFLOW	(Existing)
IRRIGATION BACKFLOW	(Existing)
IRRIGATION BOX	(Existing)
APPROX. PROPERTY LINE	(Existing)

New Back Flow, cage and concrete pad Location

N.I.C. - Not In Contract



DATE: 12/16/2025

NV5

(6) New back flow, cages and concrete pad locations. Back flows must be certified after installation