



# **Community Schools Implementation & Sustainability Plans**

La Mesa-Spring Valley School District

**2026/2027**

## Table of Contents

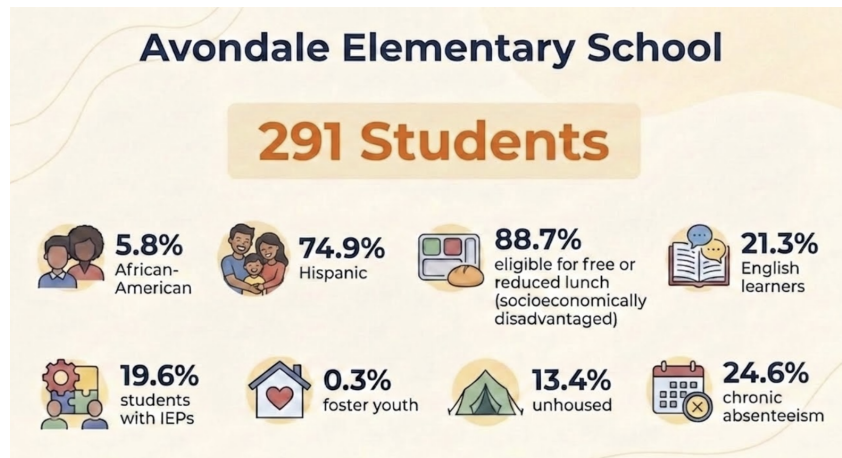
Avondale Elementary  
Bancroft Elementary  
Casa de Oro Elementary  
Highlands Elementary  
Kempton Elementary  
La Mesa Dale Elementary  
La Presa Elementary  
Loma Elementary  
Rancho Elementary  
Rolando Elementary  
Sweetwater Springs Elementary  
Spring Valley Academy  
STEAM Academy

## Avondale Elementary School - Principal: Marisa Chaniot

### Goals and Priorities (2026–27)

**Avondale Elementary School** is entering year three of Community Schools implementation. Our focus is to continue building a whole-child community school model grounded in the four pillars: integrated student supports, family and community engagement, collaborative leadership, and expanded learning opportunities. This work will continue to grow and strengthen over the remaining years of the 5-year grant.

### School Overview



### Identified Needs

Families and students at **Avondale Elementary School** need increased support in the following areas:

- Social-emotional learning and student connectedness
- Access to health services (mental health, medical, dental, vision)
- School facilities and outdoor learning spaces
- Expanded after-school enrichment (arts, music, robotics, tutoring)
- Family support services (basic needs, ESL classes, and access to resources)

**Avondale Elementary Community School Implementation & Sustainability Plan**

Community Schools Pillar	Current Activities (2025–26)	Proposed Activities (2026–27)	Sustainability Plan for Each Item
<p><b>Integrated Student Supports</b></p>	<p><b>Garden Club:</b> 30 students participating; funded by Sprouts grant</p> <p><b>Run 4 Fun:</b> 50% of students participating daily</p> <p><b>Lego &amp; Comic Clubs:</b> Led by Principal and CSF; ~30 students attending weekly</p>	<p><b>Garden Club:</b> Maintain 30 students; expand partnerships and increase family involvement</p> <p><b>Run 4 Fun:</b> Increase to 70% student participation; add 10% staff participation</p> <p><b>Clubs:</b> Build CSF capacity to lead; expand to once per trimester; explore lunch/recess clubs</p>	<p>Develop additional community partnerships Incorporate parents as partners</p> <p>Build staff capacity to sustain programs</p> <p>Develop partnership with Run 4 Fun / Girls on the Run</p>

<p><b>Family &amp; Community Engagement</b></p>	<p><b>SDSU Partnership:</b> Reading nights with student-athletes</p> <p><b>Community Engagement:</b> Tigers attend SDSU games, library, and community events</p> <p><b>Dinner with the Principal:</b> 4 sessions with 100+ families</p> <p><b>Reading Events:</b> Multiple events with community partners</p>	<p>Continue SDSU reading nights; add at least one additional athlete-supported event</p> <p>Maintain participation in community events</p> <p>Continue at least 4 Dinner with the Principal events</p> <p>Launch Family Lego Event with literacy focus (goal: 50 families), then increase to 70 families; Continue reading events with expanded community partner involvement</p>	<p>Continue partnerships with SDSU and community organizations</p> <p>Increase use of community business donations</p> <p>Transition to fully community-funded events where possible</p> <p>Encourage family and community-led facilitation of events</p>
<p><b>Collaborative Leadership</b></p>	<p><b>Principal–CSF Meetings:</b> Monthly</p> <p><b>Community Partnerships:</b> 3 established partnerships</p>	<p>Establish site advisory teams (include teacher leads)</p> <p>Increase CSF involvement in PTA, SSC, ELAC, and site leadership groups; Develop at least 3 additional partnerships with local businesses and community groups</p>	<p>Embed CSF role in leadership structures (ILT, PTA, SSC, ELAC)</p> <p>Maintain and strengthen partnerships with businesses and community; Support partnerships through ongoing staff engagement and outreach</p>

<b>Expanded &amp; Enriched Learning Opportunities</b>	<b>Playworks &amp; After-School Programs:</b> Served 291 TK–5 students  <b>Campus Attendants:</b> Support Playworks with minimal oversight  <b>Tutoring:</b> Supported 50+ students	Maintain Playworks implementation with increased staff ownership and fidelity  Continue after-school enrichment opportunities  Maintain tutoring support for at least 50 students through staff and external providers	Build staff capacity to independently implement Playworks  Ensure campus attendants use Playworks with fidelity  Transition tutoring to primarily staff-led model while maintaining partnerships as needed
---	---	--	--

**LCAP Alignment**

This work aligns with **LCAP Goal 2: Engage**, focusing on student well-being, attendance, family engagement, and equitable access to support.

**Strategic Community Partnerships**

We partner with organizations to provide:

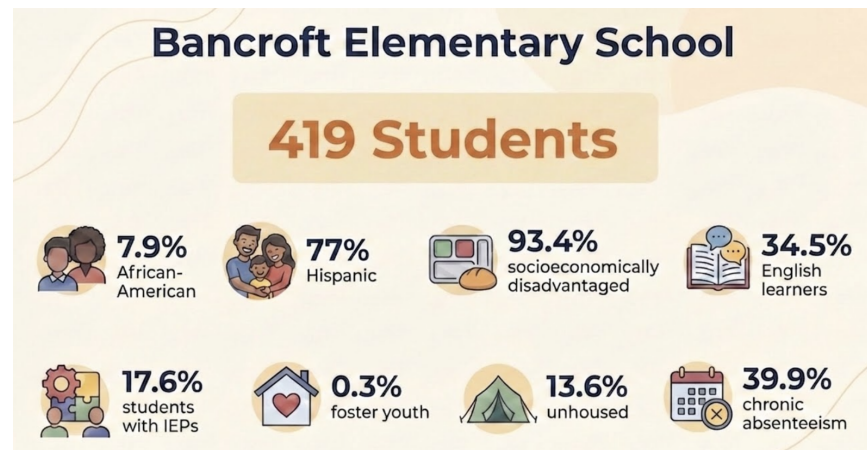
- Health and mental health services
- Educational and workforce opportunities
- Family and community engagement supports
- Food and basic needs resources
- School climate and enrichment programs

**Bancroft Elementary School - Principal: Nathan Saucedo**

**Goals and Priorities (2026–27)**

**Bancroft Elementary School** is entering year three of Community Schools implementation. Our focus is to continue building a whole-child community school model grounded in the four pillars: integrated student supports, family and community engagement, collaborative leadership, and expanded learning opportunities. This work will continue to grow and strengthen over the remaining years of the 5-year grant.

**School Overview**



**Identified Needs**

Families and students at **Bancroft Elementary School** need increased support in the following areas:

- Social-emotional learning and student connectedness
- Access to health services (mental health, medical, dental, vision)
- School facilities and outdoor learning spaces
- Expanded after-school enrichment (arts, music, robotics, tutoring)
- Family support services (basic needs, ESL classes, and access to resources)

**Bancroft Elementary Community School Implementation & Sustainability Plan**

Community Schools Pillar	Current Activities (2025–26)	Proposed Activities (2026–27)	Sustainability Plan for Each Item
<p><b>Integrated Student Supports</b></p>	<p><b>Tutoring (K12 Program):</b> 28 students supported during and after school; CS funds used to pay teachers for after-school tutoring.</p> <p><b>SDYS Dino School Partnership:</b> 50 students referred; SDYS supports school and parent events.</p> <p><b>Playworks:</b> Supported by 5 campus attendants and CSF.</p>	<p><b>Tutoring:</b> Increase to 30 students; continue funding teachers for after-school tutoring.</p> <p><b>Dino School:</b> Continue partnership with SDYS for referrals and support at school and family events.</p> <p><b>Playworks:</b> Campus attendants lead with limited support (5 staff + CSF).</p>	<p><b>Tutoring:</b> Expand partnerships with local high schools; continue funding to increase to 33 students served.</p> <p><b>Dino School:</b> Maintain SDYS partnership for ongoing referrals and event support.</p> <p><b>Playworks:</b> Campus attendants independently lead program and incorporate 8 junior leaders.</p>

<p><b>Family &amp; Community Engagement</b></p>	<p><b>Coffee with the Principal:</b> 20 parents attending.</p> <p><b>ELAC Meetings:</b> 10–15 parents attending.</p> <p><b>Science Night (Fleet Science Center):</b> 100 families attending.</p> <p><b>Mexican Heritage Night:</b> 200+ families attending.</p>	<p><b>Coffee with the Principal:</b> Increase to 25 parents.</p> <p><b>ELAC Meetings:</b> Increase to 18 parents.</p> <p><b>Science Night:</b> Increase to 110 families; include 5 staff volunteers and expand activities across campus.</p> <p><b>Multicultural Night:</b> Expand to represent additional cultures (5–6 more); increase to 210 families.</p>	<p><b>Coffee with the Principal:</b> Increase to 28 parents through ongoing community partnerships.</p> <p><b>ELAC Meetings:</b> Increase to 20 parents.</p> <p><b>Science Night:</b> Sustain through teacher and community partnerships; increase to 120 families and 8 staff volunteers.</p> <p><b>Multicultural Night:</b> Partner with PTA and local organizations; increase to 215 families and add 2–3 new partners.</p>
<p><b>Collaborative Leadership</b></p>	<p><b>Principal–CSF Meetings:</b> Ongoing collaboration (2 staff).</p> <p><b>Playworks Leadership:</b> 5 campus attendants supporting implementation.</p> <p><b>Attendance Team:</b> 7 staff members meeting twice per month.</p>	<p><b>Community Support Team:</b> Establish team including 2 teachers, 2 parents, and 1 CSF.</p> <p><b>Playworks:</b> Campus attendants lead with limited support (5 staff).</p> <p><b>Attendance Team:</b> Continue bi-monthly meetings with fidelity.</p>	<p><b>Community Support Team:</b> Expand participation by adding 1 teacher, 2 parents, and principal leadership.</p> <p><b>Playworks:</b> Campus attendants independently lead and support the junior leader program (5 staff + 8 student leaders).</p> <p><b>Attendance Team:</b> Maintain consistent structure and participation.</p>

<b>Expanded &amp; Enriched Learning Opportunities</b>	<b>i9 Soccer (Afterschool):</b> 50 students served.	<b>i9 Soccer:</b> Increase to 55 students; partner with i9 and community organizations to provide scholarships.	<b>i9 Soccer:</b> Continue program with scholarships from community partners or Title I funds; increase to 60 students.
	<b>Heartlight Dance Program:</b> 30+ students per session.	<b>Heartlight Dance:</b> Increase to 35 students; secure 8 scholarships.	<b>Heartlight Dance:</b> Increase to 38 students; secure 10 scholarships.
	<b>K16 Tutoring (Reading):</b> 20 students supported after school.	<b>K16 Tutoring:</b> Expand to 30 students; provide funding for teachers to support tutoring.	<b>Tutoring:</b> Expand partnerships with local high schools and teachers to support 30+ students.

**LCAP Alignment**

This work aligns with **LCAP Goal 2: Engage**, focusing on student well-being, attendance, family engagement, and equitable access to support.

**Strategic Community Partnerships**

We partner with organizations to provide:

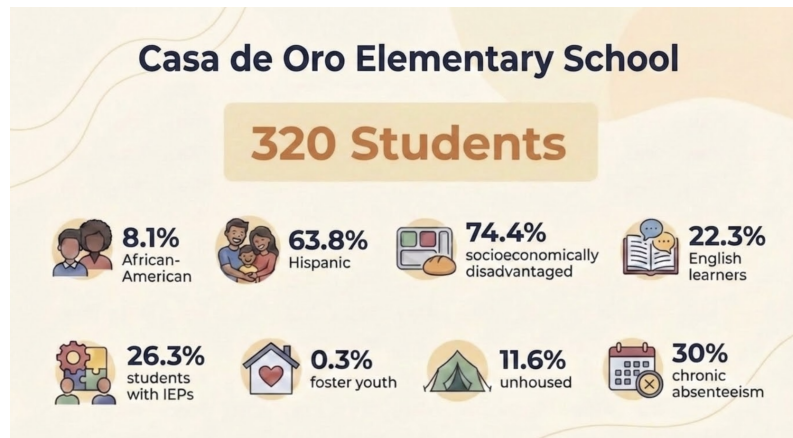
- Health and mental health services
- Educational and workforce opportunities
- Family and community engagement supports
- Food and basic needs resources
- School climate and enrichment programs

## Casa de Oro Elementary School - Principal: Carrie Faulk

### Goals and Priorities (2026–27)

**Casa de Oro Elementary School** is entering year three of Community Schools implementation. Our focus is to continue building a whole-child community school model grounded in the four pillars: integrated student supports, family and community engagement, collaborative leadership, and expanded learning opportunities. This work will continue to grow and strengthen over the remaining years of the 5-year grant.

### School Overview



### Identified Needs

Families and students at **Casa de Oro Elementary School** need increased support in the following areas:

- Social-emotional learning and student connectedness
- Access to health services (mental health, medical, dental, vision)
- School facilities and outdoor learning spaces
- Expanded after-school enrichment (arts, music, robotics, tutoring)
- Family support services (basic needs, ESL classes, and access to resources)

**Casa de Oro Elementary Community School Implementation & Sustainability Plan**

Community Schools Pillar	Current Activities (2025–26)	Proposed Activities (2026–27)	Sustainability Plan for Each Item
<p><b>Integrated Student Supports</b></p>	<p><b>Tutoring:</b> Partnership supported 50 students (Grades 3–5) in Math/ELA; 15% benchmark growth.</p> <p><b>Home Visits:</b> CSF and School Social Worker conduct visits for high-need families.</p> <p><b>Campus Attendant Check-ins:</b> Wellness monitoring during recess/passing time (biweekly).</p> <p><b>Lunch Bunch:</b> Attendance incentive improved attendance by 5%.</p> <p><b>Food for Kids Backpack Program:</b> 27 weekly meal kits provided.</p>	<p><b>Tutoring:</b> Expand to K–2; serve 60+ students.</p> <p><b>Home Visits:</b> Formalize schedule and referral process to reach 100% of Tier 3 chronically absent students.</p> <p><b>Positive Play Initiative:</b> Structured SEL games to reduce playground referrals by 20%.</p> <p><b>Lunch Clubs:</b> Expand to enrichment clubs (Chess, Art, Coding).</p> <p><b>Food Access:</b> Increase to 35 families; add Community Pantry.</p>	<p><b>Tutoring:</b> Secure Title I/ELOP funding; implement train-the-trainer model.</p> <p><b>Home Visits:</b> Institutionalize referral and tracking systems.</p> <p><b>Campus Attendants:</b> Embed SEL training into onboarding/job descriptions.</p> <p><b>Clubs:</b> Partner with local organizations; use volunteer-led model.</p> <p><b>Food Program:</b> Formalize MOUs with food banks; establish recurring food drives.</p>

<p><b>Collaborative Leadership</b></p>	<p><b>Principal–CSF Meetings:</b> Monthly alignment meetings (18 total).</p> <p><b>CSF Integration:</b> Participation in staff meetings and attendance team.</p> <p><b>Community Room 3:</b> Staff/resource hub.</p> <p><b>Attendance Team:</b> CSF a member of the team</p> <p><b>Asset Mapping:</b> Identification of community partners.</p>	<p><b>Leadership Structures:</b> Shift to weekly CSF–Principal meetings.</p> <p><b>CS Liaison:</b> Create stipend-based teacher leadership role.</p> <p><b>Community Hub:</b> Expand Room 3 to include family services, ESL, and resources.</p> <p><b>Attendance Team:</b> Integrate CSF into Tier 2/3 planning.</p> <p><b>Asset Map:</b> Update annually and create a “Partner Menu.”</p>	<p><b>Leadership Systems:</b> Embed CSF role in site/district structures and bylaws.</p> <p><b>CS Liaison:</b> Fund through grants (e.g., Community Schools North Star).</p> <p><b>Community Hub:</b> Co-locate pantry, clothing closet, lending library.</p> <p><b>Attendance:</b> Standardize CSF role in team handbook.</p> <p><b>Asset Map:</b> Maintain a shared living document with assigned staff lead.</p>
--	---	--	---

<p><b>Expanded &amp; Enriched Learning Opportunities</b></p>	<p><b>Playworks &amp; Enrichment:</b> 325 TK–5 students engaged.</p> <p><b>Tickets for Kids:</b> 50+ students accessed cultural/sports events.</p> <p><b>Library Activities:</b> Games added for student engagement.</p> <p><b>Lacrosse Partnership:</b> 36 students participated (SD Seals).</p> <p><b>Recess Kits:</b> Plan to start a student-managed “Grab-and-Go” equipment system</p>	<p><b>Playworks:</b> Campus Attendants lead independently with fidelity.</p> <p><b>Tickets for Kids:</b> Expand to include transportation for grade-level trips.</p> <p><b>Library:</b> Expand activity offerings and access before school.</p> <p><b>PE Integration:</b> Add lacrosse to quarterly sports rotation.</p> <p><b>Recess Kits:</b> Student-managed “Grab-and-Go” equipment system.</p>	<p><b>Playworks:</b> Embed prep time into staff schedules (no overtime needed).</p> <p><b>Tickets for Kids:</b> Assign staff liaison to maintain partnership.</p> <p><b>Library:</b> Create student leadership team; budget for replacements.</p> <p><b>PE/Recess:</b> Build student ownership through leadership roles (equipment captains).</p> <p><b>Recess Kits:</b> Continue student-managed “Grab-and-Go” equipment system</p>
--	---	---	--

<b>Family &amp; Community Engagement</b>	<p><b>Summer Home Visits:</b> 12 completed.</p> <p><b>Community Coffee Hour:</b> Monthly (First Fridays).</p> <p><b>Welcome Gate:</b> Daily staff greeting for families.</p> <p><b>Community Incentives:</b> Event-based attendance boosters (Fall Fest, Open House).</p> <p><b>Attendance Celebrations:</b> Weekly Cougar Kickoff.</p>	<p><b>Home Visits:</b> Increase to 15; focus on relationship-building and family voice.</p> <p><b>Coffee &amp; Curriculum:</b> Add workshops with data updates; grow to 25+ attendees.</p> <p><b>Welcome Gate:</b> Continue daily staff greeting for families.</p> <p><b>Dinner with the Principal:</b> Launch small-group family engagement series.</p> <p><b>Attendance Recognition:</b> Implement Golden Attendance Award.</p>	<p><b>Home Visits:</b> Schedule within contract hours; focus on qualitative impact.</p> <p><b>Coffee Events:</b> Secure local business sponsorships; align with PTA.</p> <p><b>Welcome Gate:</b> Establish Parent Ambassador rotation.</p> <p><b>Events:</b> Use ASB/school climate funds; develop sponsor recognition systems.</p> <p><b>Attendance:</b> Institutionalize yearly tradition and calendar events.</p>
--	---	---	--

**LCAP Alignment**

This work aligns with **LCAP Goal 2: Engage**, focusing on student well-being, attendance, family engagement, and equitable access to support.

**Strategic Community Partnerships**

We partner with organizations to provide:

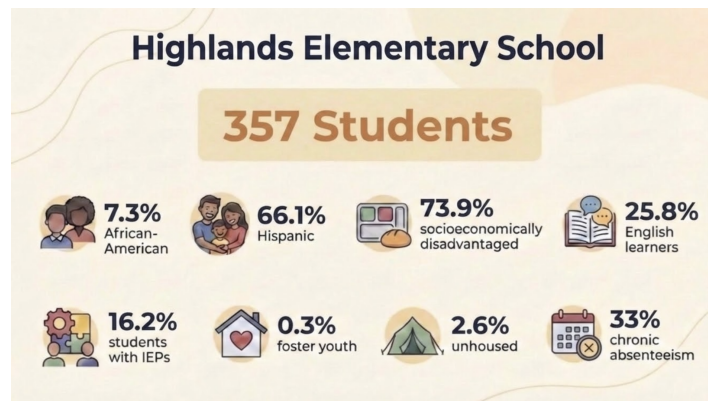
- Health and mental health services
- Educational and workforce opportunities
- Family and community engagement supports
- Food and basic needs resources
- School climate and enrichment program

## Highlands Elementary School - Principal: Melynda Pezone

### Goals and Priorities (2026–27)

**Highlands Elementary School** is entering year three of Community Schools implementation. Our focus is to continue building a whole-child community school model grounded in the four pillars: integrated student supports, family and community engagement, collaborative leadership, and expanded learning opportunities. This work will continue to grow and strengthen over the remaining years of the 5-year grant.

### School Overview



### Identified Needs

Families and students at **Highlands Elementary School** need increased support in the following areas:

- Social-emotional learning and student connectedness
- Access to health services (mental health, medical, dental, vision)
- School facilities and outdoor learning spaces
- Expanded after-school enrichment (arts, music, robotics, tutoring)
- Family support services (basic needs, ESL classes, and access to resources)

## Highlands Elementary Community School Implementation & Sustainability Plan

### LCAP Alignment

This work aligns with **LCAP Goal 2: Engage**, focusing on student well-being, attendance, family engagement, and equitable access to support.

### Strategic Community Partnerships

We partner with organizations to provide:

- Health and mental health services
- Educational and workforce opportunities
- Family and community engagement supports
- Food and basic needs resources
- School climate and enrichment program

**Highlands Elementary School Implementation & Sustainability Plan**

Community Schools Pillar	Current Activities (2025–26)	Proposed Activities (2026–27)	Sustainability Plan
<b>Integrated Student Supports</b>	After-school tutoring provided by certificated teachers during Trimester 2	Expand after-school tutoring through partnerships with community organizations to provide consistent support	Establish ongoing partnerships with community providers; identify additional funding sources (e.g., Title I) to sustain tutoring
	Big Smiles Dental clinic visits school site	Continue partnership with dental clinic; increase to twice per year	Maintain established partnership to ensure ongoing access to dental services
	Vision screening and eyeglasses provided through clinic partnership	Continue vision screening and eyeglass services at least once per year	Maintain partnership to ensure continued access to vision services
<b>Family &amp; Community Engagement (FACE)</b>	Family Math Night with Mathnasium (32 families attended)	Host two Math Nights; increase attendance to 50 families	Gradual release to staff to plan and facilitate events independently
	Family/community events held approximately every other month	Continue events with a focus on increasing attendance and strengthening partnerships	Gradual transition of planning and implementation to PTA

	Parent workshops offered every 2 months/as needed	Continue workshops to increase family engagement and involvement	Build consistent structures and routines for ongoing parent learning opportunities
	Monthly food distribution through community partnerships	Continue monthly food distribution with consistent scheduling	Establish a set schedule; involve student leadership to support preparation and distribution
<b>Collaborative Leadership</b>	Bi-weekly Principal and CSF meetings	Continue regular meetings focused on Community Schools goals and alignment	Use meetings to monitor progress and sustain site-based systems and priorities
	CSF attendance at SSC meetings	Continue CSF participation; increase staff involvement in SSC	Build broader staff capacity and shared leadership in decision-making structures
	Parent workshops facilitated by principal	Continue principal-led parent learning series	Maintain consistent engagement structures to support family involvement
<b>Expanded &amp; Enriched Learning Opportunities</b>	After-school enrichment serving ~200 students (ArtBeat, Rebel Soccer Club)	Continue and expand enrichment opportunities for students	Support sustainability through fundraising and/or small participation fees
	Playworks implementation with CSF support	Continue Playworks implementation and integration into recess	Train campus attendants annually; build internal capacity to sustain program

	Campus attendant training provided	Continue annual training and onboarding for new staff	Develop internal systems for ongoing training and peer-to-peer support
--	------------------------------------	---	--

**LCAP Alignment**

This work aligns with **LCAP Goal 2: Engage**, focusing on student well-being, attendance, family engagement, and equitable access to support.

**Strategic Community Partnerships**

We partner with organizations to provide:

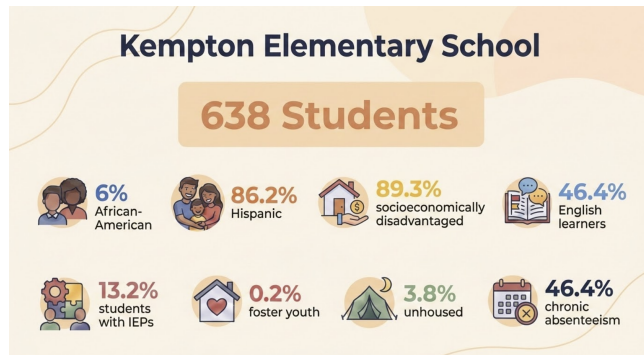
- Health and mental health services
- Educational and workforce opportunities
- Family and community engagement supports
- Food and basic needs resources
- School climate and enrichment program

**Kempton Elementary School - Principal: Janet Josa**

**Goals and Priorities (2026–27)**

**Kempton Elementary School** is entering year three of Community Schools implementation. Our focus is to continue building a whole-child community school model grounded in the four pillars: integrated student supports, family and community engagement, collaborative leadership, and expanded learning opportunities. This work will continue to grow and strengthen over the remaining years of the 5-year grant.

**School Overview**



**Identified Needs**

Families and students at **Kempton Elementary School** need increased support in the following areas:

- Social-emotional learning and student connectedness
- Access to health services (mental health, medical, dental, vision)
- School facilities and outdoor learning spaces
- Expanded after-school enrichment (arts, music, robotics, tutoring)
- Family support services (basic needs, ESL classes, and access to resources)

**Kempton Elementary Community School Implementation & Sustainability Plan**

Community Schools Pillar	Current Activities (2025–26)	Proposed Activities (2026–27)	Sustainability Plan for Each Item
<p><b>Integrated Student Supports</b></p>	<p><b>Tutoring:</b> Grades 1–2 supported by 3 teachers and 1 para; ~50 students served.  <b>Home Visits:</b> ~25 intervention visits during school year; 60 positive visits over summer.  <b>Health Services:</b> 34 eye exams/33 glasses (Lions Club); 67 students served by Big Smiles Dental.</p>	<p><b>Tutoring:</b> Expand to 75+ students; explore partnerships with high school/college tutors.  <b>Home Visits:</b> Continue attendance-based and positive visits during the school year; maintain summer visits; explore adding year-round positive visits.  <b>Health Services:</b> Continue partnerships; increase to 50+ students served in both vision and dental.</p>	<p><b>Tutoring:</b> Seek grant funding; utilize community service partnerships. <b>Home Visits:</b> Use existing staff time during school day; explore grants or site funding for expansion.  <b>Health Services:</b> Maintain partnerships; explore family contributions or private donations; coordinate with Health Tech and nurse.</p>

<p><b>Family &amp; Community Engagement</b></p>	<p><b>Parent Workshops (8):</b> Topics included career readiness, brain development, scams, executive functioning, SEL, and technology. <b>Volunteer Orientation:</b> 21 parents attended. <b>ESL Classes:</b> 57 adults served (GCCD partnership); childcare for ~40 children; 3 registration nights. <b>PTA Events:</b> Glow Dance, Carnival, Bubble Run. <b>SSC &amp; ELAC:</b> 5 meetings each; ~9 parents per meeting.</p>	<p>Continue workshops based on family needs and requests. Refine volunteer orientation materials. Continue ESL classes (Fall/Spring); explore adding a second class; maintain registration nights. Add financial literacy night. Increase SSC/ELAC attendance to 12 parents per meeting.</p>	<p><b>Workshops:</b> Continue leveraging no-cost presenters; CSF coordinates. <b>Volunteer Program:</b> Staff or PTA-led; no additional funding needed. <b>ESL:</b> Sustain through partnerships; utilize volunteers for registration support. <b>Events:</b> Partner with PTA for funding (snacks/materials). <b>SSC/ELAC:</b> Ongoing parent education and outreach.</p>
<p><b>Collaborative Leadership</b></p>	<p><b>Attendance Team:</b> Weekly meetings with admin, health tech, social worker, CSF. <b>CCS Meetings:</b> 8 meetings with staff, admin, social worker, and parent participation. <b>PTA Meetings:</b> 11 meetings; supported multiple events. <b>Campus Attendant Meetings:</b> 6 meetings, including 4 Playworks check-ins.</p>	<p>Continue weekly attendance meetings. Recruit new parents for CCS meetings. Maintain PTA collaboration and increase parent involvement. Strengthen role of Campus Attendants and Junior Coaches in Playworks implementation.</p>	<p>No funding required; relies on staff participation and shared leadership. Maintain Playworks equipment through site budget. Explore adjunct duty roles for staff to support Junior Coaches and Playworks.</p>

<p><b>Expanded &amp; Enriched Learning Opportunities</b></p>	<p><b>Art Club:</b> 45 students served across grade bands. <b>i9 Sports:</b> Multiple sessions (soccer, volleyball, basketball); ~25–28 students per session. <b>Cooking Classes:</b> 45 students + 20 families served. <b>Dance (Heartlight):</b> 100 students served; 6 full scholarships. <b>Theater (GCC):</b> 273 students attended performances. <b>Solana Center:</b> 165 students served. <b>Helen Woodward:</b> 50 students served. <b>Junior Coaches:</b> 19 students trained. <b>Field Trip:</b> 42 students attended Torrey Pines trip. <b>La Jolla Playhouse:</b> 108 students attended. <b>Safe School Ambassadors:</b> 26 students; 10 meetings. <b>Playworks:</b> 445 TK–5 students supported.</p>	<p>Continue all programs where feasible. Expand extracurricular offerings through grants and partnerships. Adjust grade levels and participation as needed. Continue Junior Coach and SSA leadership development. Explore new field trip opportunities.</p>	<p>Seek grants, private donations, and family contributions to sustain programs. Work with partners to reduce program costs. Train staff to independently manage programs (Playworks, SSA, Junior Coaches). Maintain budget line items for supplies and transportation.</p>
--	--	---	---

**LCAP Alignment**

This work aligns with **LCAP Goal 2: Engage**, focusing on student well-being, attendance, family engagement, and equitable access to support.

**Strategic Community Partnerships**

We partner with organizations to provide:

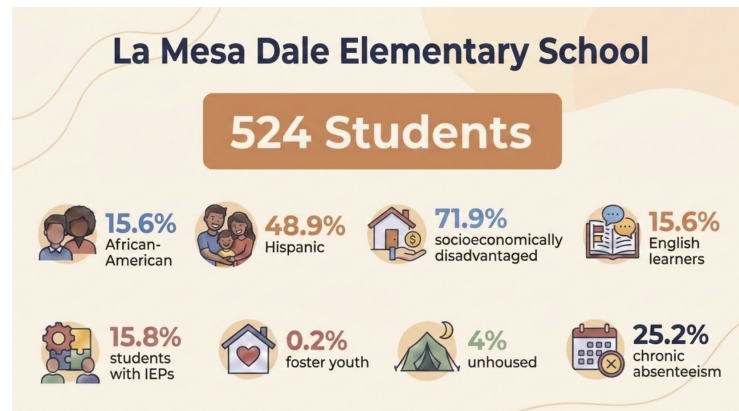
- Health and mental health services
- Educational and workforce opportunities
- Family and community engagement supports
- Food and basic needs resources
- School climate and enrichment program

## La Mesa Dale Elementary School - Principal: Tammie Babbitt

### Goals and Priorities (2026–27)

**La Mesa Dale Elementary School** is entering year three of Community Schools implementation. Our focus is to continue building a whole-child community school model grounded in the four pillars: integrated student supports, family and community engagement, collaborative leadership, and expanded learning opportunities. This work will continue to grow and strengthen over the remaining years of the 5-year grant.

### School Overview



### Identified Needs

Families and students at **La Mesa Dale Elementary School** need increased support in the following areas:

- Social-emotional learning and student connectedness
- Access to health services (mental health, medical, dental, vision)
- School facilities and outdoor learning spaces
- Expanded after-school enrichment (arts, music, robotics, tutoring)
- Family support services (basic needs, ESL classes, and access to resources)

**La Mesa Dale Elementary Community School Implementation & Sustainability Plan**

Community Schools Pillar	Current Activities (2025–26)	Proposed Activities (2026–27)	Sustainability Plan for Each Item
<p><b>Integrated Student Supports</b></p>	<p><b>Tutoring:</b> ~50 students (Grades 2–4) supported in math.</p> <p><b>Dino School (SDYS):</b> 94 students and 34 parents/guardians served.</p> <p><b>Military Support (Purple Star):</b> ~90 military-connected students supported.</p>	<p><b>Tutoring:</b> Expand to 65 students; add after-school homework club.</p> <p><b>Dino School:</b> Increase student and family participation by 10%; add 8-week Garden &amp; Emotional Coping workshop.</p> <p><b>Military Support:</b> Launch Military-Connected Student Ambassador (Buddy) Program.</p>	<p><b>Tutoring:</b> Leverage PTA, site funds, and community partnerships; recruit volunteers (e.g., Helix High Future Teacher Pathway).</p> <p><b>Dino School:</b> Sustain through staff promotion; program provided at no cost (County partnership).</p> <p><b>Military Support:</b> Ongoing support from teachers, military-connected staff, and social worker; monthly check-ins built into existing structures.</p>

<p><b>Family &amp; Community Engagement</b></p>	<p><b>Family Math &amp; Science Night:</b> 89 families attended.  <b>Family Reading Night:</b> 100 families attended.  <b>CRC Open House:</b> 45 families attended.  <b>Cafe Connect:</b> Avg. 15 parents per session.</p>	<p><b>Math &amp; Science Night:</b> Continue with staff-led, hands-on STEM activities. <b>Reading Night:</b> Add literacy games and book giveaways; promote home reading.  <b>CRC Open House:</b> Increase attendance to 60 families; expand access to community resources.  <b>Cafe Connect:</b> Continue bi-monthly; increase to 20 participants; add community-led parent education.</p>	<p><b>Events:</b> Use blended funding (PTA, site funds, community sponsorships).  <b>Reading Night:</b> Sustained through staff planning and site prioritization.  <b>CRC:</b> Partner with local organizations to provide resources and services.  <b>Cafe Connect:</b> Low-cost; supported through donations and partnerships.</p>
<p><b>Collaborative Leadership</b></p>	<p><b>Principal–CSF Meetings:</b> Weekly (30 meetings).  <b>Classified Staff Training:</b> Playworks-related support for campus attendants and paraprofessionals.  <b>CSF/Social Worker Check-ins:</b> Monthly (11 meetings).</p>	<p>Establish site advisory teams with teacher leads; expand CSF role across PTA, SSC, ELAC, and leadership groups. Continue staff training with additional opportunities beyond work hours. Maintain regular CSF/Social Worker collaboration for student support.</p>	<p><b>Leadership Structures:</b> Embed CSF in site leadership systems.  <b>Training:</b> Provide job-embedded PD (micro-sessions, staff newsletters). <b>Collaboration:</b> Maintain monthly meetings; align support for attendance and mental health.</p>

<p><b>Expanded &amp; Enriched Learning Opportunities</b></p>	<p><b>Playworks:</b> 500 TK–5 students supported.  <b>Garden Instruction:</b> 300 students participated in NGSS-aligned lessons. <b>After-School Enrichment:</b> Lego and craft programs (~20 students per session). <b>Exploration Stations:</b> Bi-weekly for grades 4–5 (~160 students).</p>	<p><b>Playworks:</b> Increase staff independence and fidelity.  <b>Garden:</b> Expand to 400 students through increased teacher participation.  <b>Enrichment:</b> Increase to 30 students; add Jr. Authors Club; gather parent input via surveys.  <b>Exploration Stations:</b> Continue hands-on, inquiry-based learning opportunities.</p>	<p><b>Playworks:</b> Sustain through trained staff and existing structures.  <b>Garden/Enrichment:</b> Use PTA, site funds, and partnerships for support.  <b>Enrichment:</b> Staffing is primary cost; materials low-cost and reusable.  <b>Exploration Stations:</b> Sustained through collaborative planning; reuse materials across cycles.</p>
--	---	---	---

**LCAP Alignment**

This work aligns with **LCAP Goal 2: Engage**, focusing on student well-being, attendance, family engagement, and equitable access to support.

**Strategic Community Partnerships**

We partner with organizations to provide:

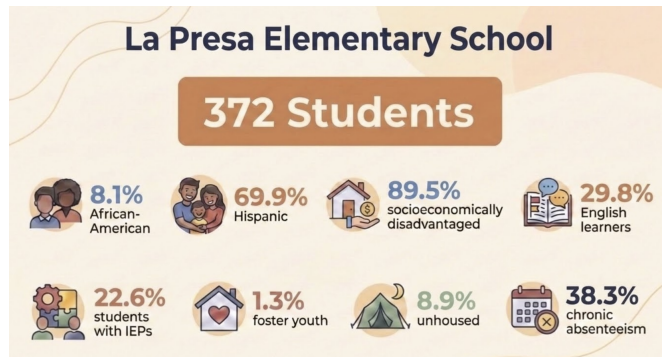
- Health and mental health services
- Educational and workforce opportunities
- Family and community engagement supports
- Food and basic needs resources
- School climate and enrichment program

## La Presa Elementary School - Principal: Eddie Iriqui

### Goals and Priorities (2026–27)

**La Presa Elementary School** is entering year three of Community Schools implementation. Our focus is to continue building a whole-child community school model grounded in the four pillars: integrated student supports, family and community engagement, collaborative leadership, and expanded learning opportunities. This work will continue to grow and strengthen over the remaining years of the 5-year grant.

### School Overview



### Identified Needs

Families and students at **La Presa Elementary School** need increased support in the following areas:

- Social-emotional learning and student connectedness
- Access to health services (mental health, medical, dental, vision)
- School facilities and outdoor learning spaces
- Expanded after-school enrichment (arts, music, robotics, tutoring)
- Family support services (basic needs, ESL classes, and access to resources)

**La Presa Elementary Community School Implementation & Sustainability Plan**

Community Schools Pillar	Current Activities (2025–26)	Proposed Activities (2026–27)	Sustainability Plan for Each Item
<p><b>Integrated Student Supports</b></p>	<p><b>Tutoring:</b> 63 students (Grades K, 1, 5) supported in math and reading.  <b>Accelerated Reading:</b> 105 students (Grades 3–5) supported.  <b>Vision Services:</b> Lion Vision Clinic providing eye exams.  <b>Home Visits:</b> Ongoing staff home visits to support families.</p>	<p><b>Tutoring:</b> Expand to 80 students; add Grades 2–4.  <b>Reading:</b> Increase independent reading opportunities; expand to K–2; target 80+ students.  <b>Vision:</b> Increase screenings to 90% of eligible students.  <b>Home Visits:</b> Increase visits by 30% to strengthen family engagement and student support.</p>	<p><b>Tutoring/Reading:</b> Use Title I, grants, and partnerships with local schools and organizations. <b>Vision:</b> Secure grants, partner with healthcare organizations, and explore community fundraising.  <b>Home Visits:</b> Embed into attendance and support systems; use shared protocols, tracking tools, and team-based approaches.</p>
<p><b>Family &amp; Community Engagement</b></p>	<p><b>Parent Workshops:</b> Ongoing workshops on parenting, academics, wellness, and SEL.  <b>School Partnerships:</b> Collaboration with other schools for events.  <b>ELAC Meetings:</b> Ongoing parent engagement and communication.</p>	<p>Offer at least two monthly workshops with 15+ participants; align topics to family needs. Increase joint events with other schools by 30% and participation by 20%. Increase ELAC participation to 75% of EL families.</p>	<p>Develop year-round workshop calendar; create core workshop series; train staff/parents to lead sessions. Leverage partnerships, volunteers, and shared resources to reduce costs. Maintain consistent communication and parent education to sustain engagement.</p>

<b>Collaborative Leadership</b>	<p><b>Principal–CSF Meetings:</b> Ongoing collaboration.</p> <p><b>Data Use:</b> Attendance and behavior discussions with staff and teams.</p> <p><b>School Events:</b> Collaboration with staff and community partners. <b>Attendance Meetings:</b> Ongoing campus attendance team meetings.</p>	<p>Establish site advisory teams; expand CSF role in PTA, SSC, ELAC, and leadership groups. Increase participation in data meetings by 30%; ensure 80% of teams develop action plans. Increase partnerships for school events by 25%. Maintain at least two attendance meetings per month.</p>	<p>Embed CSF in leadership structures and decision-making. Establish consistent monthly data review routines with staff and families. Build annual event calendar and strengthen partnerships with PTA and community organizations. Formalize attendance meetings within school systems and roles.</p>
<b>Expanded &amp; Enriched Learning Opportunities</b>	<p><b>Playworks/Enrichment:</b> ~200 students (Grades 3–5) served.</p> <p><b>After-School Programs:</b> ~220 students participated in enrichment and intervention programs.</p> <p><b>Student Activities:</b> Clubs, sports, and leadership opportunities available.</p>	<p>Increase after-school participation by 60%; expand enrichment offerings (STEM, arts, music, PE) by 25%. Continue partnerships (e.g., i9 Sports, Yoga Racals) and add new partners based on needs assessment. Expand field trips and hands-on learning opportunities. Increase student participation through clubs and leadership opportunities.</p>	<p>Secure funding through district allocations, grants, and community partnerships. Integrate enrichment into long-term school planning. Maintain partnerships with organizations and museums. Develop student leadership to sustain programs; engage families in activities and events.</p>

**LCAP Alignment**

This work aligns with **LCAP Goal 2: Engage**, focusing on student well-being, attendance, family engagement, and equitable access to support.

**Strategic Community Partnerships**

We partner with organizations to provide:

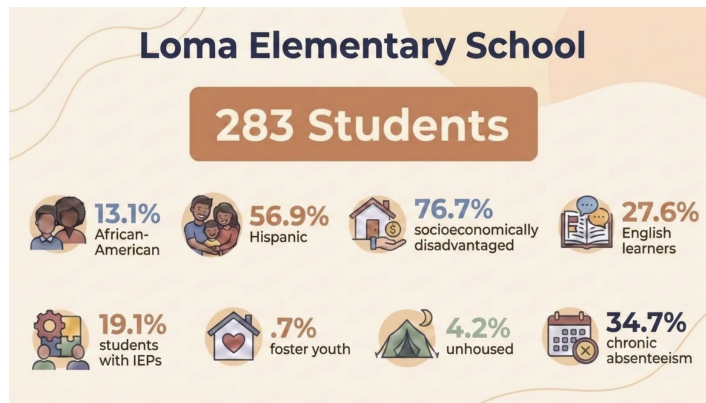
- Health and mental health services
- Educational and workforce opportunities
- Family and community engagement supports
- Food and basic needs resources
- School climate and enrichment program

## Loma Elementary School - Principal: Tara Bernal

### Goals and Priorities (2026–27)

**Loma Elementary School** is entering year three of Community Schools implementation. Our focus is to continue building a whole-child community school model grounded in the four pillars: integrated student supports, family and community engagement, collaborative leadership, and expanded learning opportunities. This work will continue to grow and strengthen over the remaining years of the 5-year grant.

### School Overview



### Identified Needs

Families and students at **Loma Elementary School** need increased support in the following areas:

- Social-emotional learning and student connectedness
- Access to health services (mental health, medical, dental, vision)
- School facilities and outdoor learning spaces
- Expanded after-school enrichment (arts, music, robotics, tutoring)
- Family support services (basic needs, ESL classes, and access to resources)

### Loma Elementary Community School Implementation & Sustainability Plan

Community Schools Pillar	Current Activities (2025–26)	Proposed Activities (2026–27)	Sustainability Plan for Each Item
<b>Integrated Student Supports</b>	<p><b>Tutoring:</b> 90 TK–5 students supported in math and reading.</p> <p><b>Vision Services:</b> 20 TK–5 students received eye exams (Lions Vision Clinic).</p> <p><b>Food Pantry:</b> Monthly distribution serving 20 families.</p>	<p><b>Tutoring:</b> Develop a system to identify students with greatest need; explore partnership with Monte Vista for support.</p> <p><b>Vision:</b> Increase participation to 90% of eligible students.</p> <p><b>Food Pantry:</b> Increase distribution to biweekly.</p>	<p><b>Tutoring:</b> Build school partnerships and targeted referral systems.</p> <p><b>Vision:</b> Partner with local Lions Club; pursue grant funding.</p> <p><b>Food Pantry:</b> Secure ongoing funding; partner with community food distribution organizations.</p>
<b>Family &amp; Community Engagement</b>	<p><b>Family Lunch Day:</b> Avg. 175 families attend.</p> <p><b>Family Science Night:</b> Partnership with Reuben H. Fleet and Zovargo.</p> <p><b>Multicultural Festival:</b> 350 attendees; partnerships with international houses.</p> <p><b>Family Read Day:</b> 323 participants; partnerships with local libraries.</p> <p><b>Parents as Partners Meetings:</b> 13 participants.</p>	<p><b>Family Lunch Day:</b> Add structured activities for families. <b>Science Night:</b> Increase participation by 10%. <b>Multicultural Festival:</b> Add 1 additional cultural partner; strengthen Balboa Park partnerships.</p> <p><b>Family Read Day:</b> Add 1 new literacy partnership.</p> <p><b>Parent Meetings:</b> Increase participation to 15; expand workshop offerings.</p>	<p><b>Events:</b> Partner with local vendors, restaurants, and community organizations. <b>Science &amp; Multicultural Events:</b> Create committees (1 teacher + 2 parents) to lead planning. <b>Literacy:</b> Maintain library partnerships.</p> <p><b>Parent Engagement:</b> Partner with experts to lead workshops; build consistent programming.</p>

<p><b>Collaborative Leadership</b></p>	<p><b>Principal–CSF Meetings:</b> Monthly (8 meetings).  <b>Attendance Meetings:</b> Monthly CSF/SSW meetings (8 meetings).  <b>Campus Attendant Meetings:</b> Weekly (32 meetings).  <b>ELAC:</b> 4 meetings; 12 families participating.</p>	<p>Establish site advisory teams; expand CSF role in PTA, SSC, ELAC, and leadership groups.  <b>Attendance:</b> Develop Tier 1–3 strategies and incentives; include at least 1 teacher in meetings.  <b>Campus Attendants:</b> Strengthen training on behavior, engagement, and conflict resolution.  <b>ELAC:</b> Increase participation by 10%.</p>	<p><b>Leadership:</b> Embed CSF in site leadership structures.  <b>Attendance:</b> Formalize meeting structures and shared strategies.  <b>Campus Attendants:</b> Partner with organizations to provide training; build internal capacity.  <b>ELAC:</b> Promote shared learning and consistent engagement.</p>
<p><b>Expanded &amp; Enriched Learning Opportunities</b></p>	<p><b>Playworks:</b> 350 TK–5 students served; supported by campus attendants.  <b>Independent Study Support:</b> 30 students supported.  <b>Jr. Coach Program:</b> 25 students (Grades 4–5).  <b>Garden Program:</b> 350 TK–5 students participated.</p>	<p><b>Playworks:</b> Ensure consistent implementation; train new staff.  <b>Independent Study:</b> Increase participation by 10%; expand meeting support.  <b>Jr. Coaches:</b> Partner with community athletes to support leadership and sportsmanship.  <b>Garden:</b> Maintain program; add parent volunteers.</p>	<p><b>Playworks:</b> Train campus attendants; embed in onboarding.  <b>Independent Study:</b> Increase teacher involvement and structured support.  <b>Jr. Coaches:</b> Build partnerships; ensure staff oversight.  <b>Garden:</b> Sustain through volunteer support and staff integration.</p>

**LCAP Alignment**

This work aligns with **LCAP Goal 2: Engage**, focusing on student well-being, attendance, family engagement, and equitable access to support.

**Strategic Community Partnerships**

We partner with organizations to provide:

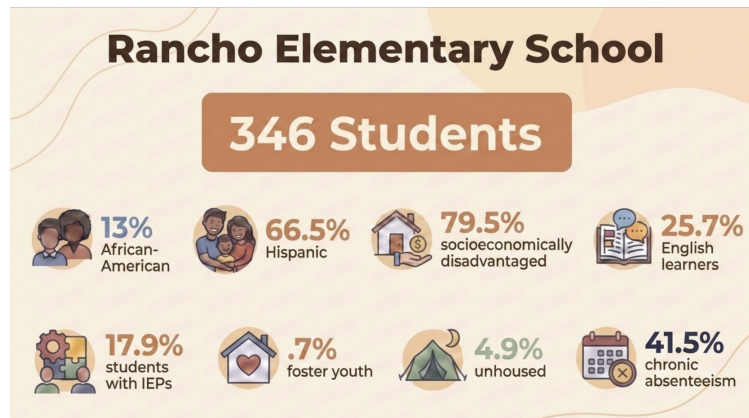
- Health and mental health services
- Educational and workforce opportunities
- Family and community engagement supports
- Food and basic needs resources
- School climate and enrichment program

**Rancho Elementary School - Principal: Stibaly Johnson**

**Goals and Priorities (2026–27)**

**Rancho Elementary School** is entering year three of Community Schools implementation. Our focus is to continue building a whole-child community school model grounded in the four pillars: integrated student supports, family and community engagement, collaborative leadership, and expanded learning opportunities. This work will continue to grow and strengthen over the remaining years of the 5-year grant.

**School Overview**



**Identified Needs**

Families and students at **Rancho Elementary School** need increased support in the following areas:

- Social-emotional learning and student connectedness
- Access to health services (mental health, medical, dental, vision)
- School facilities and outdoor learning spaces
- Expanded after-school enrichment (arts, music, robotics, tutoring)
- Family support services (basic needs, ESL classes, and access to resources)

Rancho Elementary Community School Implementation & Sustainability Plan

Community Schools Pillar	Current Activities (2025–26)	Proposed Activities (2026–27)	Sustainability Plan for Each Item
<p><b>Integrated Student Supports</b></p>	<p><b>Tutoring:</b> 55 students (Grades 3–5) supported in math and reading.</p> <p><b>Garden &amp; Chicken Program:</b> “Seed-to-Table” garden and poultry habitat for hands-on learning.</p> <p><b>Food Support:</b> 36 families served monthly through Moni Food Bank.</p>	<p><b>Tutoring:</b> Expand to 70 students; include Grades K–2.</p> <p><b>Garden Program:</b> Integrate harvest into cafeteria; add student-led “Chicken Crew.”</p> <p><b>Food Support:</b> Expand to 40 families; establish on-site pantry.</p>	<p><b>Tutoring:</b> Establish MOUs with colleges for tutors; leverage Title I funding.</p> <p><b>Garden:</b> Partner with Master Gardeners; fund through produce/egg sales.</p> <p><b>Food Support:</b> Formalize food bank partnerships; create recurring food drives.</p>
<p><b>Family &amp; Community Engagement</b></p>	<p><b>Family Reading Fridays:</b> Monthly events with 113–160 attendees.</p> <p><b>Morning Greetings:</b> Daily staff welcome for families.</p> <p><b>Community Circle:</b> Weekly relationship-building and recognition.</p>	<p>Expand Reading Fridays with 3 business partners. Add multilingual welcome signage. Launch Coffee &amp; Curriculum workshops with academic data focus (25+ attendees).</p>	<p><b>Events:</b> Partner with businesses for funding and resources.</p> <p><b>Welcome Culture:</b> Establish Parent Ambassador rotation.</p> <p><b>Workshops:</b> Secure local sponsorships; integrate costs into PTA budget.</p>

<p><b>Collaborative Leadership</b></p>	<p><b>Principal–CSF Meetings:</b> Monthly collaboration.  <b>Attendance Team:</b> CSF participates in multi-tiered support. <b>Asset Mapping:</b> Identified community partners.  <b>Staff Integration:</b> CSF participates in staff meetings.</p>	<p>Shift to weekly Principal–CSF meetings. Integrate CSF into Tier 2/3 planning; target 5% reduction in chronic absenteeism. Update asset map annually; create partner request system. Create teacher liaison role to support implementation.</p>	<p><b>Leadership:</b> Embed CSF role in site and district structures.  <b>Attendance:</b> Standardize CSF role within attendance systems.  <b>Asset Map:</b> Maintain as a shared, living document with assigned lead. <b>Staffing:</b> Fund liaison role through grants (e.g., Community Schools North Star).</p>
<p><b>Expanded &amp; Enriched Learning Opportunities</b></p>	<p><b>Playworks:</b> 325 TK–5 students supported.  <b>SD Seals Lacrosse:</b> 150 students participated. <b>Lunch Activities:</b> 20 students participated in alternative lunch programming.  <b>Tickets for Kids:</b> 50+ students accessed enrichment opportunities.  <b>i9 Sports:</b> 50 students participated as attendance incentive.</p>	<p>Integrate lacrosse into PE rotation. Create student-led recess kits and leadership roles. Expand field trips with transportation support. Use sports participation as an attendance incentive for targeted students.</p>	<p><b>Playworks:</b> Train campus staff; embed into routines.  <b>Enrichment:</b> Maintain partnerships; assign staff liaison.  <b>Recess Kits:</b> Fund through site budget or donations; student-led management. <b>Sports:</b> Offset costs through CS funds, scholarships, and Title I.</p>

**LCAP Alignment**

This work aligns with **LCAP Goal 2: Engage**, focusing on student well-being, attendance, family engagement, and equitable access to support.

**Strategic Community Partnerships**

We partner with organizations to provide:

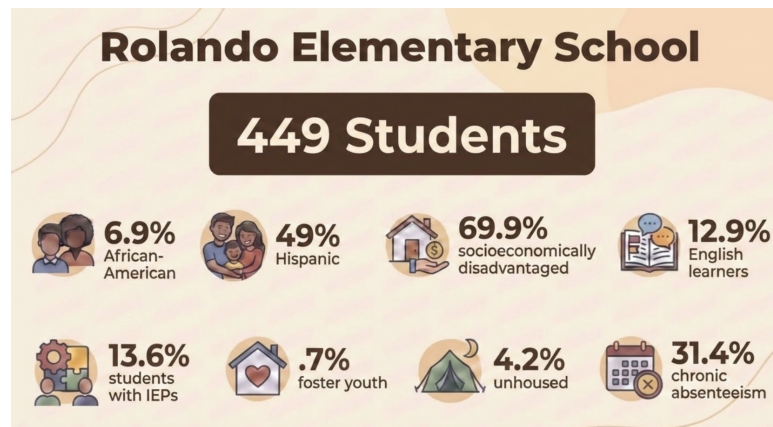
- Health and mental health services
- Educational and workforce opportunities
- Family and community engagement supports
- Food and basic needs resources
- School climate and enrichment program

## Rolando Elementary School - *Principal: Ben Klaus*

### Goals and Priorities (2026–27)

**Rolando Elementary School** is entering year three of Community Schools implementation. Our focus is to continue building a whole-child community school model grounded in the four pillars: integrated student supports, family and community engagement, collaborative leadership, and expanded learning opportunities. This work will continue to grow and strengthen over the remaining years of the 5-year grant.

### School Overview



### Identified Needs

Families and students at **Rolando Elementary School** need increased support in the following areas:

- Social-emotional learning and student connectedness
- Access to health services (mental health, medical, dental, vision)
- School facilities and outdoor learning spaces
- Expanded after-school enrichment (arts, music, robotics, tutoring)
- Family support services (basic needs, ESL classes, and access to resources)

**Rolando Elementary Community School Implementation & Sustainability Plan**

Community Schools Pillar	Current Activities (2025–26)	Proposed Activities (2026–27)	Sustainability Plan for Each Item
<p><b>Integrated Student Supports</b></p>	<p><b>Student Leadership:</b> Safe School Ambassadors (28), Junior Coaches (37), Green Team (21), Student Council (8); total 94 students.  <b>OASIS Tutoring:</b> 11 students served.  <b>Health Services:</b> Big Smiles/Lions Vision Care served 50 students.  <b>5th Grade Legacy Project:</b> 68 students.  <b>Structured Play:</b> 360 students engaged in safe, productive play.</p>	<p><b>Student Leadership:</b> Expand participation and increase student ownership (goal: 110 students).  <b>Tutoring:</b> Increase participation to 15 students; expand math pilot and tutor pool.  <b>Health Services:</b> Increase access to 100 students.  <b>Legacy Project:</b> Continue with student-led design (68 students).  <b>Structured Play:</b> Increase variety of playground activities.</p>	<p><b>Leadership:</b> Maintain partnerships with staff and parent volunteers; expand to 120 students.  <b>Tutoring:</b> Sustain OASIS partnership; increase capacity to 20 students.  <b>Health Services:</b> Maintain partnerships with providers and district support.  <b>Legacy Project:</b> Sustain through private donations.  <b>Play:</b> Maintain site budget line item for equipment replacement.</p>
<p><b>Family &amp; Community Engagement</b></p>	<p><b>Community Meetings:</b> 90 participants. <b>Adopt-a-Beach/Garden Day:</b> 60 participants.  <b>Casa de Mosaic:</b> 360 students served.</p>	<p>Increase Community Meeting participation by 20% (goal: 110). Expand family engagement opportunities beyond school (goal: 100 participants). Explore expanding Casa de Mosaic from 1 to 2 days per week.</p>	<p>Maintain participation through targeted outreach and marketing. Sustain engagement through free or low-cost experiences. Maintain existing partnerships (e.g., Casa de Mosaic).</p>

<p><b>Collaborative Leadership</b></p>	<p><b>Principal–CSF Collaboration:</b> Ongoing meetings; CSF participates in PTA, ELAC, SSC.  <b>Family Communication:</b> CSF manages newsletters and outreach.  <b>Needs Assessment:</b> Ongoing outreach and stakeholder engagement.  <b>CSF Team Meetings:</b> Regular participation.</p>	<p>Continue embedding CSF in leadership teams and decision-making structures. Expand communication systems across ParentSquare, social media, and teacher channels. Continue needs assessments and share results to guide action. Increase collaboration across staff.</p>	<p>Maintain regular meeting structures (weekly/monthly as needed). Sustain communication systems through CSF leadership. Continue stakeholder engagement and data-driven planning.</p>
<p><b>Expanded &amp; Enriched Learning Opportunities</b></p>	<p><b>Playworks:</b> 360 TK–5 students served; supported by campus attendants.  <b>SciCooks:</b> 48 participants.  <b>Garden Program:</b> 360 students (schoolwide).</p>	<p><b>Playworks:</b> Maintain implementation; train new campus attendants annually.  <b>SciCooks:</b> Increase participation by 25%; expand to 2 sessions/year (goal: 100 participants).  <b>Garden:</b> Continue instruction and expand community involvement.</p>	<p><b>Playworks:</b> Train staff and embed into onboarding practices.  <b>SciCooks:</b> Sustain through fundraising or nominal fees.  <b>Garden:</b> Maintain through community partnerships and classroom rotations.</p>

**LCAP Alignment**

This work aligns with **LCAP Goal 2: Engage**, focusing on student well-being, attendance, family engagement, and equitable access to support.

**Strategic Community Partnerships**

We partner with organizations to provide:

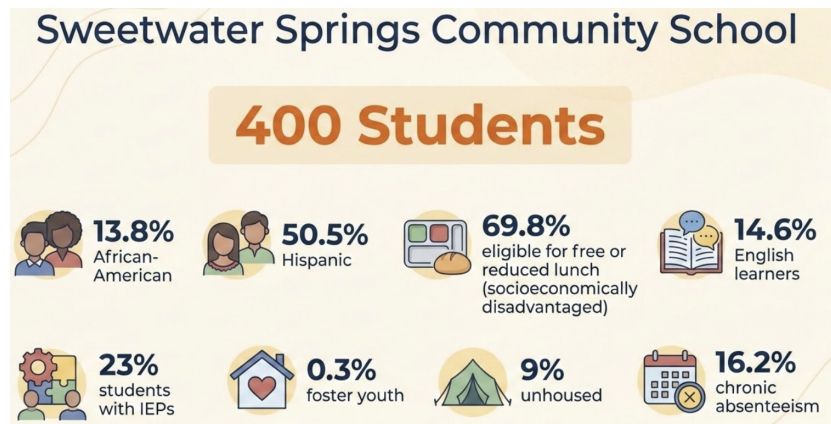
- Health and mental health services
- Educational and workforce opportunities
- Family and community engagement supports
- Food and basic needs resources
- School climate and enrichment program

## Sweetwater Springs Community School - Principal: Kelli Maringer

### Goals and Priorities (2026–27)

Sweetwater Springs Elementary is entering year three of Community Schools implementation. Our focus is to continue building a whole-child community school model grounded in the four pillars: integrated student supports, family and community engagement, collaborative leadership, and expanded learning opportunities. This work will continue to grow and strengthen over the remaining years of the 5-year grant.

### School Overview



### Identified Needs

Families and students at **Sweetwater Springs** need increased support in the following areas:

- Social-emotional learning and student connectedness
- Access to health services (mental health, medical, dental, vision)
- School facilities and outdoor learning spaces
- Expanded after-school enrichment (arts, music, robotics, tutoring)
- Family support services (basic needs, ESL classes, and access to resources)

Sweetwater Springs Community School Implementation & Sustainability Plan

Pillar	Current Activities (2025–26)	Proposed Activities (2026–27)	Sustainability Plan
<p><b>Integrated Student Supports</b></p>	<p><b>Tutoring:</b> 25 students (K–5) supported through partnership. <b>Hawk’s Harvest Pantry:</b> Serves ~40 families biweekly; includes hygiene items and food; participation has doubled.  <b>Health Services:</b> Attempted vaccination clinic; successful dental and vision clinics (Lion’s Club).</p>	<p><b>Tutoring:</b> Expand to 50 students; increase hours; add high school/college tutors for after-school support.  <b>Hawk’s Harvest:</b> Expand access from ¼ to ½ of families; continue appointments; add beginning- and end-of-year resource events. <b>Health Services:</b> Host two vaccine events and one mental health resource fair; continue clinic partnerships.</p>	<p>Utilize site funds where needed. Build partnerships with colleges, high schools, senior centers, and community organizations. Continue partnerships with food banks, churches, and nonprofits. Leverage free county health services.</p>
<p><b>Family &amp; Community Engagement</b></p>	<p><b>1st Tuesdays:</b> Monthly events with 15–25 attendees.  <b>Family Days:</b> ~100 participants per event.  <b>Positive Home Visits:</b> ~23 visits completed.  <b>Skyhawk Circle:</b> Weekly meetings with limited parent participation.</p>	<p>Increase attendance at 1st Tuesdays with themed events focused on student health and development; provide groceries/resources. Continue Family Days with added elements (book swaps, free books). Increase Positive Home Visits to 30 using outreach strategies and incentives. Increase parent participation in Skyhawk Circle.</p>	<p>Use low/no-cost strategies. Seek donations and community support. Utilize volunteers and potential grant funding. Partner with community organizations for ongoing support.</p>

<b>Collaborative Leadership</b>	Community Schools meetings. Weekly Principal–CSF meetings. Participation in SSC, ELAC, and Attendance Team meetings. Attendance incentives (STRIVE to Arrive).	Increase collaboration with nearby schools (e.g., Highlands). Maintain weekly Principal–CSF meetings. Continue participation in SSC, ELAC, and attendance efforts. Provide targeted support for high-need groups (by grade level and unhoused students).	Maintain existing meeting structures. Use community partnerships to support incentives and events. Focus on targeted, sustainable interventions for high-need students.
<b>Expanded &amp; Enriched Learning Opportunities</b>	<b>After-school sports:</b> ~30 students participating. <b>Art project:</b> Black History Month project for one 5th grade class. <b>Junior Coaches:</b> ~10 students supporting TK/K at recess.	Double participation in after-school sports; expand to four sports. Expand arts programming to all 4th and 5th grade students; develop after-school arts opportunities. Launch pen pal program (TK/K–5th grade). Expand student volunteer opportunities campus-wide.	Seek external funding and partnerships (community organizations, college clubs). Prioritize low/no-cost programming. Embed student leadership opportunities into school structures.

**LCAP Alignment**

This work aligns with **LCAP Goal 2: Engage**, focusing on student well-being, attendance, family engagement, and equitable access to support.

**Strategic Community Partnerships**

We partner with organizations to provide:

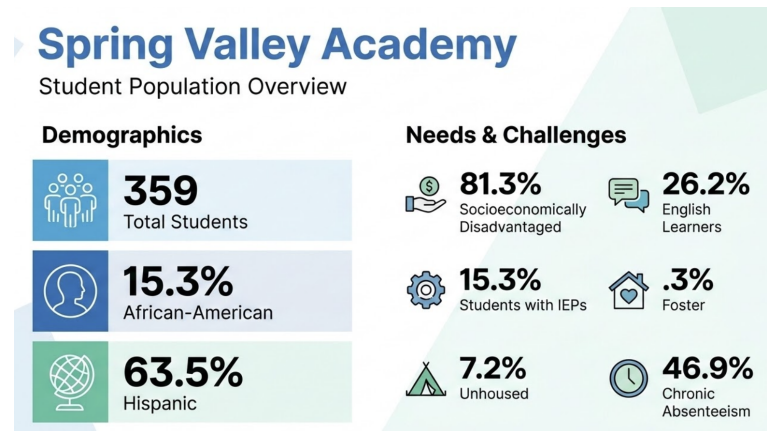
- Health and mental health services
- Educational and workforce opportunities
- Family and community engagement supports
- Food and basic needs resources
- School climate and enrichment programs

## Spring Valley Academy - Principal: Amy Isbell

### Goals and Priorities (2026–27)

**Spring Valley Academy** is entering year three of Community Schools implementation. Our focus is to continue building a whole-child community school model grounded in the four pillars: integrated student supports, family and community engagement, collaborative leadership, and expanded learning opportunities. This work will continue to grow and strengthen over the remaining years of the 5-year grant.

### School Overview



### Identified Needs

Families and students at **Spring Valley Academy** need increased support in the following areas:

- Social-emotional learning and student connectedness
- Access to health services (mental health, medical, dental, vision)
- School facilities and outdoor learning spaces
- Expanded after-school enrichment (arts, music, robotics, tutoring)
- Family support services (basic needs, ESL classes, and access to resources)

**Spring Valley Academy Community School Implementation & Sustainability Plan**

Community Schools Pillar	Current Activities (2025–26)	Proposed Activities (2026–27)	Sustainability Plan for Each Item
<p><b>Integrated Student Supports</b></p>	<p><b>Tutoring:</b> 50 students (Grades 3–5) supported in math and reading; after-school tutoring led by 4 teachers.  <b>Student Engagement:</b> Informal lunchtime activities.  <b>Attendance Supports:</b> Ongoing concerns for some students.  <b>Community Wraparound:</b> Support services in place.</p>	<p><b>Tutoring:</b> Expand to 60 students; include Grades K–2; strengthen with structured curriculum and progress monitoring.  <b>Engagement:</b> Develop structured recess/enrichment model with activity zones and student leadership.  <b>Attendance:</b> Launch Attendance Success Initiative with outreach, incentives, and family support.  <b>Wraparound:</b> Strengthen through SST/MTSS-aligned team approach.</p>	<p><b>Tutoring:</b> Build partnerships with universities/community orgs; use shared data systems.  <b>Engagement:</b> Train campus aides and student leaders; implement rotating activity systems; monitor via admin walkthroughs.  <b>Attendance:</b> Assign monitoring to existing staff; review data monthly; use simple incentives.  <b>Wraparound:</b> Embed in SST/MTSS; cross-train staff; implement referral and tracking systems.</p>
<p><b>Family &amp; Community Engagement</b></p>	<p><b>Family Math Night:</b> 32 families attended (Mathnasium partnership).  <b>Showcase/Open House:</b> Annual event.  <b>Resource Fair:</b> Community partner participation.  <b>Workshops:</b> Educational sessions for families.  <b>Community Partnerships:</b> Various partnerships in place.</p>	<p><b>Math Night:</b> Host two events; increase attendance to 50 families.  <b>Showcase:</b> Expand to student-centered exhibition with interactive elements.  <b>Resource Fair:</b> Add direct service access (on-site sign-ups, follow-up).  <b>Workshops:</b> Create Family Learning Series aligned to family needs.  <b>Partnerships:</b> Focus on high-impact collaborations.</p>	<p><b>Events:</b> Staff-led planning; create reusable templates and timelines.  <b>Resource Fair:</b> Assign coordinator; implement follow-up system.  <b>Workshops:</b> Use staff/district facilitators; build digital resource library.  <b>Partnerships:</b> Formalize MOUs; assign liaisons; conduct annual reviews.</p>

<p><b>Collaborative Leadership</b></p>	<p><b>Principal–CSF Meetings:</b> Monthly (18 meetings).  <b>Parent Groups:</b> SSC, ELAC, PTA participation.  <b>Limited Student Voice:</b> Minimal student input in decision-making.</p>	<p>Embed CSF in leadership teams (ILT, PTA, SSC, ELAC). Increase parent participation through targeted outreach. Rebuild PTA as a parent-led organization. Launch Student Advisory Council (Grades 6–8).</p>	<p><b>Leadership:</b> Maintain consistent meeting structures; embed CSF role.  <b>Parent Engagement:</b> Use personalized outreach; provide flexible meeting options; build leadership pipeline.  <b>PTA:</b> Provide training, mentorship, and succession planning.  <b>Student Voice:</b> Assign staff advisor; integrate student input into decision-making.</p>
<p><b>Expanded &amp; Enriched Learning Opportunities</b></p>	<p><b>Playworks:</b> 325 students supported; campus attendants implement with minimal oversight.  <b>Enrichment:</b> Skateboarding activity and limited real-world learning opportunities. <b>After-School Clubs:</b> Limited offerings.  <b>Family Participation:</b> Primarily event-based.</p>	<p>Expand enrichment through structured, interest-based programs (e.g., skateboarding, clubs). Launch quarterly Career &amp; Community Exposure Days. Expand after-school programs using staff, partner, and student-led models. Introduce Family Enrichment Nights tied to learning themes.</p>	<p><b>Enrichment:</b> Build network of community partners; assign coordinator; plan annually.  <b>Career Exposure:</b> Standardize communication and scheduling.  <b>Clubs:</b> Integrate into existing after-school structures; build staff ownership.  <b>Family Engagement:</b> Expand existing events; reuse materials; build parent volunteer teams.</p>

**LCAP Alignment**

This work aligns with **LCAP Goal 2: Engage**, focusing on student well-being, attendance, family engagement, and equitable access to support.

**Strategic Community Partnerships**

We partner with organizations to provide:

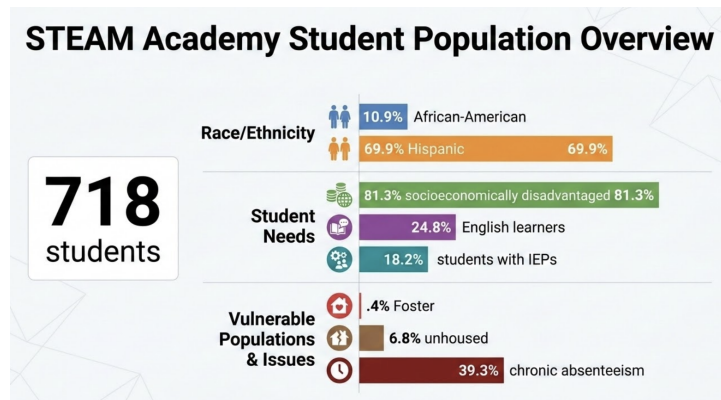
- Health and mental health services
- Educational and workforce opportunities
- Family and community engagement supports
- Food and basic needs resources
- School climate and enrichment program

## STEAM Academy - Principal: Andrea Radmilovich

### Goals and Priorities (2026–27)

**STEAM Academy** is entering year three of Community Schools implementation. Our focus is to continue building a whole-child community school model grounded in the four pillars: integrated student supports, family and community engagement, collaborative leadership, and expanded learning opportunities. This work will continue to grow and strengthen over the remaining years of the 5-year grant.

### School Overview



### Identified Needs

Families and students at **STEAM Academy** need increased support in the following areas:

- Social-emotional learning and student connectedness
- Access to health services (mental health, medical, dental, vision)
- School facilities and outdoor learning spaces
- Expanded after-school enrichment (arts, music, robotics, tutoring)
- Family support services (basic needs, ESL classes, and access to resources)

**STEAM Academy Community School Implementation & Sustainability Plan**

Community Schools Pillar	Current Activities (2025–26)	Proposed Activities (2026–27)	Sustainability Plan for Each Item
<p><b>Integrated Student Supports</b></p>	<p><b>Tutoring:</b> In-class and after-school support (8th grade math, homework club, ESS); 35–40 students served. <b>Attendance Incentives:</b> Weekly, monthly, and trimester competitions with student rewards. <b>Student Check-ins:</b> One-on-one support for referred students (currently 2 students).</p>	<p><b>Tutoring:</b> Add lunchtime homework/tutoring club to reach 10–15 additional students; create staff referral system. <b>Attendance:</b> Continue competitions with adjustments for 6-period schedule. <b>Check-ins:</b> Develop structured referral timeline, goal-setting tools, and tracking forms for staff use.</p>	<p><b>Tutoring:</b> Explore free partnerships (high schools, community orgs). <b>Attendance:</b> Allocate site funds; pursue grants and community donations. <b>Check-ins:</b> Implement shared systems; no additional funding needed.</p>
<p><b>Family &amp; Community Engagement</b></p>	<p><b>SMATH Night/Open House:</b> ~550 attendees. <b>Activity Nights:</b> Limited offerings (e.g., astronomy, art, talent show). <b>Roadrunner Roast:</b> 100+ parents attended.</p>	<p>Enhance SMATH Night with stronger staff collaboration. Establish consistent activity nights (talent show, astronomy, art). Continue Roadrunner Roast; add 6th-grade family dinner to build relationships.</p>	<p><b>Events:</b> Continue using site funds; explore grants and donations. Build and maintain partner relationships for activity nights. Allocate Community Schools funds (if available) for family engagement.</p>

<p><b>Collaborative Leadership</b></p>	<p><b>Principal–CSF Meetings:</b> Monthly (18 meetings).  <b>Family Leadership Groups:</b> ELAC, SSC, PTSA participation.  <b>CSF/SW/Principal Meetings:</b> Ongoing collaboration.  <b>Interdistrict Collaboration:</b> Engagement with GUHSD partners.</p>	<p>Expand site advisory teams; include teacher leads and increase parent leadership (10+ parents). Improve communication systems (shared board/tools). Strengthen collaboration with feeder schools to support student transitions and targeted cohorts.</p>	<p><b>Leadership:</b> Embed CSF in leadership structures (PTA, SSC, ELAC, ILT). Maintain consistent meeting structures; no additional funding needed. Build vertical alignment systems across schools for long-term support.</p>
<p><b>Expanded &amp; Enriched Learning Opportunities</b></p>	<p><b>After-School Clubs:</b> Limited availability.  <b>Lunch Activities:</b> Informal games (e.g., Jenga, Connect 4).  <b>Resource Access:</b> Community resources distributed across main office.</p>	<p>Establish trimester-based after-school clubs focused on college readiness, social skills, and student needs. Organize structured lunchtime games with rotating activities. Create a centralized, welcoming Community Resource Hub.</p>	<p><b>Clubs:</b> Develop curriculum and schedule; rotate student participation each trimester. <b>Lunch Activities:</b> Train campus attendants to facilitate structured play.  <b>Resource Hub:</b> Use CS funds (if available) for organization and materials; maintain system long-term.</p>

**LCAP Alignment**

This work aligns with **LCAP Goal 2: Engage**, focusing on student well-being, attendance, family engagement, and equitable access to support.

**Strategic Community Partnerships**

We partner with organizations to provide:

- Health and mental health services
- Educational and workforce opportunities
- Family and community engagement supports
- Food and basic needs resources
- School climate and enrichment program